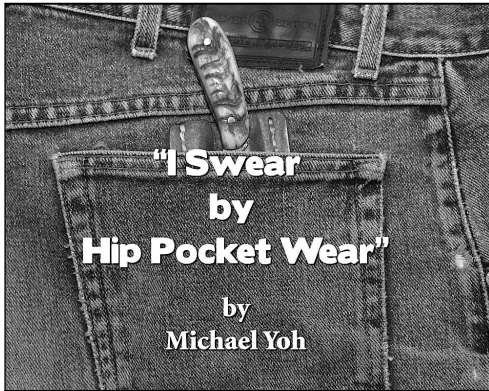




- ✓ Hip Pocket Wear
- ✓ Working Hunting Knife
- ✓ Remington Shield
- ✓ Bill Ruppel 2009 Club Knife
- ✓ Legislate Knives
- ✓ The Sunday Dress Knife
- ✓ Adding to the List
- ✓ They Said What?
- ✓ Application Form

Our international membership is happily involved with "Anything that goes 'cut'!"

October 2008



Fixed blade knives are extremely handy, especially short bladed, compact ones. I am firmly in the camp of those that think anything more than a 4" blade is overkill for most situations. I have a Ruana Smoke Jumper and wear it regularly when working outside or

just spending time in the woods. You couldn't ask for a better short-bladed "belt" knife. Short bladed, under 4", will cut nearly everything that a person needs to cut. However, what if you don't have a belt onto which to secure that sheath knife? Maybe you're wearing sweat pants, coveralls or another beltless outfit. Or what if a knife on your belt is a bit too obvious in this politically correct world? Do you grab your folding knife with clip or your neck knife? Though both of these are viable options, I think there is an even better option.

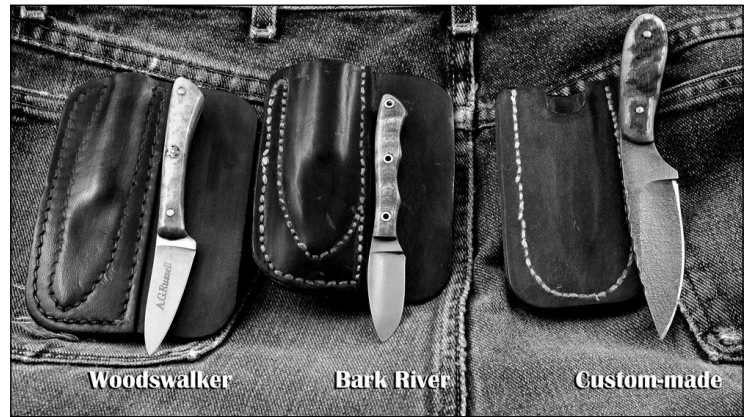
Consider the hip pocket sheath knife. Perhaps A. G. Russell didn't invent the hip pocket sheath knife; but with his Woodswalker, I think he perfected it for the average Joe. It is a simple and inexpensive knife with an 2-1/2" blade and hardwood handle. It is a thin, flexible blade that slices, whittles, skins small critters and does camp kitchen chores very well. I believe his catalog still lists it at \$19.95 with leather hip sheath. What sets the Woodswalker apart, though, is the squared-off leather sheath, roughly the shape and dimensions of a hip pocket. I purchased one of these several years ago and found it very convenient to slip into my



jean's back pocket. My outdoor companions admired this slick setup, and I ordered several as presents for them. Occasionally, I may see a custom knife fitted to a hip pocket sheath, but not all that frequently.

I've also heard this type of sheath called the "wallet sheath." Horsewright Clothing & Tack Co. offers a wallet sheath very much like the one for the Woodswalker for \$45.00 and is designed to hold small short-bladed knives. Of course, if you are at all handy with leather working, making one is a cinch (pun).

The knife on the left is my A.G. Russell Woodswalker. Though the hardwood handle that comes with the knife is very nice, I have a bad



habit of not leaving things well enough alone, especially knives. I liked the knife so much that I decided it needed a custom handle to add that personal touch. I had an old straight razor with white aged bone handles. I replaced the hardwood handles with the bone and added my trademark homemade mosaic pin for accent. A.G., maybe you should start offering your Woodswalker with custom handles.

Not too long ago I bought a Bark River Mikro II Canadian knife with a 1-3/4" blade, full tang and made with 12c27 Sandvik steel. I am very impressed with the steel and edge-holding ability of this little knife. The blade is shorter and much thicker than the Woodswalker, but holds a razor sharp edge. The one negative feature about this knife in my opinion was the dangle type, pouch sheath. I decided it needed a sheath like the hip pocket Woodswalker sheath and set about making one using the Woodswalker sheath as a pattern. Wah la, another perfect hip pocket outfit. In fact, this one slips completely into the rear pocket and is virtually unnoticeable, but still ready for action.

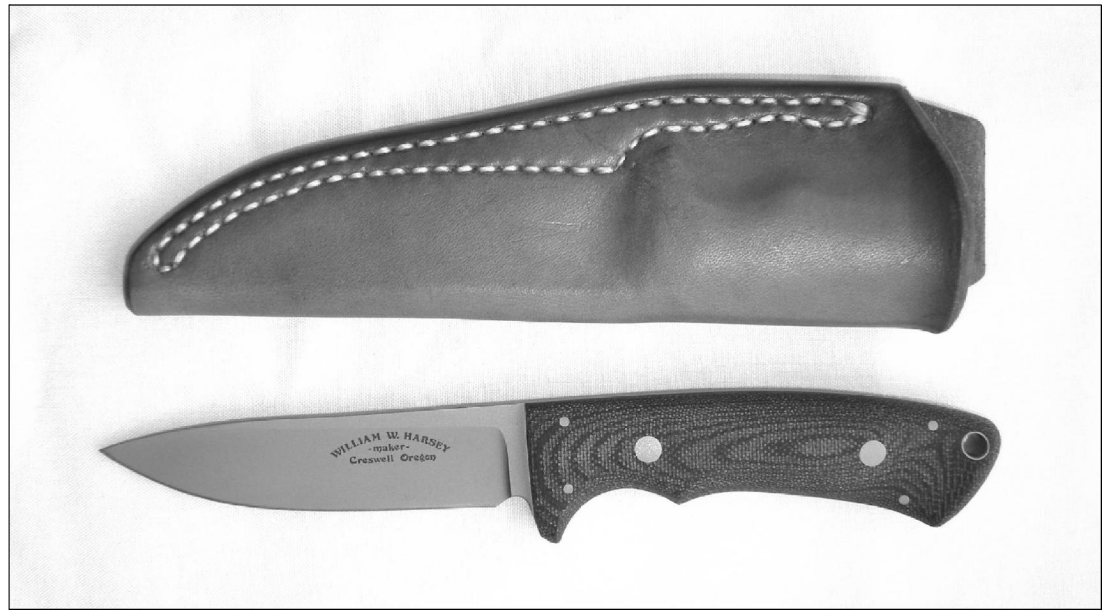
At my local knife club annual show recently, I saw some interesting blade blanks that a local blade maker had cut out of old truck springs. I picked up one of these small 3-1/2" blades, did a bit of reshaping and finishing and applied sheep horn handles to it. As most of you are aware, transforming a curled sheep horn into a flat slab is not an easy chore; and my wife particularly is not thrilled with the smell of heating the horn in the oven to flatten it. But, I digress. I also added some file work along the top of the blade. The knife turned out very well with

Continued on next page.

Searching For the Elusive "Working Hunting Knife"

By Wayne Goddard

There is no question about it, things change in the knife world. There was a time that the demand was primarily for hunting knives. Nineteen-seventy-two found Phyllis and me at the Knifemakers' Guild Show in Kansas City. It was in conjunction with the Missouri Valley Arms Collectors Gun Show. It was the third gathering of the Guild, and the first time they had a separate room. A small percentage of makers had folding knives and scattered around the room were a few Bowie knives. In addition, the occasional fighting knife or boot knife was found. At that time, the "tactical" knife had not been invented; discovered may be a better word. For the most part, it was a hunting knife world.



While looking through the knife magazines today and walking the aisles at knife shows, it seems to me that it could almost be a contest to see how much stuff can be added to a knife. My point is that too many new makers are overly influenced by the make-believe knives they see everywhere. They follow the latest fad with little or no knowledge of how or why knives work. There is little appreciation or understanding of the simple working knife; it is no wonder that they are hard to find.

It is not that those who want to add weight and embellishment to a knife should not do it. Adding stuff to a knife in the name of art is legitimate as long as there are folks that appreciate it and purchase it. At the same time, they should also be aware that simplicity is not a bad thing. The best design of any tool is achieved when everything that is not essential is stripped away.

I will define a simple working hunting knife as follows: 4" blade, close to a blade width of 1", not very thick (1/8" to 5/32"), simple slab handles, no decoration. I was able to defend the 4" blade length in a conversation I had with a potential customer who was extolling the virtue of blade lengths in the 3-3 1/2" size range. I will agree with him that a knife that size can be used to dress and skin a game animal. However, I will ask what if the buck deer or bull elk ran to the bottom of a canyon before going down? In this case, a 4" blade will be more suitable to cut the animal up for packing back to camp. Or, to do as

some, cut the bones out of the meat and pack out only the edible parts. Another possibility is that a hunter could find himself or herself hurt, lost or trapped by a sudden snowstorm. A 3" blade won't do, a 4" blade will be more useful to help get a fire going; and that will usually mean the difference between survival or not.

I did a quickie survey of the December 2008 *BLADE* Magazine to see what I could find in the hunting knife category. Up to page 54 (half way through the issue), it was slim pickings. I found only five working knives that fit my definition. Page 67 was a pleasant surprise with an ad for working knives, Jim Kelly, www.workingknives.com. Things looked up as I got to the *BLADE* SHOPPE advertising section where I found more working hunting knives. I then looked at the most recent 24-months of *BLADE* covers, only one issue with a working hunting knife on the cover.

At the recent *BLADE* Show West, I went through the show looking for simple working knives, and I was not finding many. I ran into Bill Harsey Jr. and explained my quest, and the shortage of results. He dug in his pack and pulled out a knife he had just finished for an order. It fit my specifications perfectly so I got a picture of it and here it is.

If you are a maker suffering from slow sales you might make it a rule to keep some simple working knives in your inventory.



Hip Pocket... (continued from page 1.)

great balance, a good fit for the hand and capable of taking a decent edge. This knife just screamed out to me, "I belong in a hip pocket sheath." The one I made for this knife is a variation of the previous two. I left the entire handle exposed, as the handle turned out so well.

My present dilemma is which of the three knives do I carry? I try to give them equal time. If you haven't tried carrying a knife in a hip pocket sheath, give one a try. The knife is unobtrusive, unlike a belt knife; as it is completely tucked out of sight in your hip pocket. Hip pocket carry is also very secure; mine has never had a tendency to creep out of my pocket, even after a long day of wearing it while driving, sitting, etc. It can come into play very quickly, as it is as easy to retrieve as your wallet. I am a faculty member at a university and in

today's environment wouldn't think of wearing a sheath knife openly on a belt around campus. However, I don't hesitate to stick the Mikro II Canadian in my rear pocket (it's only a 2" blade) where it nestles out of sight and is very accessible if I'm cutting cartons, trimming foam board, etc. Though I'm straying from my original theme, you can also tuck this knife/sheath combination in your shirt pocket or coat pocket where it rides securely, while extremely accessible.

This type of carry may not be everyone's cup of tea; but for a knife enthusiast, preferring a fixed blade, wearing his chinos or jeans while out and about, whether in town or country, a hip pocket sheath is a pretty ideal solution.



OKCA Knews and Musings

ibdennis

2009 Club Knife.....

I was especially pleased at the last Show to strike a deal with **Bill Ruple** to make the 2009 Club knife. We have been preparing for this during the summer and had agreed on a pattern. In the process of talking about a prototype and the blades we would like, our first choice was impossible. The second choice, a trapper pattern, has been decided. The description is on the application form. If you have ever tried to purchase a **Bill Ruple** knife, you will undoubtedly be aware that his knives are in short supply and very difficult to find. This indeed is a wonderful opportunity for both those that purchase the knife and also the OKCA for this fund raising project. Due to the limited number of knives available, payment will be required at the time of the order. An application form is included in this *Knewsletter*.

The interesting part of this project is having two blades. We have never had a handmade knife with two blades. The clip blade will be the master blade and the second a spey blade. The photo enclosed is similar to the knife we will have.

Problems at the Last Show.....

At our last April Show we had an episode that was extremely troublesome. Our rules state "no sharing of tables." This is hard to monitor and has not been enforced. For the last few years we have had some tableholders that had Show badges made for a friend that supposedly was "helping" with the table. These friends are sometimes not members of our organization, and I see it as slipping into the Show to save a buck on membership.

In one situation a "friend" had a tableholder's badge and used that badge to promote a sale. That sale resulted in a claim of fraud, and there is an ensuing legal action. We, the OKCA, are not involved in this; but we will monitor Show badges even more tightly now. We do not want to become involved in any questionable transactions and want to divorce ourselves from any potential legal issues. We believe the tableholder should be held responsible for the transactions at their table but do not believe we should be the police and judge in these matters. I feel like the Dutch boy trying to put his finger in the dike to stop a leak.

Get your table requests in now.....

The deadline for table requests is December 15, if you want the same table as at the 2008

Show. And for that matter if you want a table at all. Look at the address label on this *Knewsletter* and note whether it says 2008 or 2009. If 2008 it may indicate you have not paid for tables, much less your membership. Help support your organization as we are trying hard to make it the best in the world. Encourage a friend to join as joining now makes the membership good for 2008 and 2009. Such a deal.

Displays at the 2009 Show.....

I think I have it figured out how we can handle a huge display collection and still have room for all the displays we usually have. This juggling act is tough sometimes.

The Contributors to the Knewsletter...

I want to thank those that write for our *Knewsletter*. I have always believed that this is the glue that keeps us together. Thank you for the help in this issue to **Ron Bucher, Ron Edwards, Wayne Goddard, Mike Silvey, Merle Spencer and Michael Yoh**. We need articles for future issues of the *Knewsletter*. I do not want to see this *Knewsletter* drift into a two page monthly sheet of words. I have several of my articles that can fill in, but I would much prefer writings from the general membership. Pleeze, big time help.

See you at the Sizzler on October 15th.....

Our meetings are a fun part of our organization and are always an educational and entertaining experience. And do not forget about the Show-N-Tell part of the meeting.

OKCA Web Page....

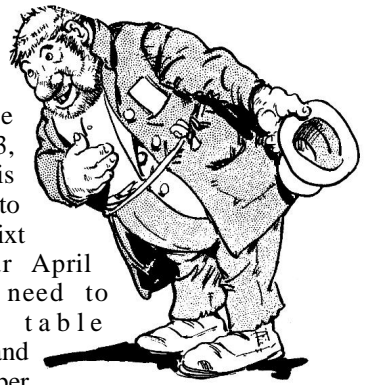
The Oregon Knife Collectors web page might be our best kept secret. The site is very up to date and has a wealth of information. It was designed for easy viewing and easy access to information. I have yet to see any gapping holes on the site for our organization. We have links galore but only for our membership, and no commercial links unless they are members of our group. If you do a Google search on OKCA, we pop up first. Of course we can be found at www.oregonknifeclub.org too.

Adverts in our Knewsletter...

We want to remind you that our advertising is free to members, and we try to post most of these on our web site also. It is yet another perk for being a member in our organization.

Mini Show (AKA Winter Show)

w i l l b e
December 13,
Saturday. This
is a free show to
fill the gap twixt
now and our April
Show. You need to
request a table
reservation, and
the rule is one per
member (not to forget about
your spouse who may be a member also). We
have a limited number of tables (100), and we
are usually at the top of the bucket by
showtime. If you reserve a table and DO NOT
Show UP, you might be sent a bill for the table.
We have to pay for them. Also if you commit
to a table, we will send you a bill for the table if
you leave early.



The room at the Lane Events Center will open at 7 am and the Show will continue until 4 pm. The public is allowed in at 8 am. Tables are catch as catch can. First there, first choice. All spots are good though. This year we will discontinue the social which followed the Show. The work and effort that goes into this is pretty intense, and we have run out of the oomph to make it happen. If there is a hue and cry, we will reconsider it for 2009.

Places to stay in Eugene

Get your lodging reservations in soon or you might have to bring your tent. We have worked out special rates for the Knife Show so take advantage of the suggested below. These facilities are mainly for the April Show; but if you desire rooms for the December Mini Show, contact the Courtesy Inn or the Hampton for special rates.

The Valley River Inn -(800)543-8266 -(541)687-0123 -Our top recommendation. Fills up fast. A quality place to stay. Official home for folks away from home visiting the Oregon Knife Show. Special Show rates if you mention the OKCA Show.

Courtesy Inn -(888)259-8481 -(541)345-3391 -The closest motel yet to the Knife Show. A budget motel and special rates to boot if you mention the Knife Show.

Hampton Inn - (541)431-1225 - My personal favorite when on the road in other cities. Mention the Oregon Knife Show for a very special rate. You must call this location for that rate.

The Campbell House -A City Inn -(800)264-2519 -(541)343-1119 -Classic Hospitality.

Remington's Gene Pool to Eugene ibdennis

In the 1920s Remington introduced the six bladed R3843 camp or utility knife. This knife was often referred to as part of the bullet series. On the standard bullet series, there was a profile of the bullet, but this R3843 shield was referred to as the base of the bullet. The bullet was taken from the 30 Remington cartridge.



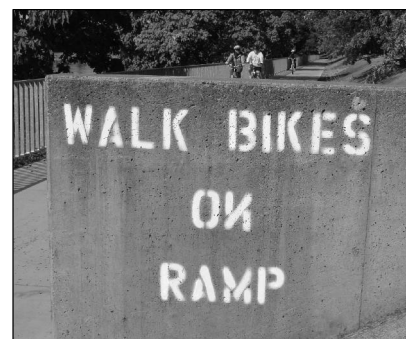
Now six degrees of separation refers to the idea that, if a person is one step away from each person they know, and two steps away from each person who is known by one of the people they know, then everyone is an average of six "steps" away from each person on earth. The resulting theory is that of "Six Degrees of Separation"—the notion that anyone can form a chain of personal contacts leading to any other person, with no more than six links in the chain.

So what do these two thoughts have to do about knives, you might ask? The shield, medallion or base of the bullet on the R3843 knife has a slight problem. Many of these shields had an "oops" in the letter "N." Because it was not obvious, it is possible there might have been a hundred bazillion of these shields that got into the marketplace. Whoever the person was that perpetrated this "oops" has to have a genetic relative that now lives in Eugene, Oregon.

I have ridden the bike trail in Eugene for many years and right next to the Valley River Inn is a series of steps that lead from the parking area to the bike trail; and as a caution, a sign was painted on the wall to warn bike riders not to ride the ramp. Or more succinctly to "Walk Bikes On Ramp." It seems obvious to me that if I were to start a quest as to the sign painter in Eugene and were to trigger the "six degrees of separation theory" then it should lead back to the person at Remington that popped the backwards "N" on the shield of the R3843 knife.



Now the Valley River Inn is the partner we have for our visitors who come to the April Knife Show in Eugene, Oregon. I should think that if the Remington collectors started talking to the employees at the Valley River Inn and start the ball rolling, then we would know who it was that did the bike ramp thing and who it was that did the Remington thing. Better yet it might be fashionable when you visit Eugene to have your picture taken at the bike ramp with a specimen of the R3843 knife. Just like standing in front of the Washington monument.



Oregon Knife Collectors' 2009 Club Knife

This year we are offering a Bill Ruple handmade folding pocketknife for members of the OKCA. This knife will be a Trapper pattern. It will be the first-ever OKCA custom Club knife that is a two blade pattern. The main blade will be a clip point, and the second will be a spey blade. It will have a double bolster and handles of jigged bone.

Bill Ruple knives are highly sought after, and this is a special opportunity for our Club which has been honored by Bill Ruple. There has already been considerable interest in this offering, and several persons have committed to purchase this knife.

This limited edition of 25 knives will be serial numbered, year dated and marked as Oregon Knife Collectors' knives. These knives are only available to Oregon Knife Club members.

Delivery will be at the April 2009 Oregon Show.

This is a fund raising project for the OKCA so help out and also make an investment in what will soon be a very desirable knife to own. These knives will go fast so don't delay.

The price on this limited edition knife is \$750. Payment will be expected at the time of order.



Knifemaker - Bill Ruple

Photo - Johnny Stout

Name _____

Address _____

City _____ State _____ Zip _____

Bill Ruple knife _____ quantity.

Total amount enclosed _____

Please add \$20 for shipping if you will not be able to pick up this knife at the Show on April 18-19, 2009.



The Seek-re-tary Report

by elayne

The first meeting of the new Show year was held September 17. There were 26 present. It was a very low key meeting, just starting to ramp up for the pointed hysteria that will come.

The Club knife project has been in the works since the April 2008 Show. Bill Ruple, Pleasanton TX, will provide our 2009 knife. There is a photo and an order form in this *Knewsletter*. Due to the limited quantities which will be available, payment will be required at the time of order.

Please note the expiration date on the address portion of your *Knewsletter*. If it reads 2008, your membership will expire on December 31, 2008. You will need to renew if you wish to have free admission to the 2009 Show. It is also a good bet you have not paid for your tables for the 2009 Show. You must be a current 2009 member to have a table at the 2009 Show. The deadline for your same 2008 table at the 2009 Show is December 15, 2008.

The December show will be December 13, 2008. If you want a table, please email or phone your reservation. The Club is charged for every table reserved, even if you do not attend. The costs for the December show have become a matter of concern for the Board, and we are attempting to minimize them as much as possible. Please assist us to this end. If you reserve a table and do not cancel, we are charged for that table. We will only order the exact number of tables that have been reserved. We have cancelled the potluck social which follows the December show. It has always been a fun time; but it does make for a long day, especially at such a busy time of the year.

The Show badges have always been a challenge for me. We have stated that only two badges are issued per tableholder (unless the tableholder has youngster helpers), this limits the number of people who are behind each table. However each year, on the day of the Show, we always have a queue to get a tableholder badge. This means tight quarters for tableholders. We offer free admission to the Show to all members of our OKCA group. We are an exception. Many groups only allow tableholders during certain hours, no members; and others do not offer any consideration for free admission to their membership. This year, unless you have had a last minute change, we will not issue additional tableholder badges on the day of the Show. Membership will be available for purchase at 2:00pm on Friday of the Show. No current membership (2009), no entry until 2:00pm.



It is never too early to forward to us the Ford Swauger damascus display award knife you are enhancing. We will be able to include photos of it in the *Knewsletter* and on the web site when it is received. The competitors of the 2008 blade grinding competition are completing the blades for the 2009 awards. They are the following: Bruce Bump (Walla Walla WA), Jose Elzinga-Diaz (Ellensburg WA), Ray Ennis, (Ogden UT), Chris Guenther (Beaverton OR), Tedd Harris (Hillsboro OR), Todd Kopp (Apache Junction AZ), Gene Martin (Williams OR), Jerry McClure (Norman OK), Lynn Moore (Fall Creek OR), Spencer Reiter (Deridder LA), Butch Vallotton (Oakland OR) and Richard Veatch (Oakridge OR). Thank you for your contribution to our 2008 Show, and the contribution you will make to our 2009 Show.

The next meeting will be at the Sizzler Restaurant, Gateway, Eugene/Springfield OR, October 15. Dinner 6:00PM and meeting 7:00PM. See you there.



I Carry a Knife Daily.

Ron Edwards

I always have one with me; wallet, keys and the trusty knife.

Can you just imagine how a person could get through an average day without bringing out the old blade to perform some task? This task doesn't have to be a big deal thing, just something that needs a little attention. The fact you have your knife, do the job, and get on with your daily life, confirms this fact.

The knife is an important tool, yes, I said tool. As defined in Webster's book, "an instrument for achieving any purpose."

We are lucky to have this little knife with us on a daily basis, to do the job it has been designed to do; to do it well with very little expense and certainly, little inconvenience.

There is a group, there always is, who would like to see this knife removed from a person's possession. Here's a suggestion they have come up with that would help sum up how silly their position is. Go to a bank or a place of security, (they have not figured that out yet) pay a fee, get your knife, cut your thread or your other task at hand, return



your trusty old blade to its place of safe keeping. You will be required to get help for this as you cannot be trusted to do this on your own.

This hare brained idea is just one example that could certainly pose a bit of a hassle for the hunter or fisherman, because after paying a healthy fee for their permit, their clothing and related items, they just want a knife to help finish their day in the field or on the water. A day they have dearly paid for and richly deserve.

Can you just imagine trying to get the evening meal going without this lowly tool?

This group of well meaning people, this group of scared people, who want to save us from ourselves, just haven't figured out how to word their story, to put a fit on all the things that would come up.

Support those who represent your right to carry and use this very important tool of our daily lives. You don't have to spend your day on the subject, just be aware of the problem. The other side will be working hard on their beliefs as that is their JOB.

Sincerely,
Ron Edwards, Proud member of many organizations and life in general.





OREGON KNIFE COLLECTORS ASSOCIATION

BOX 2091 • EUGENE, OR 97402

MEMBERSHIP APPLICATION AND SHOW TABLE CONTRACT

PLEASE RETURN THIS ENTIRE PAGE or a photocopy. DO NOT CUT IT UP!

Name(s) _____

Mailing Address _____

City _____ State _____ Zip _____

Phone: Eve (_____) _____ Day (_____) _____ Date _____

Collector Knifemaker Dealer Mfr./Distrib. Other _____ Email _____

OKCA membership includes newsletter, dinner/swap meetings, free admission to OKCA shows,

FREE OKCA December Mini show tables, right to buy OKCA club knife.

__ Start/ __ Renew my/our OKCA membership (\$20 individual/\$23 family) \$ _____

34TH ANNUAL OREGON KNIFE SHOW • APRIL 18-19, 2009

430 — 8'x30" TABLES

Exhibit Hall, Lane Events Center and Fairgrounds, 796 West 13th Ave., Eugene, Oregon.

For Information Contact Show Chairman: Dennis Ellingsen, (541) 484-5564

AUTOMATIC RESERVATIONS: If you had a table at the 2008 Show, you have an automatic reservation for the same table in 2009, but THIS RESERVATION EXPIRES DECEMBER 15, 2008. You may still apply for a table after this date, but we cannot guarantee a table after December 15. NO RESERVATIONS HONORED OR APPLICATIONS ACCEPTED WITHOUT FULL PAYMENT! Note to NEW exhibitors: your table(s) will be assigned after 12/15/08.

ALL TABLE HOLDERS AND VISITORS agree to abide by the OKCA show rules, and to hold the OKCA, its officers, and the Lane Events Center harmless for any accident, loss, damage, theft, or injury.

ANY QUESTION OR DISPUTE arising during the show shall be resolved by the Show Chairman, whose decision shall be final.

THIS IS A KNIFE SHOW. All tables must be 90% knives or knife related items (e.g. swords, axes, edged tools, edged weapons, knife books, knifemaking supplies). If in doubt, check with the Show Chairman ahead of time. The OKCA reserves the right to bar any item from display or sale. No firearms made after 1898 may be sold or shown at this show.

ALL EXHIBITORS are required to keep their tables set up throughout the public hours of the Show: 8 AM Saturday to 3 PM Sunday. ANY EXHIBITOR WHO LEAVES OR COVERS THEIR TABLE BEFORE 3 PM SUNDAY FORFEITS HIS FUTURE RESERVATIONS AND WILL BE DENIED TABLES AT FUTURE OREGON KNIFE SHOWS.

DISPLAY TABLES will be around the perimeter of the room. All displays are eligible for display awards, which are handmade knives donated by members and supporters of OKCA. Display judging will be by rules established by OKCA. Special category awards may also be offered. **NOTHING MAY BE SOLD FROM DISPLAY TABLES.**

SALE/TRADE TABLES Sharing of tables will not be allowed. Exhibitors must comply with all applicable local, state, and federal laws. Oregon has NO SALES TAX.

BADGES: Each table holder is entitled to one additional show badge. **NO EXCEPTIONS.**

KNIFEMAKERS who are present and are table holders at this show may enter knives in the knifemaking award competition.

FOR MORE INFORMATION on categories and judging criteria in the display and handmade knife competitions, contact the Show Chairman.

SHOW FACILITATORS will be provided by OKCA from 10AM Friday until 4 PM Sunday. However, exhibitors are responsible for watching their own tables. Neither the OKCA nor the Lane Events Center will be responsible for any loss, theft, damage, or injury of any kind.

CITY AND COUNTY REGULATIONS require that there be:

- No Smoking within the Exhibit Hall at any time;
- No alcoholic beverages consumed within the Exhibit Hall during the public hours of the show;
- No loaded firearms worn or displayed at the show;
- No swords or knives brandished or displayed in a provocative manner.

Violators of these safety rules will be asked to leave.

NOTE ON SWITCHBLADES AND DAGGERS: In Oregon it is legal to make, sell, buy, or own switchblade knives. However, it is **ILLEGAL** to carry a switchblade knife, a gravity knife, a dagger, or a dirk concealed on one's person, or for a convicted felon to possess a switchblade or gravity knife. Most other states have banned switchblade knives. Under federal law, it is **ILLEGAL** to mail, carry, or ship a switchblade or gravity knife across state lines.

SHOW SCHEDULE

Friday, April 17, 2009.

10am - 7pm set-up; open ONLY to table-holders and members of OKCA.

Saturday, April 18, 2009.

7am-8am set-up. 8am-5pm open to public.

Sunday, April 19, 2009.

8am-9am set-up. 9am-3pm open to public.

Tables that are cancelled will revert back to the OKCA. Subcontracting tables is not permitted.

EXHIBITOR CONTRACT: PLEASE ENCLOSE FULL PAYMENT WITH THIS FORM. Full refund granted if reservation canceled by February 15, 2009. **DON'T GET LEFT OUT!!! MAIL THIS PAGE AND YOUR CHECK TODAY. A signature is required.**

Type of knives on your tables _____

Name for second badge _____ (two badges per table holder)

NO EXCEPTIONS

Qty _____ Club Dues (Total from above) \$ _____

Qty _____ Sale/Trade table(s) @ \$95 each (members only) \$ _____

Qty _____ Collector Display table(s) free with sale table:

Qty _____ Saturday Night Social Tickets \$5.00 each \$ _____

TOTAL ENCLOSED (make check payable to O.K.C.A.) \$ _____

I have read and agree to abide by the OKCA show rules as set forth in this contract, and to hold the OKCA, its officers, and the Lane Events Center harmless for any accident, damage, loss, theft, or injury. **Signature and date required.**

Signature _____ Date _____

*** PLEASE RETURN THIS ENTIRE PAGE or a photocopy. DO NOT CUT IT UP!***

www.oregonknifeclub.org

They Said What?

I have collected words from the Internet and eBay on the subject of knives. I am not the only one it appears to do this. This collection is from Ron Bucher of Lancaster PA.

Overall condition is acceptable for its age...

The 3 blade knife with the handle coming loose is a 4 blade but has one blade missing.

I can find no maker marks on the knife but believe it's from the early 1900s.

The hand-worn patina and look and feel of the ridges of the horn and the blade of this knife are wonderful and come only from the oil of the owner's hands

the guy that had them passed away when he was 81 and he had them when he was younger.

and sports Shadow Nickel Silver Bolsters

PLEASE BID HIGH AND BID OFTEN !!

This type knife is listed in Lords Books on Cibil War collectables

We guarantee that this little guy has certain age to it.

Campruddy

Hibbart Speece Bartles & Company

Swatt Works Ohlgs

Gamilcos

Cocamillus Cutlery

Rotmaster -Utica NY

SANDBAR GRIPS

An excellent item to frame and add to civil war collectibles, '49er's collectibles or any other old period collectibles. WE DO NOT KNOW IT'S TRUE AGE.

This is a lot of 3 knives, each marked KA-BAR on the blade. The one on the left is marked "Challenger Bridgeport, Conn." Top right is unmarked. Bottom is marked "Roberson Cutlery USA".

Challenger

Roberson

Anglo Sexton Whittler

Olster

Qween City

Case XX Halkbill

PAIRMOUNT CUTLERY

Ulsilk Knife Co., NY

Cattarcucus

U.S. Military Pocket Cutlery - Adding to the List Mike Silvey

As collectors of U.S. military pocketknives, we're always on the look out for new specimens to add to the list of recognized knives. Over the years we've picked up a few that can readily be included and others that cause us to wonder.

•Figure 1 shows a four-blade folder. We've probably seen three of these over many years of collecting and always wondered for what purpose and for whom they were made. The oval shield is clearly marked "U.S." in typical military fashion. The knife follows the standard engineer's pattern well, except for the sheepfoot main blade, which is marked, "KA-BAR/U.S.". None of the other blades are marked. The bolsters, bail and oval shield are nickel silver and the liners are brass. This knife certainly looks like it has a military connection, but what specifically was it?



Fig. 1

•Figure 2; we have never come across another knife like this one. It nearly fits the standard military engineer's pattern and configuration but is about 1/8" longer overall in the closed position. The bolsters, bail and shield are nickel silver, while the liners are brass. Interestingly, the shield is marked "U.S. ARMY". The tang of the main blade is marked "CROWN/CUTLERY Co/NEW YORK USA". The other blades are not marked. Goins, in his *Encyclopedia of Cutlery Markings*, says that this mark existed between 1900 and 1930. This, of course, places the knife prior to WWII when we first notice the advent and use of the engineer's knife pattern in the military. Was this just a commercial knife, an adaptation of the scout pattern and the "U.S. ARMY" stamp a marketing gimmick? Was it marketed to soldiers? Where does it fit in?

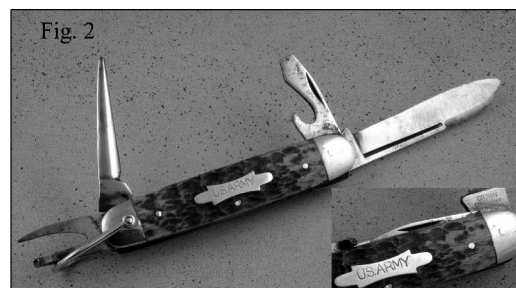


Fig. 2

•Figure 3 displays a knife of unique design. Over the years, we've seen two of these knives. One was marked, "Property of the U.S. Govt." and the other is completely unmarked. The knife is well made, and the blades of carbon steel are nicely ground and finished. The brass center liner is quite thick and has been grooved to accept the end of the bent tool when it is in the closed position. The main blade has a sharpened edge, but the tip is rounded and unsharpened. The heavy screwdriver has a wire stripper cut out. There is also a small screwdriver. Overall the knife is 3-5/16" long and about 11/16" thick. What was the purpose of this knife and its tools?

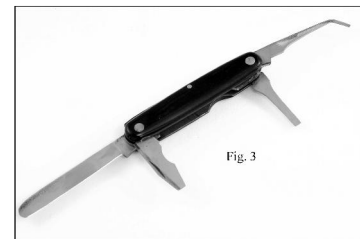


Fig. 3

m.silvey@comcast.net for comments.

The Dress-Up and the Workday Handles

Merle Spencer

I purchased a beautiful semi-skinner. Already hardened and polished, stick-tang blade at the Oregon Show some eight to ten years ago. The price even then was more than the \$25 to \$40 I had previously paid for hardened blades. But the shape of the blade, with its polished rounded spine and short two-inch tang, brought forth my desire to complete a nice knife using this blade.

I don't remember the person's name from whom I bought it, nor the type of steel from which it was forged; but I do remember the fellow's wife saying she would certainly like to see the finished knife.

Well, you know how it goes. I complete knives as a hobby, and with all the other hobbies I enjoy, sometimes it takes me two years to complete a knife. (See "The Three-day Two-man Knife", Feb. 2008); and then it may go to a friend instead of to my display case. Now that I've entered my early eighties (ninth decade, as it were), I seem to spend even less time on knives. However, I have no intention of disposing of my tools and equipment.

So... the blade got stuck in the box with all the other blades I couldn't resist over the years – not forgotten, because I would take it out and look at it from time to time and think about what would be appropriate for this special blade.



More than a quarter century ago I decided to be a Colt Single Action Army Revolver collector. (This was before I found out I wasn't in that income bracket.) A couple of my Colt's had fancy grips. One of my favorites was fitted with pearl grips. I had retained the old black rubber rearing colt emblem grips for originality purposes. This worked, too, because one could sell the piece with the black grips and later sell the fancy grips and come out the winner even after years of enjoying the revolver.

I sometimes took the fancy grips off and put the original ones back on before I headed for the old quarry with my latest cartridge loads. My wife would say, "Put 'em all in one ragged hole, Spence." I tried.

What does all this have to do with knife handles? Stay with me...

In old west pictures from more than a hundred years ago, one sometimes sees a cowboy wearing a revolver with pearl or ivory grips. Doesn't it stand to reason that the owner might want to save the nice grips for dress and wear the others for everyday chores? I have a



Stoeger Shooter's Bible which I purchased in 1958 that lists pearl or ivory grips for \$18.00 and stag for \$8.50, so less than a lifetime earlier the cowboy would undoubtedly be spending maybe half a month's pay for these showy adornments.

While wondering what to do for a handle on my good-looking blade, I thought, "Why not a dress handle and a work handle?"

So that is what I am doing.

I drilled a hole in a three-inch piece of quarter-inch threaded rod near one end and then sawed a short notch across the hole and attached the rod to the short tang with a small push-fit pin. As all my knife projects have been, this is starting as an experiment. The rod gives length enough for a handle and a hinge, if one wants one handle to be straight and the other one dropped. An acorn, nut or a threaded butt cap, will hold the handle parts together.

The possibilities here are endless. Can't you feel the excitement as you picture a dress handle with stacks of either washers or chunks of exotic materials—pearl, ivory, jade, amber—separated by washers of nickel silver, brass, fancy wood or...? How would one decide whether to use nickel silver or brass or bone or something else for the guard and the butt cap? If the tapered parts were similar in the front and the back, couldn't one reverse all or part of the handle each time it was assembled? I still need to decide on the straight or dropped configuration.

Now for the working handle.

Boy! I'm going to have to be careful here to keep this one dulled down so it doesn't outshine the dress handle. The simplest way would be to just stick on a piece of hollowed out wood or antler and polish it all up, however I already know I won't. Perhaps a brass guard would do with a combination of some stabilized dark wood and stag or water buffalo horn that is really usable and still has that good look we all strive for.

Gosh, now that I've got this far, why not three or four different handles, or a different handle for each day of the week? Let's see, is Tuesday the bone, redwood, brass and stag or the buckeye, stainless, leather and turquoise....?

Perhaps I can come up with another treatise in a few months on how progress is progressing.



OKCA Free Classified Ads

Free classified ads will run up to three issues and then be dropped. Available only to paid members. Write your ad on anything you have handy (except gold bifurcated velum) and email or snail mail to the **OKCA, PO Box 2091, Eugene OR 97402**. The number and size of ads submitted by a single member will be accepted, or excepted, dependent on available space and the mood of the editors.

WANTED: Clarence "Pete" Heath knife/knives. Articles, brochures, catalogs, letters and other Heath memorabilia also wanted. Jake Jakus S35 W33193 Honeysuckle Ct Dousman WI 53118 (414)331-1151

WANTED: 1962 U.S. Camillus MIL-K stainless steel utility knife. Rich Jones (503)956-5790 or rjshalom@verizon.net

WANTED: OKCA Club knives serial numbered "16." Need 1992 Gerber FS1—1989 Cripple Creek---1987 Al Mar Tanto—1983 Gerber Paul—1981 Gerber Gentleman Jack LST--will give \$100.00 for any 1980 Club Silver Knight. Fred Coleman (541)688-3624. Leave message.

Limited edition sprint run of Junior Goddard Clipits. White Micarta handles, partially serrated blade. This is variation #13 in the Spyderco/Goddard Clipits. \$150. each, free shipping if you mention OKCA Knewsletter. Goddards, 473 Durham Ave. Eugene, OR, 97404 541-689-8098 e-mail wgdoddard44@comcast.net

Grinding Machine -2 x 72 BladeMaster. Similar to Burr King. Comes with a small wheel attachment, 8" contact wheel, and flat platen assy. Has a 1-hp Baldor motor with three speed pulley system and a floor stand. This is a great machine that is in excellent condition. \$1000. Pick-up only. Gene Dietzen, (360) 834-9230, Camas, WA.

Collecting & dealing in investment quality 19th C. edged weapons & knives since 1981. I currently collect, buy, sell & trade fine antique 19th C. Sheffield folding dirks, folding Bowies, switchblades & pocketknives. I also authenticate, appraise, broker & take consignments for quality antique Sheffield & American Bowies. 20+ year member of the Antique Bowie Knife Association. Dave Lennon, experienced1@sbcglobal.net (707) 435-9550 Northern California.

Wanted: 1997, 1998, 1999 and 2000 OKCA medallions. Heceta Lighthouse, Oregon Beaver, Multnomah Falls and Mt. Hood. Call Jim (562)716-9857 or email:jipitt306@earthlink.net.

For Sale blade blanks, mosaic pins and lanyard tubes, stabilized wood. Gene and Sally Martin. bladesmith@customknife.com, www.customknife.com, (541)846-6755

USEFUL BLADE BOOK REFERENCES -Custom knives, collectible knives and other blades, military blades, swords, tools, etc. If we don't consider it to be a good book, we will not sell it. Rick Wagner, P.O. Box 41854, Eugene, OR 97404 (541)688-6899 wagner_r@pacinfo.com www.qualitybladebooks.com

Spyderco/Goddard Model C16PSBRG, \$65.00, free shipping when you mention OKCA. Goddards 473 Durham Ave Eugene OR 97404 (541)689-8098

Buy, Sell, Trade: Victorinox and Wenger knives. Need SwissBuck Models 87533, 87535, 87536, 87544 and 87553. New in box or like new preferably. Call Allen Shurtliff at (208)454-9966 or allenknives@msn.com

Wanted: Information re H M Finch stag handled Bowie knife. History info?? Michael Luft email mereload@aol.com

Wanted: Information regarding the 20th Anniversary OKCA knife created by Wendell Fox. Scrimshaw by Jerry Whitmore. Who has it??? Contact Elayne OKCA (541)484-5564 email info@oregonknifeclub.org

WANTED: Knives by Angus Arbuckle (1924-1982) of South Africa. Marked "ARA: in a diamond (early mark) or "Handmade ARA" over a winged cat. Contact: Richard Schechner P.O. Box 181923 Coronado, CA 92178 (619)437-0564 rgs522@san.rr.com

Knife Laws on-line. Federal, state, local. Bernard Levine (541)484-0294 www.knife-expert.com.

For Sale: Made in France. Ready to blue or polish. Heavy 1095 French drop forge patch knife blades- 5 assorted- 2-1/2 to 3-3/4 plus strong rod tang. Pre hand shaped. You just sharpen and handle with stag or branch wood. Then sharpen as you will (5 blades) including shipping \$33.00. Visa/M/C/AMX. Sorry no pictures. 100% satisfaction. Club member Elliott-Hiltary Diamond 6060 E Thomas Rd Scottsdale AZ 85251 (480)945-0700 Fax (480)945-3333 usgrc@cox.net

Wanted: SEGUINE Knives -Please call Jack at: (805)431-2222 or (805)489-8702 --email:jh5jh@aol.com

Randall Made Knives. Buy, Sell, Trade. Also a good selection of Case knives, and many custom knives for sale or trade. Jim Schick www.nifeboy.com (209)333-1155.

Pierce-Arrow throwing knives, Claw Z throwing knives and the new NEV-R-MIS throwing Bowie. I ran out last year so please pre-order if you want to be sure to get what you want. Bob Patrick (604)538-6214. bob@knivesonnet.com.

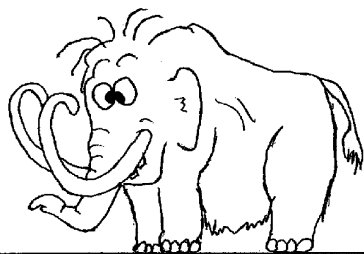
I'm working on a display about Stan Shaw for a future show. Knives and any ephemera, information, stories etc. would be greatly appreciated. Bob Patrick (604)538-6214. bob@knivesonnet.com.

Randall Knives - A Reference Book by Sheldon & Edna Wickersham. A comprehensive guide for knife collectors and enthusiasts to help approximate the age of knives owned. This is not a pricing guide. 8-1/2" x 11" hardcover format. 250 pages consisting of 22 chapters with 250 full color photographs. \$64.95 + \$5 S&H. Check or MO payable to Sheldon Wickersham (406)257-2228. Credit card orders can be placed through bluestarknives.com.

The views and opinions implied or expressed herein by authors and advertisers are not necessarily those of the Oregon Knife Collectors Association, its editors, or its officers; and no responsibility for such views will be assumed. The OKCA, its officers and its editors assume no responsibility for claims of advertisers for the quality of goods and services the advertiser provides. The act of mailing or delivering a manuscript or advertisement shall constitute an express warranty on the part of the contributor that the material is original and in no way an infringement upon the rights of others. The act of mailing or delivering a letter or question to the editor shall constitute permission to publish the letter or portion thereof unless the Oregon Knife Collectors Association is informed otherwise in that letter. This Knewsletter is devoted to the general interest of the knife community and does not include personal information such as births, deaths and illness. We also strive to use only material that is directed to the world of cut. Our charter mandates that our mailing list of the membership cannot be sold or used by other than the Oregon Knife Collectors Association.

Cut-toon

Drank knives 10,000 BC.



The "Mastodumb," the first of the pachyderms to go extinct.

williams
knives
brockley page

OKCA Club Whot-zits & Whos Zits

Darold (Ole) Olson
President (541) 285-1412

John Priest
Vice President (541) 689-6020

Elayne Ellingsen
Sec/Tres. (541) 484-5564

Craig Morgan
Master at Arms (541) 345-0152

Dennis Ellingsen
Show Coordinator (541) 484-5564

Knewslettter by elayne & dennis

Cut-toons by Judy & Lonnie Williams

Web page
<http://www.oregonknifeclub.org/>

Club email okca@oregonknifeclub.org

OKCA
PO BOX 2091
EUGENE OR 97402
(541) 484-5564

Copyright (C) 2008 Oregon Knife Collectors Association. No part of this Knewsletter may be reproduced without permission of the OKCA. Email info@oregonknifeclub.org. Layout and printing by InstaPrint - 1208 W. 6th - Eugene, OR 97402 - Phone (541) 686-8591





The Knewslettter
Oregon Knife Collectors Association
PO Box 2091
Eugene, OR 97402

Knife Events Calendar

October 2008

- Oct 10-11 - BAKA Show -Santa Clara CA (KW-B)
- Oct 17-18 - Northern Lakes Show - Janesville WI (KW-B-TK)
- Oct 24-26 - Shepherdsville KY Fall Show (KW-B)
- Oct 31-01 - Ohio Classic - Cambridge (B)

November 2008

- Nov 01-02 - Ft Myers Knife Show - FL (KW-B)
- Nov 01-02 - Mt. Vernon Knife Show - IL (KW)
- Nov 20-22 - Parkers' Greatest Show - Sevierville TN (KW-B)
- Nov 22-23 - Arizona Knife Collectors -Phoenix AZ (KW-B)
- Nov 21-23 - New York Custom - (KW-B-TK)

December 2008

- Dec 13-13 - Oregon Winter Knife - Eugene Oregon (KW-B)

January 2009

- Jan 16-18 - Chesapeake Knife -Timonium MD (B)
- Jan 16-18 - Las Vegas Custom Show - NV (B-TK)
- Jan 24-25 - Gateway Cutlery Fair - St. Louis MO (KW-B-TK)
- Jan 30-01 - Gator Cutlery Club - Lakeland FL (TK)

February 2009

- Feb 07-08 - Western Reserve Cutlery - Dover Ohio (KW)
- Feb 14-15 - Arkansas Custom Show -Little Rock (B-TK)
- Feb 27-01 - East Coast Custom - NY (B)

March 2009

- Mar 06-08 - Expo 09 - Pasadena CA
- Mar 13-15 - NKCA Georgia Show - Dalton (KW-B)
- Mar 14-15 - Bunker Hill - Bethalto IL (KW)
- Mar 27-29 - Badger Knife Show - Janesville WI (KW-TK)

April 2009

- Apr 10-12 - NKCA Ohio Show - Mitchell KY (KW-B)
- Apr 18-19 - Oregon Knife Collectors - Eugene Oregon (KW-B)

May 2009

- May 02-03 - NCCA Mystic CT Show (KW-B)
- May 29-31 - Blade Show - Atlanta GA (B)

DINNER MEETING

Wednesday Evening

October 15, 2008

Third Wednesday of the Month

Sizzler Restaurant

1010 Postal Way
Gateway Area
(Across from the Post Office)

6:00 PM Dinner
Followed by meeting

Come Knife with us!
Bring a Show-N-Tell knife!



Contact Dennis or Elayne (541) 484-5564 for additional information on OKCA events. For non-OKCA events, contact the sponsoring organization. Additional info = (B)Blade Mag. -(KW) Knife World - (TK) Tactical Knives

