



## NEWSLETTER IN A KNUTSHELL



- ✓ Paul Wellborn
- ✓ Remington Pearl
- ✓ Old Knife Makers
- ✓ Choosing a Blade Style
- ✓ T-Shirts
- ✓ Lone Wolf Paul Knife
- ✓ Application Forms
- ✓ Display Award Knife
- ✓ Mini Show

Our *international* membership is happily involved with "Anything that goes 'cut'!"

December 2009

### Paul Wellborn - Charter Member ibdennis

Anything that was different is Paul's claim to collecting, and his reason for owning something rested on the simple notion that he liked it. He became a charter member in 1976 to the Oregon Knife Collectors when he gravitated to knife collecting as yet another area of interest.

In 1945 Paul was in the Merchant Marines and felt comfortable that this move would protect him from the military draft. One of the few items that defined his collecting while stationed in Japan was trading cigarettes for a Japanese kimono. He also made a knife in 1945, enhancing a U.S. military knife with handles made from a Japanese Zero airplane windshield. He also managed to get a Japanese sword while he was there. We are proud to say that Elayne and I have that knife and the kimono.

But Paul's idea to avoid a military adventure by enlisting in the merchant marines ended in 1952 when he was drafted and went to Korea. Oh, well. Mechanical prowess was a talent he was good at in the military; and when he returned, he opened an automotive repair garage in south Eugene, Oregon. When he retired from that, he taught automotive repair classes at Lane Community College. Retirement gave Paul time to continue his collecting and to enjoy his treasures.

To visit Paul's home is like taking a step back in time. He has a museum full of curiosities and wondrous things that he just plain likes. Over the years he has gravitated from one interest to another until he feels it is

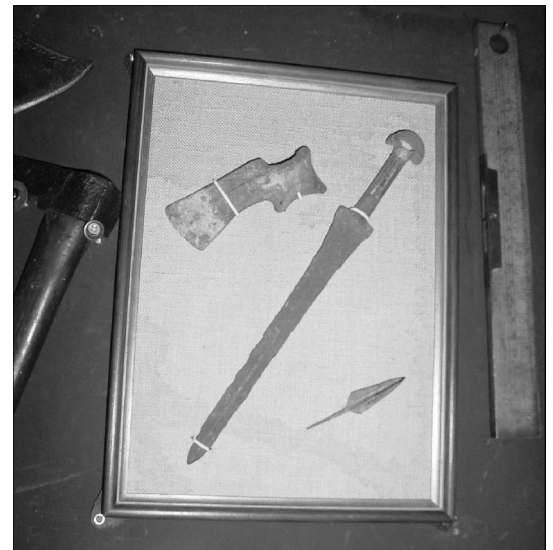
complete. His first interest many years ago was a fascination for Colt percussion handguns. He collected them with intensity, but this was soon abandoned when the prices back then began to get really expensive. He collected other firearms that were typically of the 1800s time period and decided to find other subjects that were not firearms. Firearms laws were getting stifling, and Paul did not want to fall victim to any

legal problems that could happen in this collecting field. Eventually this led to his interest in cutlery. But before I go into the subject of cutlery, let me briefly outline several other areas of Paul's collection.

Automobiles were a natural collecting media for an automotive mechanic. He specialized in Ford touring cars, vehicles made between 1913 and 1936. But space to store these vehicles was a problem. And then there were the seven airplanes he had. It was all a matter of real estate where the space took precedence over the collecting.

Kitchen items seemed to capture Paul's interest and touring his home reflects the kitchen theme. He has old coffee grinders, coffee pots, griddles and toasters. And boy does he have toasters. Our local newspaper did an article on some person that had a huge collection of 30 toasters. I alerted our paper that Paul had 400 toasters with 50 of those made by Landers Frary and Clark. But that was wrong too as the count is between 700 and 800. And then again he has electric lunch boxes and wooden pencil markers too.

And that leads us to cutlery. A cutlery set is composed of a slicing knife, a fork and sharpener for the most part.



Continued on page 4.

# Unusual Remington Pearl Utility Knife Jim Pitblado

By the time you get to read this article, the holidays will be in full swing and the OKCA April 2010 show will be only five months away. Of course I am already looking forward to this show; because it is one of the few knife shows that I personally attend, and the only one at which I do a display and sale table.

I had a great OKCA show in 2009 with my Official Boy Scout Knife display which was well received. I also experienced an unexpected large amount of sales of Remington and Randall knives at my sale table. As you might recall, we were in the midst of some economic fears and instability last April; but I certainly did not notice it at the show. I saw numerous buyers with cash to spend and complaints from many that there was just not enough high quality old cutlery on the sale tables to satisfy their urge to spend. So for all of you who are attending the OKCA 2010 show in April, I recommend that you bring some good quality old cutlery to sell or trade; along with the stuff that might have grown stale due to the number of years it has been on the sale table, or the fact that it has been priced for years and not priced to sell.

I too was disappointed in what I could find to purchase to add to my collection or put on the sale table last April. In fact I only purchased

desperation as I was not certain it was actually a legitimate Remington production knife, but more likely and at best a “lunch box” knife.

After the show when I looked at the knife I still was unsure why I got it as I was still unsure of its manufacture as it had no model number on the tang, was not pictured in any catalogue, was not mint, had an unusual abalone circle shield and a strange four blade configuration. To justify the purchase was the price, a nice Remington tang stamp on the master blade, a full visible etch and mainly the fact that I love knives with scissors, corkscrews, four blades and pearl scales. So I put the knife in my Remington display box and did not think too much about it until August of this year.

In August I came upon the second of these Remington pearls and, after examining it, became the proud owner of a new addition to my collection. A close examination of this essentially mint knife reveals that it is of high quality and for sure came out of the Remington factory as a special order or special production knife for a fraternal organization, the American Legion. The knife body is 3-1/4 inches long, and it appears the body is custom assembled for the four blades. The master blade has the Remington UMC, circle, Made in USA tang stamp, perfect Remington Trademark etch, but no tang stamp number. At the other end is the old model short, stubby caplifter/screwdriver. Separated by a special third liner are the scissors in perfect shape, and the same as scissors on other Remingtons that I own. Finally on the reverse side is the wire corkscrew. The three liners are all nickel silver and beautifully milled as is expected on a Remington high quality pearl folder. Of course the special part of this knife is the gold and blue American Legion shield. It is 3/8 inches in diameter and smaller than any I have been able to find. It also has ten tiny points around the edge, and the pearl was somehow cut so that these points fit tightly into the pearl.

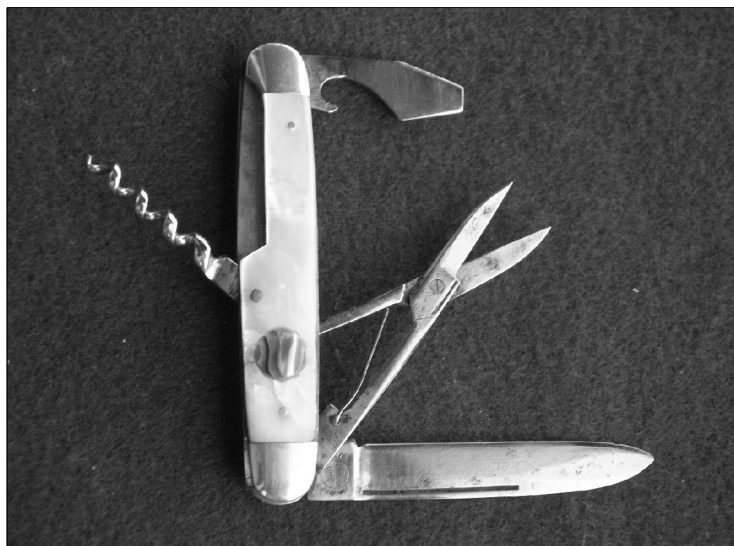
So what I think is that I now have two variations of this rare and unique knife; and I am wondering if there may be others out there with different shields or maybe no shield, or even one of the standard Remington shields? Remington offered custom orders on selected pearl knives to over 15 fraternal organizations, and the American Legion was one of these. So did other organizations order this custom produced knife? How many were ordered? How many have survived? Was it only a prototype and not actually produced in any quantity? Was it for the salesman to show fraternal groups? Who knows these answers; certainly not me.

So if you have any information about this style knife, I would very much like to hear from you by letter or email or just give me the information when I see you in April 2010 at the OKCA show.

Have a wonderful holiday season.



two items at the show. One was a Remington box for the Whittler's Set of Knives with the instructions but without the knives. The other was an unknown four blade Remington pearl utility knife which I got in



# OKCA Knews and Musings

ibdennis

## Dues & tables

Membership in the Oregon Knife Collectors is based on a calendar year making December 32 the last day of membership for 2009. The dues are minimal considering the *Knewsletter* and free entries to our Shows. A good deal at \$20 or \$23 for spousal/family. If you were a tableholder at our April 2009 Show, your membership code on the label will advise you whether you have paid for a table and membership. If it is not 2010 or greater, then you have not attended to these things. We want you back as both a member and a tableholder so please step up to the plate. Ours is a non profit organization so this is all for you.

## The Mini Show....

We are shy of our goal of tables to fill the December 12 Mini Show. I suspect we will have a last minute rush of requests for tables. At this time we are about 70 tables strong or weak depending on your perspective. This is a goodly amount of tables for a decent show, but the finances nag at us as to its worth. So please support our event by being there and having a table. Entry is free to members of the OKCA and \$2.00 admission for all others. Wear your badge.

## Toys for Tots.....

Our organizer for the **Toys for Tots** will be **Bryan Christensen**. Bryan has organized this event for several years now; and this year more than most suggests we, as an organization, should support this worthwhile event. The economy has devastated many families with youngsters, and our efforts will have a big impact on this holiday season. Soooo... to refresh your memories.... bring a toy or several that are **new and unwrapped** to the Mini Show on December 12 and place it on the table as you come in to the show. Bryan will contact the Marines that will pick these items up at our show on Saturday. Let's support this bigger than we have ever done before. It is a great cause. Anyone can participate in this drive. In fact free admission to the Mini Show (if not a member) is available to anyone that brings in a toy.

## Jose' Diaz my hero....

Jose' has completed his display award knife. This is one of 12 knives we will offer to the best displays at our April Show. Go to our web sight for a color look at this knife that Jose' has crafted for us from the blade grinding competition held last April. See the write up for details in this issue.

## Club Knives

We have finally decided on a Club knife for 2010. The knife will be a Lone Wolf Paul knife and will be in their new Defender series. We have had Paul design knives in past years, and they have always been a sold-out knife. We have a regular Defender knife as a sample, and everyone that has touched it is impressed with its design and function. This year's knife selection was a chore, but the wait for this knife seems to have made it all worthwhile.

## December 16th Dinner meeting

I for one look forward to our monthly dinner meetings at the Sizzler restaurant. The meeting this month will be the third Wednesday as usual and that date is December 16. Make sure you mark the date and prepare to have good food, meet good friends and share an evening of warmth, education and fun. Bring something sharp for Show-N-Tell.

## Articles Pleeze

The *Knewsletter* is the heartbeat of the Oregon Knife Collectors. Please help us and send your articles for publication in our *Knewsletter*. We only ask it be original to yourself, and we will help all we can with the writing end of things. Thank you to **Tedd Harris, Jim Pitblado and Merle Spencer** for their help in this *Knewsletter*.

## Free ads

For some reason the submittals for a free ad have been very inactive. This is a nice perk for Club members. Not to forget that this space is for you. We have had a response so there have been a few new advertisements in this issue.

## Did U Know....

That our website posts the next ten years of dates for the Oregon Knife Collectors annual Shows?

**Did you also know** that our website is in constant update mode which show knives, articles, a knife show calendar and answers questions about our organization and the "world of cut?" **Did U know** that the deadline for first



right of refusal on tables at our Show is December 15, 2009; and you have only but a few days to get that reservation in.

## Smile Knife for December....

I was rifling through my knives at bullet speed when I realized that most would get a big bang out of some interesting smile knife variations. So at half cock and with my sights on the goal, I hunted up two special cartridges that were a cut above. These rounds are shoulder above and primed to make you smile. Turn the slug around and now you have a knife with a brass handle. The Remington shot is from the 1920s and the Western Arms (WAC) is circa late 1940s. Ballistically they are great knives.



Paul Wellborn...*(Continued from page 1.)*

Gorgeous sets that were often used for special events and gatherings. In addition to the many loose sets he has, he is also proud of the 40 cased sets of cutlery. Names that he is proud of are Will & Finck and Michael Price. In knives his interest includes Marbles knives, and he is especially proud of his MSA folding knife that he knows to be correct. And of course he also collects Marbles axes too. Large folding hunters and Daddy Barlows are also interesting, so Paul has gathered up some 400 specimens of these knives. And then there are the tools. Wooden planes and braces seem to capture specific interest here. And then there are the butcher knives and skinner pattern knives that fill a wall in his office area.

Sometimes these items cultivate an historical interest, so Paul has gathered up paper and books that relate to them. Over the years Paul has allowed me to copy some really old paper that he has. And with this interest Paul has become a walking encyclopedia of this and that and anything that is different and that he likes.

In 1993 I encouraged Paul to put up a display at our Oregon Knife Show of some of his things that go cut. He resisted as he did not feel that what he liked might not be what others liked. His award for a best display proved otherwise.

Collecting is one thing, and the regret Paul shared with me today is that he is not able to hand make the knives he enjoys making. These would be old tools like scythes and files that he makes into hunting style knives and then graces them with beautiful right-for-the-time handles.



He even makes sheaths for these knives that are time correct for the knife style and pattern.

Paul Wellborn is a charter member of the Oregon Knife collectors association and in 1976 when this started Paul loaned our organization money to launch the first Show. His generosity and investment into our organization has served us well. It is a pleasure to know and share with Paul Wellborn his fascinating interest in things that he likes. A very special man.

## Oregon Knife Show Display Award Knives

The display award knives are a special award knife given to the best displays at the Oregon Knife Show. In the past few years the blades that were used in the grinding competition are finished by the grinder or others who volunteer to finish the blades. These are knives that are truly unique, one-of-a-kind prizes. This emphasizes the tie in the association between knifemakers and collectors; we are all involved in the circle of "cut." Twelve knives will be awarded for some 25 displays that grace our Show every year. These displays are museum quality collections that mesmerize and educate visitors to our event.

Display awards for the 2010 Show were blades that were used in the grinding competition at the 2009 Show.

The knife design for the 2009 blade grinding event was an original pattern from Bill Harsey. Bill is an award winning designer in both the handmade and commercial field. Our sincere thanks go to Bill for this generous gift. Larry Criteser modified the pattern to make it compatible for the grinding competition. Larry profiled 12 blanks for the competition.

The steel was 1095, donated by Pacific Machinery and Tool Steel Company of Portland, Oregon.

Jose Diaz from Ellensburg WA has enhanced this blade to make a knife using Desert Ironwood for the handle. The blade was edge quenched with a salt bath triple temper. His web page is <http://www.diaztools.com>



# What Happens To Old Knife Makers? Merle Spencer

What happens to old knife makers, do they just grind away?

This question came to mind as I was hand-sanding a blade that I had recently received back from being heat-treated.

This was on my eighty-second birthday, which I reached last summer; and I thought about how I had bought this blade from the late Woody Woodcock over ten years ago. In fact, I started working on this blade at least ten years ago. Some other project or promised knife gift always seemed to get in the way. And sometimes the engraving wouldn't go right, and I would lay it aside for months at a time. I had to grind all the back filing off and start over because I got the notches on one side off from symmetrical with the other side. Luckily Woody had made this blade wider than it needed to be, so it turned out to be very graceful in shape.

Not that I often take this long to put a knife together; I usually can complete one in under two years. This is a hobby. I don't really call myself a knife maker – more of a knife enhancer. I take a blade someone has already ground to shape and put the pretty stuff on – the hours of hand sanding to a mirror finish, a little back filing, perhaps some engraving and all the cutting, gluing, shaping and polishing of the handle that results in a pretty one-of-a-kind knife.

Anyway, here I was sanding away with wet or dry sandpaper and wondering how much longer it was going to take to get rid of those little barbs on the engraving that I should have sanded off while the blade was still soft. I wondered if I would still be doing this type of activity ten years from now. (Perhaps it will take ten more years to finish this knife.)

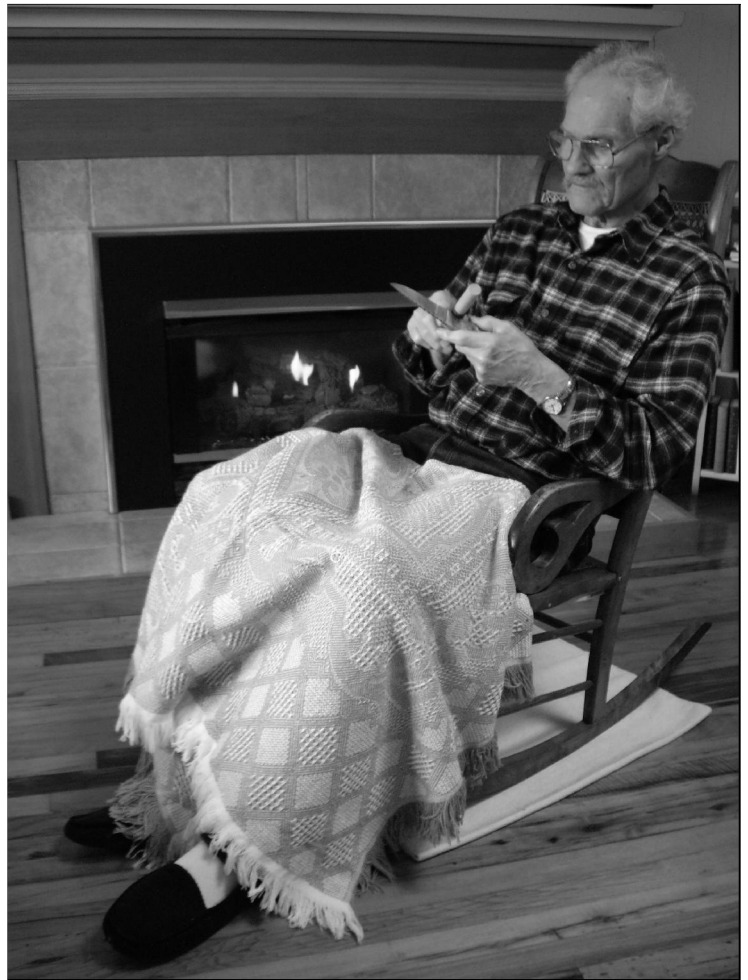
How old do knife makers get, anyway? Do some still work into their nineties?

I know quite a few knife makers. Most of them I have met at shows over the past twenty years. But we always talk about knives. We seldom talk about age, so I don't know how old a certain person is or how long the person has been making knives. It surely would be interesting to know if knife makers, in general, love their work so much that they keep at it until they can't do it anymore.

I think I will.

I like to visit with people. Whenever I meet someone new, I usually ask in the course of the conversation about what the person does or what they did before retirement.

I have yet to hear anyone answer, "I am a retired knife maker."





# OREGON KNIFE COLLECTORS ASSOCIATION

BOX 2091 • EUGENE, OR 97402

MEMBERSHIP APPLICATION AND SHOW TABLE CONTRACT

**\*PLEASE RETURN THIS ENTIRE PAGE or a photocopy. DO NOT CUT IT UP!\***

Name(s) \_\_\_\_\_

Mailing Address \_\_\_\_\_

City \_\_\_\_\_ State \_\_\_\_\_ Zip \_\_\_\_\_

Phone: Eve ( \_\_\_\_\_ ) \_\_\_\_\_ Day ( \_\_\_\_\_ ) \_\_\_\_\_ Date \_\_\_\_\_

Collector  Knifemaker  Dealer  Mfr./Distrib.  Other \_\_\_\_\_ Email \_\_\_\_\_

OKCA membership includes knewsletter, dinner/swap meetings, free admission to OKCA shows.

\_\_\_\_ Start/ \_\_\_\_ Renew my/our OKCA membership (\$20 individual/\$23 family) \$ \_\_\_\_\_

## 35<sup>TH</sup> ANNUAL OREGON KNIFE SHOW • APRIL 17-18, 2010 430 — 8'x30" TABLES

Exhibit Hall, Lane Events Center and Fairgrounds, 796 West 13th Ave., Eugene, Oregon.

For Information Contact Show Chairman: Dennis Ellingsen, (541) 484-5564

**AUTOMATIC RESERVATIONS:** If you had a table at the 2009 Show, you have an automatic reservation for the same table in 2010, but THIS RESERVATION EXPIRES DECEMBER 15, 2009. You may still apply for a table after this date, but we cannot guarantee a table after December 15. NO RESERVATIONS HONORED OR APPLICATIONS ACCEPTED WITHOUT FULL PAYMENT! Note to NEW exhibitors: your table(s) will be assigned after 12/15/09.

**ALL TABLE HOLDERS AND VISITORS** agree to abide by the OKCA show rules, and to hold the OKCA, its officers, and the Lane Events Center harmless for any accident, loss, damage, theft, or injury.

**ANY QUESTION OR DISPUTE** arising during the show shall be resolved by the Show Chairman, whose decision shall be final.

**THIS IS A KNIFE SHOW.** All tables must be 90% knives or knife related items (e.g. swords, axes, edged tools, edged weapons, knife books, knifemaking supplies). If in doubt, check with the Show Chairman ahead of time. The OKCA reserves the right to bar any item from display or sale. No firearms made after 1898 may be sold or shown at this show.

**ALL EXHIBITORS are required to keep their tables set up throughout the public hours of the Show: 8 AM Saturday to 3 PM Sunday. ANY EXHIBITOR WHO LEAVES OR COVERS THEIR TABLE BEFORE 3 PM SUNDAY FORFEITS HIS FUTURE RESERVATIONS AND WILL BE DENIED TABLES AT FUTURE OREGON KNIFE SHOWS.**

**DISPLAY TABLES** will be around the perimeter of the room. All displays are eligible for display awards, which are handmade knives donated by members and supporters of OKCA. Display judging will be by rules established by OKCA. Special category awards may also be offered. **NOTHING MAY BE SOLD FROM DISPLAY TABLES.**

**SALE/TRADE TABLES** Sharing of tables will not be allowed. Exhibitors must comply with all applicable local, state, and federal laws. Oregon has NO SALES TAX.

**BADGES:** Each table holder is entitled to one additional show badge. **NO EXCEPTIONS.**

**KNIFEMAKERS** who are present and are table holders at this show may enter knives in the knifemaking award competition.

**FOR MORE INFORMATION** on categories and judging criteria in the display and handmade knife competitions, contact the Show Chairman.

**SHOW FACILITATORS** will be provided by OKCA from 10AM Friday until 4 PM Sunday. However, exhibitors are responsible for watching their own tables. Neither the OKCA nor the Lane Events Center will be responsible for any loss, theft, damage, or injury of any kind.

**CITY AND COUNTY REGULATIONS** require that there be:

- No Smoking within the Exhibit Hall at any time;
- No alcoholic beverages consumed within the Exhibit Hall during the public hours of the show;
- No loaded firearms worn or displayed at the show;
- No swords or knives brandished or displayed in a provocative manner.

Violators of these safety rules will be asked to leave.

**NOTE ON SWITCHBLADES AND DAGGERS:** In Oregon it is legal to make, sell, buy, or own switchblade knives. However, it is **ILLEGAL** to carry a switchblade knife, a gravity knife, a dagger, or a dirk concealed on one's person, or for a convicted felon to possess a switchblade or gravity knife. Most other states have banned switchblade knives. Under federal law, it is **ILLEGAL** to mail, carry, or ship a switchblade or gravity knife across state lines.

## SHOW SCHEDULE

**Friday, April 16, 2010.**

10am - 7pm set-up; open ONLY to table-holders and members of OKCA.

**Saturday, April 17, 2010.**

7am-8am set-up. 8am-5pm open to public.

**Sunday, April 18, 2010.**

8am-9am set-up. 9am-3pm open to public.

**Tables that are cancelled will revert back to the OKCA. Subcontracting tables is not permitted.**

**EXHIBITOR CONTRACT:** PLEASE ENCLOSE FULL PAYMENT WITH THIS FORM. Full refund granted if reservation canceled by February 15, 2010. **DON'T GET LEFT OUT!!! MAIL THIS PAGE AND YOUR CHECK TODAY. A signature is required.**

Type of knives on your tables \_\_\_\_\_

Name for second badge \_\_\_\_\_ (two badges per table holder)

Qty \_\_\_\_\_ Club Dues (Total from above)..... \$ \_\_\_\_\_ **NO EXCEPTIONS**

Qty \_\_\_\_\_ Sale/Trade table(s) @ \$95 each (members only) .. \$ \_\_\_\_\_

Qty \_\_\_\_\_ Collector Display table(s) **free with sale table:**

Qty \_\_\_\_\_ Saturday Nite Social @ \$5.00 ea..... \$ \_\_\_\_\_

TOTAL ENCLOSED (make check payable to O.K.C.A.) ..... \$ \_\_\_\_\_

I have read and agree to abide by the OKCA show rules as set forth in this contract, and to hold the OKCA, its officers, and the Lane Events Center harmless for any accident, damage, loss, theft, or injury. **Signature and date required.**

Signature \_\_\_\_\_ Date \_\_\_\_\_

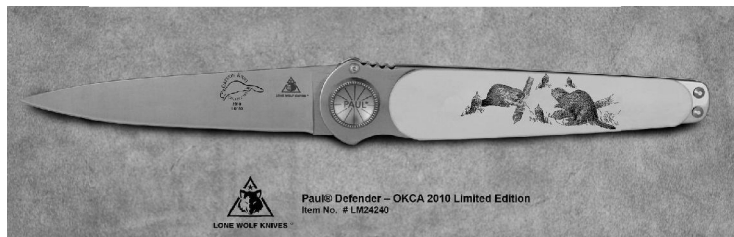
**\* PLEASE RETURN THIS ENTIRE PAGE or a photocopy. DO NOT CUT IT UP!\***

www.oregonknifeclub.org

# Oregon Knife Collectors' 2010 Club Knife



Oregon Knife Collectors Association  
2006 Collectors Knife - Paul® Presto - Beaver Scrimshaw  
Item No. LM21890



Paul® Defender - OKCA 2010 Limited Edition  
Item No. # LM24240

The Lone Wolf Paul Defender is this year's Oregon Knife Collectors' Club 2010 knife. A prototype version is shown above as well as the 2006 Paul Presto knife which was 6" overall. The Presto knife was a sell out in 2006. The Defender for 2010 will have ivory micarta handles and will have reproduction scrimshaw artwork with a Beaver scene. The knives will be serial numbered, and our logo etched into the blade. This is a handsome pocketknife that measures 9" overall. Only 50 of these knives will be offered. The knives will be boxed and can be purchased by advance sales. They will be available at our 2010 Show. Serial numbers will be randomly drawn, but you can request the same serial number you had for the 2006 knife.

# Oregon Knife Collectors' T-Shirts



Over the years our Oregon Knife Collector T-Shirts have proven very popular. This year we are partnering with Jerry & Kay Whitmore to offer T-Shirts to members and visitors who want a shirt at a great price. These shirts will be made available at the Show in April but must be ordered in advance to get the very special price. A bargain at \$8.00 each for a quality T-Shirt and will help us in this fund driving effort. The colour will be sage green and the OKCA logo will be on the front left in brown, dark green, white and black. Tastefully elegant. \$8.00 on pre-order but much more if you wait until Show time. See this in colour on our website under the "Ads" link.

Name \_\_\_\_\_

Address \_\_\_\_\_

City State Zip \_\_\_\_\_

Phone Number \_\_\_\_\_

Paul Defender @ \$150 \_\_\_\_\_

Serial number request if you had purchased a 2006 knife.  
\_\_\_\_\_

Shipping, if needed, add  
\$20 \_\_\_\_\_

Total \_\_\_\_\_

Payment in full at time of order.

Name \_\_\_\_\_

Phone \_\_\_\_\_

\_\_\_\_\_ T-Shirts (Total)

S \_\_\_\_\_ M \_\_\_\_\_ L \_\_\_\_\_ XL \_\_\_\_\_ Other \_\_\_\_\_

Total @ \$8.00 each \_\_\_\_\_ No shipping.

Send payment to  
OKCA - PO Box 2091 - Eugene, OR 97402

[www.oregonknifeclub.org](http://www.oregonknifeclub.org)

# The Seek-re-tary Report

by elayne

The November meeting was held November 18 at The Sizzler Restaurant, Springfield OR. It was attended by 34 members.

We are up to 70 tables (as of *Knewsletter*) which is encouraging but short of the 100 we had hoped to have.

We will have the 2010 membership cards available for pick up at the December show. Thank you, **John Priest and Larry Criteser** for your labors. It is no small task printing each of the names on the cards and laminating and alphabetizing each of the 1500 cards.

Please note the date on your *Knewsletter*--2009 must renew your membership. If you do not pick up your card at the show, it will be mailed with the table confirmations which are mailed at the end of December.

Be sure to find your 2009 membership card since we will be charging \$2.00 for admission to the December 12 show. Be sure to bring an unwrapped toy for Toys for Tots. **Bryan Christensen** has agreed to coordinate this event.

Have you paid for your table for the 2010 Show?? Deadline for your 2009 table location is December 15. Table confirmations will be mailed at the end of December.

We have made a decision about the Club knife for 2010. It will be the Paul Defender, and the order form is in this *Knewsletter*. The knives will be available for pick up at the 2010 Show. I recommend you order early since the Paul knives that we have offered in the past have always sold exceptionally well.

We have also included the order form for the 2010 Club T-shirt which will be available at the 2010 show. The cost will be \$8.00 if ordered prior to the Show. Please be sure to note the size needed. **Jerry and Kay Whitmore** are providing the labor for this project.

**Jose Diaz** has completed his 2009 grinding competition knife which will be presented as a display award at the 2010 Show. A photo of the knife has been printed in this *Knewsletter* and is also posted on our website.

We will have a meeting December 16 at the Sizzler. Come see us.

Happy holidays and the very best wishes for the coming year.

See you at the December show--December 12.



## Choosing A Blade Style Tedd Harris

Let's talk about what kind of knife you want to make.

First, who is the knife for? You, your wife or husband, child, grandchild, nephew, niece, friend, neighbor--whoever it is, the size and strength of the individual need to be considered. A man who is accustomed to working with his hands will probably feel more comfortable with a knife that is large and heavy than a woman whose hands are small and who normally does house or office work. A young person will be more comfortable with a knife that is scaled down to fit the hand and strength of the user.

Second, what is the major job the knife will be used for? Is it to be a hunting knife, camp knife, kitchen knife, military knife. What it will be used for makes a difference in how thick, wide and long the blade needs to be to do its job efficiently and well.

Third, how long will the blade be? This is important. Some folks like long blades, while others prefer short blades for the same tasks. It is necessary to know this so the knife can be designed to be just right for the person who will use it. Some work is more easily done with a long blade; and other things are best handled with a small, short blade.

Fourth, what shape is best for the intended use of the knife? Keep in mind that a blade shape has three parts--edge, spine or back, and point. Start with the edge. Will it be straight most of the length or curved the entire distance? How wide will the blade be? Next, where is the point to be located--high, low, more in the middle? Now the back of the blade can be designed to flow to the point to achieve the blade's purpose.

Suppose the knife is to be a hunting knife. A hunter may have only one knife, so it will be used for everything that needs to be done on a hunting trip. This may include general camp duties like splitting kindling and making fuzz sticks for a fire, slicing bacon, peeling potatoes, cutting rope, cutting boughs to make a shelter and bed,

making tent stakes--whatever comes up. If the hunt is successful, then the knife will be used to dress out and skin the animal. Hence, the blade design must be capable of doing all these chores.

Many hunters carry several knives, because they don't want to stop to sharpen in the middle of a job. Or they may have a different knife for each job.

However, if the knife is to be used in the kitchen, then the cook needs to be consulted. What that person likes to use will guide the design of the knife.

The most important part of the knife is the edge. It is what actually does the work. All the rest of the knife is there to help deliver the edge to the work. It must be sharp and tough enough to do whatever it is called upon to do without being damaged.

Edge geometry refers to the cross section shape of the blade at the edge. It can be thick and blunt, or thin and very sharp. Or it can be anywhere in between. The work a knife does dictates how the edge is to be shaped and sharpened. Heavy, rough work needs a bit thicker edge with more steel to support the cutting edge. Light, slicing work is done more easily with a thinner blade and edge.

Next time we'll discuss tangs and handles.







# OKCA Free Classified Ads

Free classified ads will run up to three issues and then be dropped. Available only to paid members. Write your ad on anything you have handy (except extractor arms with ventricle corpuscles) and email or snail mail to the **OKCA, PO Box 2091, Eugene OR 97402**. The number and size of ads submitted by a single member will be accepted, or excepted, dependent on available space and the mood of the editors.

**Spyderco C20BGMPs**, Sprint run of 600, Burgundy/brown Micarta handles, key chain sized knife with a blade length of 2 1/8". This is #14 on the model list of the Wayne Goddard Spyderco designs. \$65 post paid when mentioning OKCA. Check or money order to Goddard's, 473 Durham Ave, Eugene OR 97404



www.customknife.com, contact Gene at bladesmith@customknife.com, or call (541)846-6755.

**Wanted:** Information regarding the 20th Anniversary OKCA knife created by Wendell Fox. Scrimshaw by Jerry Whitmore. Who has it??? Contact Elayne OKCA (541)484-5564 email info@oregonknifeclub.org

**FOR SALE** - South Bend gear head lathe 9x32. Setup for line shaft operation. \$650. Call John Priest (541)689-6020

**Wanted** - Tableholders for the **December 12<sup>th</sup> Mini Show**.

### USEFUL REFERENCE BOOKS ON BLADES-

Collectible knives, custom knives and knife making, military knives, swords, tools, and anything else that has an edge. E-mail for a list. As our name implies, if we don't consider a book to useful and a good value we will not sell it. **QUALITY BLADE BOOKS**, C/O Rick Wagner, P.O. Box 41854, Eugene OR 97404 - (541) 688-6899 - wagner\_r@pacinfo.com

**Sheaths Available** in 5 different sizes tooled. \$15.00 each 2 for 25. Untooled \$10.00 each 3 for \$25.00. See us at the December and April show. Custom orders always welcome. Good selection and good pricing on knives as well. Ray Simonson Wild Boar Blades. (360)601-1927 www.wildboarblades.com info@wildboarblades.com

**Wanted** - Knives made by Barr Brothers. ibdennis@oregonknifeclub.org.

**FOR SALE** - Engnath Japanese style knife. 12" straight blade, not exactly a tanto. Nice temper line, handle and scabbard cut from one piece of lignum vitae. Absolutely beautiful. Call with offer -no one around here - Connecticut - knows a reasonable price. Bruce Fowler (203)457-1029

**WWII ALLIED MILITARY FIGHTING & POCKET KNIVES** 1941-1975. Buy/Sell/Trade. I'm well known in the collecting fraternity for dealing in high grade examples, and with an impeccable reputation for over 26 years now. I also do consignment sales on Ebay with a 100% Positive Feedback record for 10 years running. My eBay name is jsfischer1fs. Thank you! JOHN S. FISCHER, P.O. Box 47, Van Nuys CA 91408 email: jsfischer1@aol.com

**WANTED:** Clarence "Pete" Heath knife/knives. Articles, brochures, catalogs, letters and other Heath memorabilia also wanted. Jake Jakus S35 W33193 Honeysuckle Ct Dousman WI 53118 (414)331-1151

**WANTED:** 1962 U.S. Camillus MIL-K stainless steel utility knife. Rich Jones (503)956-5790 or rljshalom@verizon.net

**Wanted** - Table holders for the April 2010 Oregon Knife Collectors Knife Show.

**WANTED:** OKCA Club knives serial numbered "16." Need 1992 Gerber FS1—1989 Cripple Creek---1987 Al Mar Tanto—1983 Gerber Paul—1981 Gerber Gentleman Jack LST---will give \$100.00 for any 1980 Club Silver Knight. Fred Coleman (541)915-6241

**Wanted:** 1997, 1998, 1999 and 2000 OKCA silver medallions. Heceta Lighthouse, Oregon Beaver, Multnomah Falls and Mt. Hood. Call Jim (562)716-9857 or email: jppitt306@earthlink.net.

**For Sale** blade blanks, mosaic pins and lanyard tubes, stabilized wood. Gene and Sally Martin. bladesmith@customknife.com, www.customknife.com, (541)846-6755

**WANTED:** Knives by Angus Arbuckle (1924-1982) of South Africa. Marked "ARA: in a diamond (early mark) or "Handmade ARA" over a winged cat. Contact: Richard Schechner P.O. Box 181923 Coronado CA 92178 (619)437-0564 rgs522@san.rr.com

**Knife Laws** on-line. Federal, state, local. Bernard Levine (541)484-0294 www.knife-expert.com.

**For Sale:** Made in France. Ready to blue or polish. Heavy 1095 French drop forge patch knife blades- 5 assorted- 2-1/2 to 3-3/4 plus strong rod tang. Pre hand shaped. You just sharpen and handle with stag or branch wood. Then sharpen as you will (5 blades) including shipping \$33.00. Visa/M/C/AMX. Sorry no pictures. 100% satisfaction. Club member Elliott-Hiltary Diamond 6060 E Thomas Rd Scottsdale AZ 85251 (480)945-0700 Fax (480)945-3333 usgrc@cox.net

**Wanted:** SEGUINE Knives -Please call Jack at: (805)431-2222 or (805)489-8702 --email:jh5jh@aol.com

**Randall Made Knives.** Buy, Sell, Trade. Also a good selection of Case knives, and many custom knives for sale or trade. Jim Schick www.nifeboy.com (209)333-1155.

**Limited edition sprint run** of Junior Clipits. White Micarta handles, partially serrated blade. This is variation #13 in the Spyderco/Goddard Clipits. \$135.00 each, free shipping if you mention *OKCA Newsletter*. Goddards, 473 Durham Ave. Eugene OR 97404 (541)689-8098 e-mail

**Spyderco/Goddard Model C16PSBRG**, \$65.00, free shipping when you mention OKCA. Goddards 473 Durham Ave Eugene OR 97404 (541)

**WANTED:** Any information available relative to custom fixed blade marked only GW, with the 'W' slightly offset beneath the 'G'. Please respond by email to Rabonpville@sbcglobal.net or by snail mail to Ray Roe, 1007 Pine Creek Dr., Pflugerville TX 78660. Call at (512)251-0805.

**WANTED** -Any information, ie: Patent numbers and/or drawings, manufacture drawings, catalog pictures etc. for letter openers with a folding knife blade in the handle. donl200@live.com

**Buck Knives** on consignment. For huge list of knives for sale, send \$2 w/ your name and address to: Larry Oden, 1112 Veach's Ct., Peru IN 46970

**For Sale-** Duplicates from my collection of Wood Handle Coke knives, small size (3-1/2" +/-), large size (5-1/4" +/-) or trade for ones I do not have. Only wood handle knives, please. Ron Edwards, email me @ ronjoyceedwards@comcast.net

**Mosaic pins and lanyard tubes** by Sally. See at www.customknife.com, email at sally@customknife.com. Phone (541)846-6755.

**Blades and knifemaker supplies.** All blades are ground by Gene Martin. I also do custom grinding. See at

The views and opinions implied or expressed herein by authors and advertisers are not necessarily those of the Oregon Knife Collectors Association, its editors, or its officers; and no responsibility for such views will be assumed. The OKCA, its officers and its editors assume no responsibility for claims of advertisers for the quality of goods and services the advertiser provides. The act of mailing or delivering a manuscript or advertisement shall constitute an express warranty on the part of the contributor that the material is original and in no way an infringement upon the rights of others. The act of mailing or delivering a letter or question to the editor shall constitute permission to publish the letter or portion thereof unless the Oregon Knife Collectors Association is informed otherwise in that letter. This Knewsletter is devoted to the general interest of the knife community and does not include personal information such as births, deaths and illness. We also strive to use only material that is directed to the world of cut. Our charter mandates that our mailing list of the membership cannot be sold or used by other than the Oregon Knife Collectors Association.

## OKCA Club Whot-zits & Whos Zits

**Darrold (Ole) Olson**  
President (541) 285-1412

**John Priest**  
Vice President (541) 689-6020

**Elayne Ellingsen**  
Sec/Tres. (541) 484-5564

**Craig Morgan**  
Master at Arms (541) 345-0152

**Dennis Ellingsen**  
Show Coordinator (541) 484-5564

**Knewsletter** by elayne & dennis

**Web page** <http://www.oregonknifeclub.org/>

**Club email** [okca@oregonknifeclub.org](mailto:okca@oregonknifeclub.org)

**OKCA**  
**PO BOX 2091**  
**EUGENE OR 97402**  
**(541) 484-5564**

Copyright (C) 2009 Oregon Knife Collectors Association. No part of this Knewsletter may be reproduced without permission of the OKCA. Email [info@oregonknifeclub.org](mailto:info@oregonknifeclub.org). Layout and printing by instaprint - 1208 W. 6th - Eugene, OR 97402 - Phone (541) 686-8591



The Knewslettter  
Oregon Knife Collectors Association  
PO Box 2091  
Eugene, OR 97402

## Cutlery Events Calendar

### December 2009

Dec 12-12 - **OKCA Mini Show - Eugene Oregon (KW-B)**

Dec 10-12 - Parkers Greatest -Sevierville TN (KW)

### January 2010

Jan 15-17 - Las Vegas Knifemakers Show (B-TK-KI)

Jan 19-22 - SHOT Show -Las Vegas NV (B)

Jan 22-24 - Silver State Knife Expo -Reno NV (TK)

Jan 23-24 - Gateway Area Cutlery Fair - St. Louis MO (KW-B)

Jan 29-31 - Gator Cutlery Show -Lakeland FL (KW-B-TK)

### February 2010

Feb 06-07 - Wolverine Collectors Show - Novi MI (KW-B-TK)

Feb 19-21 - East Coast Custom -Manhattan NY (B-TK)

Feb 20-21 - Arkansas Custom -Little Rock (KW-B-TK-KI)

### March 2010

Mar 06-07 - Western Reserve Cutlery - Dover OH (KW-B)

Mar 12-14 - NW Georgia Show - Dalton GA (KW-B)

Mar 19-21 - Southern California Expo 2010 - Pasadena

Mar 20-21 - Bunker Hill Knife Show -Bethalto IL (KW)

Mar 26-28 - Badger Knife Show - Janesville WI (KW-B-TK)

Mar 27-28 - Texas Knife Show - Round Rock TX (KW-B-TK)

### April 2010

Apr 02-04 - Shenandoah Valley -Harrisonburg VA (KW)

Apr 17-18 - **Oregon Knife Collectors - Eugene OR**

Apr 24-24 - Solvang Custom CA (B)

Apr 30-02 - Greater Ohio Knife Show-Ft Mitchell KY (KW)

### May 2010

May 01-02 - NCCA Annual Show -Mystic CT (KW)

### June 2010

June 04-06 - Blade Show - Atlanta GA (KW)

Jun 10-12 - Parkers Greatest -Sevierville TN (KW)

## DINNER MEETING

*Wednesday Evening*

**December 16, 2009**

Third Wednesday of the Month

**Sizzler Restaurant**

1010 Postal Way

Gateway Area

*(Across from the Post Office)*

6:00 PM Dinner

Followed by meeting

Come Knife with us!

Bring a Show-N-Tell knife!



Contact Dennis or Elayne (541) 484-5564 for additional information on OKCA events. For non-OKCA events, contact the sponsoring organization. Additional info = (B) Blade Mag. - (KW) Knife World - (TK) Tactical Knives

