



KNEWSLETTER IN A KNUTSHELL



- ✓ Identifying ivory
- ✓ Opinel Knives
- ✓ Smile knives
- ✓ Smile pictures
- ✓ Summer picnic
- ✓ Show application
- ✓ Elephant toenails

Our international membership is happily involved with "Anything that goes 'cut'!"

September 2011

Smile Knives & Smile Pictures



Is it the knife or the lady that makes you smile?



Let sleeping dogs lie!



When it comes to knives: Hear no evil, speak no evil and see no evil!



The IRS knife. No fooling!



The big bang knives



EX-LAX - A friend in need!



Spell checker anyone?

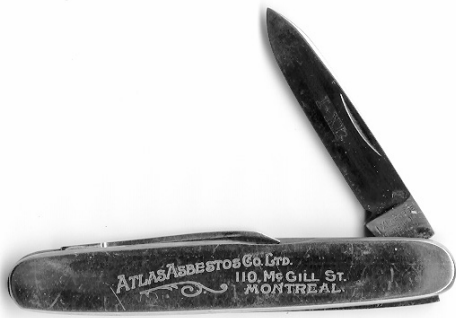


Gracious Me!

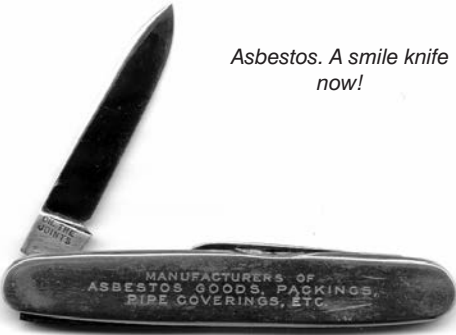


A Real Jack Knife!

(Continued on Page 2)



Asbestos. A smile knife now!



Adepthyol



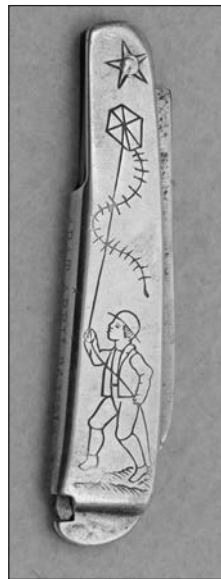
Safety Pea Knife!



The ultimate Swiss army knife



When you are larger ask for a Keen Kutter



You betcha - A School Knife!



Uwanta Knife.



Valentine Knife!



Sell & Repent!



This here is a man size knife.

OKCA Knews and Musings

ibdennis

Yawn.....We had a great summer and the hiatus (an interruption in the intensity or amount of something - like knife club duties) has given Elayne and me-self a fresh approach to the organization. We are ready to rock and roll so to speak. We have some articles in our pipeline that will carry us through a few *Knewsletters*, but more is always gooder. We have talent and experience in our group, and we need articles to keep our organization soluble. So articles please.

Speaking of articles.... Last March Dan Westlind submitted an article on ivory; but, as a result of transitions of the staff at our printing company, the article got cut and chopped. We felt badly so Dan said he had an addendum to the article and more pictures. So this issue finds this educational and fascinating article as it should have been the first time. And with more.

John Priest and I wandered down to Reno NV in August to do the 1000 table gun show there. Being able to enjoy and wander a show was a real treat for me. Although primarily a gun show, there were a few knife treasures to be found. Jim Schick had Randalls and more and even let go of a special Wayne Goddard knife I wanted. Pestering, begging and badgering sometimes works.

Mini Show..... The December 10 Mini Show is still going to happen. There has been some discussion about the timing of the Show, but a change is not even remotely easy to make happen. It is a good Show and is appreciated by all that come. In fact we have been bugged about sign-ups already, so we can launch the signing-ups as of this month. We are still asking a modest fee of \$20 per table when paid before December 1, and after that it will be \$40 per table. Current members only and send money. For those not familiar with the Show, we will detail it in future *Knewsletters*.

The summer picnic was a great happening again and was graciously hosted by Bernard Levine. This event has been going on for years, and the garden setting is relaxing along with the fellowship and talk about knives and things that go cut.

Club Knife... Roy Humenick has been working on another Great Eastern knife for our 2012 Club knife offering. The 2011 Great Eastern knife was awesome and good enough to do again but with yet another striking pattern. Dunno yet but Roy is working on it.

September 21 dinner meeting will resume again at the Sizzler getting there twix 5 - 6 for dining and for our meeting at 7 PM.

This months Smile Knife.... Pages one and two should say it all. Have fun smiling and send in your knives that will make us all smile.

Free Knewsletter ads.... we have weeded out the ads as best we could for this issue. These ads are free to members; and, from the past history, they seem to often get results. Email or paper mail your ads for inclusion in the next *Knewsletter*. And did you ever pay attention to what the materials are that you can't use to send in your ads?



Only a few people have caught this over the many years I have been doing this silly thing.

Nook Book... We have a Barnes and Noble color Nook which, aside from being a nifty reading tool, has now become a portable library for my collectibles. I photograph almost all of our collection of knives and have pdf files of these knives. I found that I could port these files into the color Nook and carry them with me to shows and for show-n-tell. The scout/utility collection is so huge that I now can compare duplicates and quality of knives we have while in the field. Just an idea for those who are able to do this type thing.



Knife Shows There has always been this talk about the Internet and eBay as far as purchasing knives. The notion is that why go to knife shows when you can shop from home. I have used the Internet for shopping but more often than not have been disappointed in the items I receive. If I can't touchy-feel an item, it is like buying a pig in a poke. 'caveat emptor'

A knife show allows one to have a personal touch with the items, vendors and makers. It is a cultural interchange of people with the same likes and interests. People do business with people, but the sterile interface of the internet just ain't the same. Best of all, right after interaction with a person, is the ability to get a first hand education from those who really know. I avoid forums and writing streams where people extol their more than often false and inaccurate knowledge and made up stories. Looking another in the eyes more than often allows one to sort out fact from fiction. And then again one can get a second opinion with real material and hands on touchy-feely. There you have it. See you at the December 10 Mini Show and the April 13- 15 Oregon Knife Show.



A Visit to the Opinel Museum

Bob Miller

There are signs along the major highways in France illustrating local attractions – castles, spas, cathedrals and such – and on the main road between Grenoble and Milan, there's a sign with a picture of an Opinel knife. The sign is there to tell passers by that they are near the Opinel Museum.

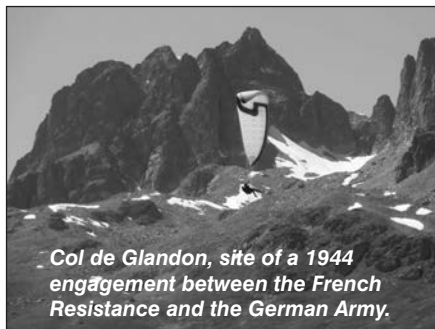


Bob & Sheree
in front of the Opinel knife at
the entrance to town.

It seems like everyone in France carries one of those simple knives, most of which have wooden handles and a locking ring at the base of the blade. So we were surprised to hear from a friend that carrying such a knife is in fact forbidden in France, as is carrying any knife with a

mechanism that can lock the blade open. This feature evidently makes the knife into a weapon. Suggesting that a knife is a tool, and a locking mechanism is a safety feature for the user, is met with the usual Gallic shrug.

So having seen the sign on our way to Italy last fall, we knew we had to visit the Opinel Museum; and we finally got around to it a few weeks ago. The museum is in the small town of St.



Col de Glandon, site of a 1944
engagement between the French
Resistance and the German Army.

Jean de Maurienne, high in the Alps, about 65 miles from Grenoble. It takes about an hour by the fastest route; but it's more fun to go over the high passes, especially if you have a motorcycle. That takes a bit over two hours and takes you through some truly spectacular country in the high Alps, with views of Mont Blanc in the distance. The scenic route took us through Col de Glandon, a favorite of paragliders, and one of the most difficult of alpine passes for bicyclists – the Tour de France comes through here fairly often.



Bob & Sheree as they
enter the Opinel Museum.

Here we are at the museum, near the center of town. The museum is small but welcoming. Just inside the entrance is a historical exhibit, with panels describing the making of knives in the Alps back to prehistory. There are also old machine tools, originally driven by belts that

connected to a water wheel. There were various tools for shaping, stamping and grinding the blades, including a 250kg hammer.

Some of the stools on which the workers sat were suspended from

the ceiling. There was also an ingenious lathe-like device specially designed for shaping the handles. There's a virtual tour on the museum website www.opinel-musee.com.

From that room, the next stop is a short video (in French), much of it narrated by the grandson of Joseph Opinel, describing the history of the Opinel knives and the way they are manufactured. Joseph Opinel opened the first factory in 1911, the site of the museum. According to the video he did so against the advice of his father. He chose the site for its proximity to water power, among other things. Sometime in the 1920s he moved the factory to Cognin near Chambéry in the Alps, in the department of Savoie, in the southeast of France. The present factory is in Chambéry.

We don't know if it's possible to visit the factory, but the video gives a nice tour that follows the manufacturing process from beginning to end. The blades are formed and tempered, then heated again. The handles are formed and finished in another factory nearby. The process is highly automated, with the final fitting done by hand.

The tour ends in the factory store.



Here is our collection of Opinel knives, just the ones we've bought in France. Left to right:

- 1: A # 2: knife, the smallest they make. The largest is very large indeed, far too large to fit in anyone's pocket, but still a functional knife.
2. The Annecy Olympic knife, produced to promote Annecy's bid for the winter Olympics in 2018.
3. An Opinel with a carved handle in the shape of a marmot, bought at the factory store. We chose that over the wild boar. (sanglier, pronounced sawn glee ay, in French) When we visited there were a number of works of local woodcarvers. You can buy the blanks, ordinary Opinel knives with the butt end of the handle enlarged to about twice the size of the regular handle, if you want to try your hand at woodcarving.
- 4,5: Two examples of the Animalia series, with wild boar engraved on the handle.
- 6: The Tour de France edition, with cycling scenes engraved on the handle and blade.
- 7: The Christopher Columbus edition with engravings of ships on the blade.
- 8: The Checkmate series, with stainless blade and ebony handle.



OREGON KNIFE COLLECTORS ASSOCIATION

BOX 2091 • EUGENE, OR 97402

MEMBERSHIP APPLICATION AND SHOW TABLE CONTRACT

PLEASE RETURN THIS ENTIRE PAGE or a photocopy. DO NOT CUT IT UP!

Name(s) _____

Mailing Address _____

City _____ State _____ Zip _____

Phone: Eve (_____) _____ Day (_____) _____ Date _____

Collector Knifemaker Dealer Mfr./Distrib. Other _____ Email _____

OKCA membership includes knewsletter, dinner/swap meetings, free admission to OKCA shows.

____ Start/ ____ Renew my/our OKCA membership (\$20 individual/\$23 family) \$ _____

37TH ANNUAL OREGON KNIFE SHOW • APRIL 14-15, 2012 425 — 8'x30" TABLES

Exhibit Hall, Lane Events Center and Fairgrounds, 796 West 13th Ave., Eugene, Oregon.

For Information Contact Show Chairman: Dennis Ellingsen, (541) 484-5564

AUTOMATIC RESERVATIONS: If you had a table at the 2011 Show, you have an automatic reservation for the same table in 2012, but THIS RESERVATION EXPIRES DECEMBER 15, 2011. You may still apply for a table after this date, but we cannot guarantee a table after December 15. NO RESERVATIONS HONORED OR APPLICATIONS ACCEPTED WITHOUT FULL PAYMENT! Note to NEW exhibitors: your table(s) will be assigned after 12/15/11.

ALL TABLE HOLDERS AND VISITORS agree to abide by the OKCA show rules, and to hold the OKCA, its officers, and the Lane Events Center harmless for any accident, loss, damage, theft, or injury.

ANY QUESTION OR DISPUTE arising during the show shall be resolved by the Show Chairman, whose decision shall be final.

THIS IS A KNIFE SHOW. All tables must be 90% knives or knife related items (e.g. swords, axes, edged tools, edged weapons, knife books, knifemaking supplies). If in doubt, check with the Show Chairman ahead of time. The OKCA reserves the right to bar any item from display or sale. No firearms made after 1898 may be sold or shown at this show.

ALL EXHIBITORS are required to keep their tables set up throughout the public hours of the Show: 8 AM Saturday to 3 PM Sunday. ANY EXHIBITOR WHO LEAVES OR COVERS THEIR TABLE BEFORE 3 PM SUNDAY FORFEITS HIS FUTURE RESERVATIONS AND WILL BE DENIED TABLES AT FUTURE OREGON KNIFE SHOWS.

DISPLAY TABLES will be around the perimeter of the room. All displays are eligible for display awards, which are handmade knives donated by members and supporters of OKCA. Display judging will be by rules established by OKCA. Special category awards may also be offered. **NOTHING MAY BE SOLD FROM DISPLAY TABLES.**

SALE/TRADE TABLES Sharing of tables will not be allowed. Exhibitors must comply with all applicable local, state, and federal laws. Oregon has NO SALES TAX.

BADGES: Each table holder is entitled to one additional show badge. **NO EXCEPTIONS.**

KNIFEMAKERS who are present and are table holders at this show may enter knives in the knifemaking award competition.

FOR MORE INFORMATION on categories and judging criteria in the display and handmade knife competitions, contact the Show Chairman.

SHOW FACILITATORS will be provided by OKCA from 10AM Friday until 4 PM Sunday. However, exhibitors are responsible for watching their own tables. Neither the OKCA nor the Lane Events Center will be responsible for any loss, theft, damage, or injury of any kind.

CITY AND COUNTY REGULATIONS require that there be:

- No Smoking within the Exhibit Hall at any time;
- No alcoholic beverages consumed within the Exhibit Hall during the public hours of the show;
- No loaded firearms worn or displayed at the show;
- No swords or knives brandished or displayed in a provocative manner.

Violators of these safety rules will be asked to leave.

NOTE ON SWITCHBLADES AND DAGGERS: In Oregon it is legal to make, sell, buy, or own switchblade knives. However, it is **ILLEGAL** to carry a switchblade knife, a gravity knife, a dagger, or a dirk concealed on one's person, or for a convicted felon to possess a switchblade or gravity knife. Most other states have banned switchblade knives. Under federal law, it is **ILLEGAL** to mail, carry, or ship a switchblade or gravity knife across state lines.

The Oregon Knife Collectors Association is not responsible for force majeure.

SHOW SCHEDULE

Friday, April 13, 2012.

10am - 7pm set-up; open ONLY to table-holders and members of OKCA.

Saturday, April 14, 2012.

7am-8am set-up. 8am-5pm open to public.

Sunday, April 15, 2012.

8am-9am set-up. 9am-3pm open to public.

Tables that are cancelled will revert back to the OKCA. Subcontracting tables is not permitted.

EXHIBITOR CONTRACT: PLEASE ENCLOSE FULL PAYMENT WITH THIS FORM. Full refund granted if reservation canceled by February 15, 2012. **DON'T GET LEFT OUT!!! MAIL THIS PAGE AND YOUR CHECK TODAY.** A signature is required.

Type of knives on your tables _____

Name for second badge _____ (two badges per table holder)

Qty _____ Club Dues (Total from above)..... \$ _____ **NO EXCEPTIONS**

Qty _____ Sale/Trade table(s) @ \$95 each (members only) .. \$ _____

Qty _____ Collector Display table(s) **free with sale table:**# _____

Qty _____ Collector Display table(s) w/o trade table @ \$60 each \$ _____

TOTAL ENCLOSED (make check payable to O.K.C.A.) \$ _____

I have read and agree to abide by the OKCA show rules as set forth in this contract, and to hold the OKCA, its officers, and the Lane Events Center harmless for any accident, damage, loss, theft, or injury. **Signature and date required.**

Signature _____ Date _____

*** PLEASE RETURN THIS ENTIRE PAGE or a photocopy. DO NOT CUT IT UP!***

www.oregonknifeclub.org

Identifying Different Kinds of Ivory

DanWestlind

I could not tell you how many times over the years I have had someone come up to me and tell me they had a huge walrus tusk; but after I see it, it turned out to be a small elephant tusk. I even had a guy bring me several walrus oosiks and told me he bought them in a gift shop in Alaska and swore they were genuine walrus ivory tusks. He got very insulted when I told him otherwise, since he knew what he bought and I was wrong. O.K., I have a bridge back in New York for sale, you interested?

Most people, especially knifemakers, know what different ivories are since we work a lot of it; but every once-in-awhile something comes along that someone is not too sure about. I have a small elephant tusk tip that at first glance resembles a walrus tusk. Elephant tusks are normally almost round or slightly oval shaped; whereas walrus tusks are rarely ever close to being round, normally rather flat, or have one side that is close to being flat. The other ivory that is difficult to identify is from a hippo. Hippos have tusks in both upper and lower jaws. The ones in the lower jaw are the most common. The larger tusks have a distinct C shaped curvature; the smaller diameter tusks are straight and round and are commonly referred to as peg tusks. The peg tusks can be large. I have seen some close to 18"-20" long and 1-1/2" diameter and look like elephant tusks.



From left to right: Hippo peg tusk, Elephant tusk and Walrus tusk.

The common, distinct feature with hippo tusks is that the outside of the tusks have a slight fluted texture most, if not all, the way around. They are the only tusks that have the fluted appearance.

When the tusk has been cut and you can see a cross section, it is very easy to identify walrus from elephant as elephant is solid with a cross grain pattern called Schreger Lines. Schreger Lines only exist in the Proboscideans: elephants, mammoths and mastodons. The cross section of a walrus tusk is totally different in composition. Walrus tusks have a very thin layer of enamel, like most teeth; but it is usually worn away in older tusks, especially fossil ones. The next layer is primary dentine; and the most distinct feature of a walrus tusk is the secondary dentine which is called the core, only found in walrus ivory. The core can be quite large or rather small and, in rare cases, almost non-existent.



From left to right: Walrus tusk, Elephant tusk, Hippo 'peg' tusk, Hippo tusk, Warthog tusk, Warthog tusk and Warthog tusk.

Tusks from a male walrus normally have larger secondary dentine whereas tusks from a female have smaller secondary dentine. Knifemakers prize the female tusks because of this. Interestingly enough, so did the Eskimos. Most of the artifacts I have studied over the years were made from female walrus tusks. I believe this is because of the strength of a female walrus tusk. It has a higher tensile strength than the same size male tusks which have a larger secondary dentine section. Male walrus tusks weigh less than the same size female tusks because the secondary dentine is more porous and not near as dense as the primary dentine. I personally like the texture of the core, or secondary dentine, although it has a tendency to warp easily. Another interesting feature found on fossil walrus tusks is that, even though the secondary dentine or core is porous, it does not absorb color as easily as the primary dentine on the outside.

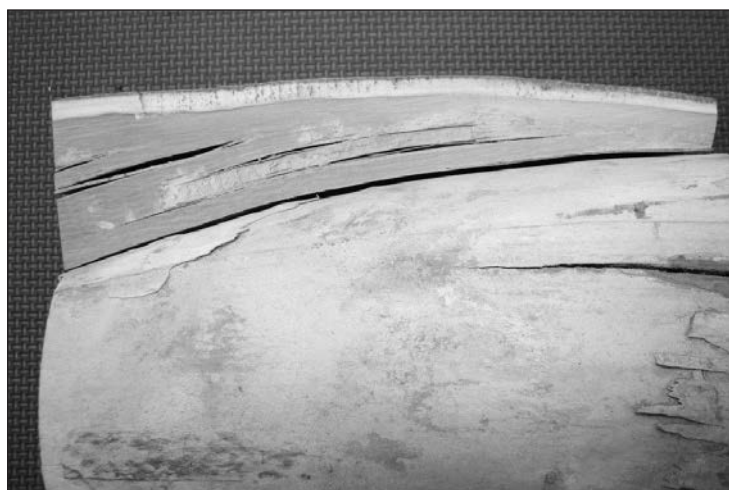


The tusk on left is an elephant tusk showing the Schreger lines. The tusk on right is a walrus tusk showing the primary and secondary dentine.

Now, getting back to the Schreger Lines in elephant and mammoth ivory. Tests were done years ago, and it was found that the outer Schreger Lines on elephant tusks were identified as having a cross hatch pattern, and the intersecting lines were found to have an average angle of 115 degrees or more; whereas the intersecting lines on mammoth tusks had angles of 90 degrees or less.

The most difficult thing I have trouble identifying is the handle material on older knives. Many antique knives were thought to have ivory handles, but upon closer examination, were found to be bone. Bone has pores in it, ivory does not. Look at the handle with a magnifying glass, and you may be able to see the pores. Sometimes, very few pores, sometimes, lots of them. If no pores are present, then there is a good chance it is ivory.

In some early cultures, horse shin bone was the most desired handle material; and I have a couple very old, original bronze daggers from ancient Luristan (Iran and Iraq) that still have the original horse bone handles on them, after several thousand years. Another interesting observation, when looking at Middle Eastern weaponry from Turkey and the surrounding area, was the abundance of walrus ivory on the old swords and knives. Now I know there were no large herds of walrus floating on ice in that region, so the walrus ivory was brought in by trade ships and was highly prized by the craftsmen in that region. Well, I hope you are all experts at identifying ivory now, so the next time someone tries to sell you an oosik or a horse leg, you'll know the difference!!



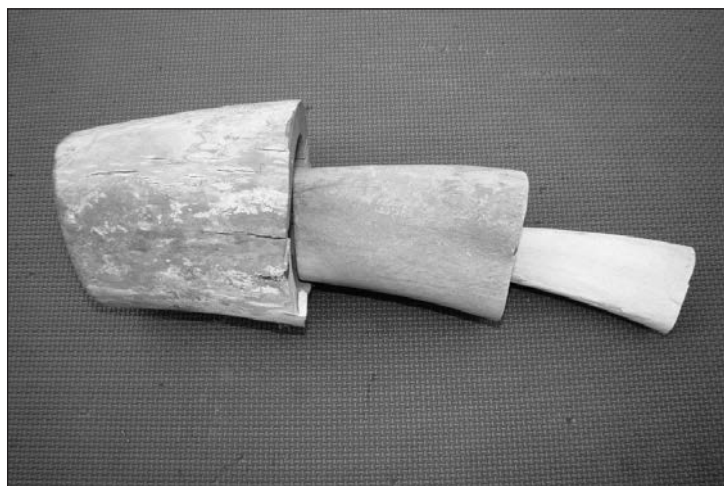
This illustrates the taper in the growth rings, along with the outside bark which grows straight.

Now another problem people have is trying to figure out how to cut mammoth ivory as it is way different than elephant or walrus in the way the tusks form when they grow. The easiest way to describe the growth pattern is that mammoth tusks, when cut open longitudinally, look like a stack of Dixie cups, in other words a bunch of tapered sections stacked on top of each other. In one of



This view shows the tapered sections loose from each other. Note: not all mammoth ivory comes apart to this degree, this is an unusual piece, but it represents the growth pattern the best.


the photos you can see the tapered sections, and in the other photos where the tapered sections have delaminated and come apart. The very outside layer which we call the bark grows straight the whole length of the tusk. It can be cut off to yield knife scales or whatever else it is going to be used for.



This picture shows the interior sections which have de-laminated, coming apart, showing the tapered growth pattern.

If we continued to cut the rest of the tusk (if it has ring cracked or separated as shown in the photos) in the same manner as the bark, we end up with a bunch of tapered, shorter pieces. In order to get thicker, longer pieces, we try to separate the sections into cones (as shown in the photo) and then cut the cones into the desired width and length we wish to get out of the piece. The larger percentage of mammoth ivory has ring cracks and de-laminations, but not all. I have seen a lot of mammoth ivory that looks like elephant ivory and is solid enough to cut just like elephant ivory.

I remember years ago getting a mammoth tusk section from Siberia, and it was so solid that I cut slabs out of it that were 5" wide and 8" long with no cracks. That was a rare piece and I have not seen another piece that large and solid since, but I know it is out there. The problem with mammoth ivory was that it seems that in North America the animals died and their flesh and bones deteriorated away. The teeth and tusks, being much denser, remained but they also weathered. Freezing and thawing constantly in the winter and the sun heating them up in the summer caused the tusks to deteriorate. If the tusks somehow got buried right away and were not exposed to the weather, then the ivory had a better chance to survive in its original form; and when we find it, it is in better condition. I have seen what we call glacier tusks that look like they fell into water and froze and ended up in a glacier; and when found, they are snow white. Since they had never been in contact with the ground, they could not absorb any color. These are quite rare, and I have only seen a few in all the years I have dealt with mammoth tusks. On the other hand, I have seen tons of mammoth tusk material that the large gold dredges in Alaska chewed up and spit out when they were dredging gold years ago, and this material has been exposed to the elements for some period of time and resembles the color, thickness and value of wet, gray cardboard. Well, I hope this explains the way the mammoth tusks form and the cutting methods needed for a higher yield.

Much of this information came from the U.S. Fish and Wildlife website. 

The Seek-re-tary Report

by elayne

The first meeting of the new year will be September 21. During the summer months, we continued to have a group dinner at the Sizzler on the third Wednesday of each month, our regular meeting date, but had no meeting. We were surprised at the attendance. We also had a group get together in July at Bernard Levine's home. Thank you, Bernard, for your hospitality.

The December show will be December 10, 2011 at the Lane Events Center in the Pavilion Building. The table cost is \$20.00 prior to December 1 and \$40.00 after December 1. If you wish to reserve a table, please forward payment to the OKCA, P O Box 2091, Eugene OR 97402. No application form is necessary.

The deadline for reservation for your 2011 table for 2012 is December 15. There is an application in this *Knewsletter* or an application is available on the website. Please be sure to list the additional name for a table-holder badge (two badges per reservation). You must be a current 2012 member to be assigned a 2012 table.

Please check your label for your expiration date. If you believe I am in error, please contact me - phone (541)484-5564 or email (elayne@oregonknifeclub.org), and I will check the records.

See you at the meeting Wednesday, September 21, at the Sizzler Restaurant, Gateway, Springfield OR.



Elephant Toenails

Mike Squyer

I moved my family from Marin County to Sacramento CA in mid 1970s. Here in Sacramento I started my education in knives. Some of my teachers in those days were Art Moore, Jack Stead, Don Andringa and later on Mike Silvey; all members, or former members, of OKCA.




In the beginning of my collecting, I had heard of elephant toenails and that they were very desirable and quite expensive. One morning I was taking my one mile exercise walk and came upon a garage sale. The man having the sale was our local butcher, so I asked him if he had ever run into an elephant toenail knife. He replied, Wait right there, as he went into the house and came out with a very nice Barnsley Bros. Knife and gave me this story. (There is always a story with a knife.)

In his youth he was an ambulance driver while attending junior college in Minneapolis MN. He was called to a rough bar on the waterfront frequented by

bargemen where a fight had broken out with knives. With the help of the bartender, he got both strapped onto a gurney and into the ambulance, when the bartender said, Wait a minute, this knife belongs to one of them. The driver washed the knife and dried it before placing it in an evidence bag. The driver drove both to the hospital. Both bargemen died later. The ambulance driver had put the knife in an evidence bag in a police safe at the hospital to be held as evidence. About a year later he gets a call from the police to come pick up the knife as there was no other claim. The driver was very happy he had cleaned the knife. I paid a whole \$50 for the knife.

I bought my second knife from a tug boat captain I knew who worked pushing barges up the Sacramento River, the Delta and San Francisco Bay. He had retired and no one in his family wanted the knife, so I bought a very nice Cattaraugus elephant toenail for \$65.

My third knife came from a local flea market. A thirty-some young man had a toenail on his table. I asked him if he was a bargeman; and he said, no, his uncle, who was a bargeman from Alabama, gave him the knife. He said it was too heavy to carry in the pocket, and that is why he was selling it. He wanted a whole \$30 for it in 1977. It also was a Barnsley.

This brings me to the present with my new Northfield OKCA 2011. It looks so new compared to my three oldies. 

Bernard Levine and his summer picnic.



On July 27 a group of knife people with hearty appetites was treated to a picnic in the garden of Bernard Levine. The cuisine was oriental and it was great. The attendees also brought desserts and salads that made it a cap off to a wonderful time. Show and tell was casual and was all hands on. I think we have been having this event for the last ten years or so. When you are having fun, who keeps score?





OKCA Free Classified Ads

Free classified ads will run up to three issues and then be dropped. Available only to paid members. Write your ad on anything you have handy (except wiffle balls) and email or snail mail to the **OKCA, PO Box 2091, Eugene OR 97402**. The number and size of ads submitted by a single member will be accepted, or excepted, dependent on available space and the mood of the editors.

Knifemaker Downsizing Sale -Vises, electric motors, hammers, handle and blade materials. Small older table saw, two vacuum pumps suitable for a stabilizing outfit. Piles of interesting junk plus a large free pile. Call for an appointment, ask for Wayne (541)689-8098

HOT OFF THE PRESS - 2ND edition *The Wonder of Knifemaking* by Wayne Goddard, revised and in color! \$30. shipped by priority mail. Get your autographed copy now by calling Wayne at (541)689-8098

For Sale older knives. Please visit HHknives at www.allaboutpocketknives.com. Thanks for looking.

For Sale - Keen Kutter folding knives. Two diamond edge knives by Shapleigh Hdw Co. One E. C. Simmons Hardware Co St Louis MO straight razor in original box. Call Martin (406)442-2783 or cell (406)422-7490 for free photos and knife/items description and price list.

For sale - OKCA Club knives. Schrade Lake Walker 2002 - Harsey Air frame 2001 - Contact Maynard Meadows (541)935-3622.

Ellis 12-VT Forge Body, perfect, little used. Lined, ready to go. \$200.00. Bend OR.
knives@threesistersforge.com (541)382-7388

For Sale: Item #1 WWII Case v 44 all original WWII. Blade is full and has some sharpening on the edge but lightly. Has lots of original polish, no rust stains or darkening. It comes with the original WWII leather sheath. no stains, still lite in color, lite tan, cross guard has nice dark brass color not polished, its black handle is exc., no chips, a very nice set. \$ 475.00 post pd.&ins.
Item #2 WWII M 8 scabbard for U S M3 has short belt loop & no hanger hook has its original leather tie down lace. Over all very good plus condition \$100.00. M Ferris P O Box 250 Clayton CA 94517 (925)672-4382 - email md1ferris@aol.com

Knife Sheaths..... Many, many different sizes and styles. If you need a new sheath for that favorite knife of yours, bring it to the Mini Show and find one at our table. If we don't have what you want, we can make it for you. Ray Simonson Wild Boar Blades P.O. Box 328 Toutle, WA 98649 (360)601-1927 www.wildboarleather.com - ray@wildboarleather.com

Wanted-Any information available relative to a soldier/sailor who scratched the following info onto his Kingston military issue pocket knife "D. N. Hubbard OCT 3, 1945 -Lipa, Luzon - Phillipine Islands" I would like to locate this serviceman or his family and present this knife to them as a memorial to his service. Please respond by email to rabonpville@yahoo.com or by snail mail to Ray Roe, 1007 Pine Creek Dr., Pflugerville TX 78660. Call at (512)251-0805.

Wanted -Knives and also ephemera and information about Bruckmann knives. Bob Patrick 816 Peace Portal Dr., Blaine WA 98230 (604)538-6214 bob@knivesonnet.com

Wanted -Knives made by Stan Shaw. Ephemera also wanted in the form of pictures, articles, parts, business cards etc. Bob Patrick 816 Peace Portal Dr., Blaine WA 98230. (604)538-6214 bob@knivesonnet.com

For Sale- Duplicates from my collection of wood handle Coke knives, small size (3-1/2"/+/-), large size (5-1/4"/+/-) or trade for ones I do not have. Only wood handle knives, please. Ron Edwards, email me @ ronjoyceedwards@comcast.net

Mosaic pins and lanyard tubes by Sally. See at www.customknife.com, email at sally@customknife.com. Phone (541)846-6755.

Blades and knifemaker supplies. All blades are ground by Gene Martin. I also do custom grinding. See at www.customknife.com, contact Gene at bladesmith@customknife.com, or call (541)846-6755.

USEFUL REFERENCE BOOKS ON BLADES- Collectible knives, custom knives and knife making, military knives, swords, tools, and anything else that has an edge. E-mail for a list. As our name implies, if we dont consider a book to useful and a good value we will not sell it. **QUALITY BLADE BOOKS**, C/O Rick Wagner, P.O. Box 41854, Eugene OR 97404 (541) 688-6899 or wagner_r@pacinfo.com

WANTED: OKCA Club knives serial numbered 16. Need 1992 Gerber FS11989 Cripple Creek----1987 Al Mar Tanto1983 Gerber Paul1981 Gerber Gentleman Jack LST---will give \$100.00 for any 1980 Club Silver Knight. Fred Coleman (541)915-6241

Wanted: 1997, 1998, 1999 and 2000 OKCA silver medallions. Heceta Lighthouse, Oregon Beaver, Multnomah Falls and Mt. Hood. Call Jim (562)716-9857 or email:jpitt306@earthlink.net.

Knife Laws on-line. Federal, state, local. Bernard Levine (541)484-0294 www.knife-expert.com.

For Sale: Made in France. Ready to blue or polish. Heavy 1095 French drop forge patch knife blades- 5 assorted- 2-1/2 to 3-3/4 plus strong rod tang. Pre hand shaped. You just sharpen and handle with stag or branch wood. Then sharpen as you will (5 blades) including shipping \$33.00. Visa/M/C/AMX. Sorry no pictures. 100% satisfaction. Club member Elliott-Hilty Diamond 6060 E Thomas Rd Scottsdale AZ 85251 (480)945-0700 Fax (480)945-3333 usgrc@cox.net

Wanted: SEGUINE Knives -Please call Jack at: (805)431-2222 or (805)489-8702 -- email:jh5jh@aol.com

Randall Made Knives. Buy, Sell, Trade. Also a good selection of Case knives, and many custom knives for sale or trade. Jim Schick www.nifeboy.com (209)333-1155.

The views and opinions implied or expressed herein by authors and advertisers are not necessarily those of the Oregon Knife Collectors Association, its editors, or its officers; and no responsibility for such views will be assumed. The OKCA, its officers and its editors assume no responsibility for claims of advertisers for the quality of goods and services the advertiser provides. The act of mailing or delivering a manuscript or advertisement shall constitute an express warranty on the part of the contributor that the material is original and in no way an infringement upon the rights of others. The act of mailing or delivering a letter or question to the editor shall constitute permission to publish the letter or portion thereof unless the Oregon Knife Collectors Association is informed otherwise in that letter. This Knewsletter is devoted to the general interest of the knife community and does not include personal information such as births, deaths and illness. We also strive to use only material that is directed to the world of cut. Our charter mandates that our mailing list of the membership cannot be sold or used by other than the Oregon Knife Collectors Association.

OKCA Club Whot-zits & Whos Zits

Darrold (Ole) Olson
President (541) 285-1412

John Priest
Vice President (541) 517-2029

Elayne Ellingsen
Sec/Tres. (541) 484-5564

Craig Morgan
Master at Arms (541) 345-0152

Dennis Ellingsen
Show Coordinator (541) 484-5564

Knewsletter by elayne & dennis

Web page <http://www.oregonknifeclub.org/>

Club email okca@oregonknifeclub.org

OKCA
PO BOX 2091
EUGENE OR 97402
(541) 484-5564

Copyright (C) 2011 Oregon Knife Collectors Association. No part of this Knewsletter may be reproduced without permission of the OKCA. Email info@oregonknifeclub.org. Layout and printing by Insta-Print - 1208 W. 6th - Eugene, OR 97402 - Phone (541) 686-8591



The Knewslettter

Oregon Knife Collectors Association
PO Box 2091
Eugene, OR 97402

Cutlery Events Calendar

September 2011

- Sep 16-17 - AECA Show-Oak Lawn IL (KW-B)
- Sep 16-18 - Knifemakers Guild Show - Louisville KY (KW-B-TK)
- Sep 24-25 - Lehigh Valley Knife Show - Easton PA (KW-B)
- Sep 24-25 - Branson MO Knife Show (B)
- Sep 26-27 - Wolverine Knife Show - Clawson MI (TK)
- Sep 30-01 - Northern Lakes Knife - Janesville WI (KW-B-KI-TK)
- Sep 30-01 - NKCA -Louisville KY (KI)

October 2011

- Oct 01-02 - The NorthWest Knife Collectors - Kelso WA (KW-B-KI)
- Oct 01-02 - Florida Knifemakers Show - Lakeland FL (KW-B)
- Oct 01-02 - Garden Grove CA Custom Knife Show - (KW-B)
- Oct 20-22 - Louisville Knife Show -KY (KW-B)
- Oct 21-22 - Ohio Classic - Cambridge OH (KW-B)
- Oct 21-23 - S.H.A.R.P. Show - Louisville KY (KW-B)
- Oct 28-30 - Kentucky Cutlery Show - Shepherdsville (KW-B-KI)
- Oct 28-30 - Boise Knife Show -Boise Idaho (KW-B-TK-KI)

November 2011

- Nov 05-06 - Mt Vernon IL Knife Show (KW-B)
- Nov 05-06 - Knives Illustrated Spirit of Steel - Knoxville TN (KI)
- Nov 18-20 - New York Custom - Jersey City NJ (B-TK)

December 2011

- Dec 08-10 - Parkers Greatest Knife Show - Sevierville TN (KW-B)

- Dec 10-10 - **Oregon Knife Collectors** - Eugene Oregon (KW)

January 2012

- Jan 06-07 - Helsinki Knife Show - Finland (KW-B)
- Jan 20-22 - Antique Arms Show - Las Vegas NV (B)
- Jan 28-29 - Gateway Area Knife Club - t Louis MO (KW-B)

February 2012

- Feb 03-05 - Gator Cutlery -Lakeland FL (B-KI)
- Feb 18-19 - Little Rock Arkansas Custome Show (B)

March 2012

- Mar 02-04 - East Coast Custom Show (B)
- Mar 09-11 - Dalton Georgia Knife Show (KW-B-KI)
- Mar 10-11 - Lone Star Knife Expo - Fort Worth TX (KW)
- Mar 23-25 - Knife Expo - Pasadena CA (KW-B-KI)
- Mar 23-25 - Badger Knife Show - Janesville WI (KW)
- Mar 23-25 - Salt Lake City UT Knife Show (KW-B-KI)

April 2012

- Apr 14-15 - **Oregon Knife Collectors Show** Eugene OR (KW-B)
- Apr 19-21 - Greater Cincinnati Knife Show (B)
- Apr 27-28 - Northeast Cutlery - Mystic, MA (KW)
- Apr 28-28 - Solvang California Custom Knife Show (B)
- Apr 28-29 - Wolverine Knife Show -Novi MI (B)

June 2012

- Jun 08-10 -Blade Show - Atlanta GA (B)

Contact Dennis or Elayne (541)484-5564 for additional information on OKCA events. For non-OKCA events, contact the sponsoring organization. Additional info = (B)lade Mag. -(KW) Knife World - (TK) Tactical Knives (KI) Knives Illustrated

DINNER MEETING



Wednesday Evening

September 21, 2011
Third Wednesday of the Month



Sizzler Restaurant
1010 Postal Way
Gateway area - Across from the Post Office

6:00 PM Dinner
Followed by meeting

Come Knife with us!
Bring a Show-N-Tell knife

