



# NEWSLETTER IN A KNUTSHELL



- ✓ The Dinner Knife
- ✓ Smile Knife
- ✓ Application for 2012 Show
- ✓ 2012 Club Knife
- ✓ Scherping
- ✓ Display Award Knives

Our international membership is happily involved with "Anything that goes 'cut'!"

## December 2011

### The Dinner Knife that's a Bowie B K Brooks

I love to look through piles of old kitchen and silverware cutlery at junk stores, as sometimes you can come up with a nice Civil War Bowie knife or even an Indian trade knife. When first collecting, I had seen the "cutlery" Bowie or, as I have been told, more correctly called "hollow handle" Bowie and wondered about their authenticity. Some guys at knife shows claimed they were made for meat carving at a dinner table and were never intended as hunting or fighting knives. Some said they were all fakes; and in one case the guy I knew who said they were all fakes I later caught faking them as he had a bunch of "hollow handles" in his bag we found when we were searching for another knife he had. He was only slightly sheepish about that, admitting he had cut them off some tableware with plans to "fix" them later.

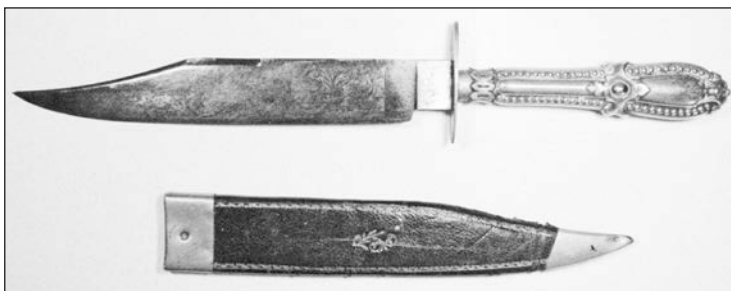
But as I learned more, read more books and talked to the experts, I found out that "hollow handle" knives are the real thing; but you do have to be real careful out there. Many beautiful examples can be found in various Bowie knife books with great examples in *The Bowie Knife Unsheathing an American Legend* by Norm Flayderman. I have been told by experts I trust that they were made in great profusion during the Civil War conflict as a very inexpensive Bowie, although there are some that are quite elegant and were costly at the time. Most are very flashy, poor to average construction and obviously quickly produced for the mass market. Patriotic etchings on the blade are quite common, and some etchings were also directed towards the gold strikes that were occurring during the mid-1800s. Their manufacture mostly petered out by the early 1880s if not before.

The handles looking quite similar to cutlery tableware (hence being quite commonly called "Cutlery Style" Bowie in many books), the hollow handle Bowie is just that; a hollow handle filled usually with Cutler's Cement. Cutler's Cement is a binding agent used to seal the handle to the blade tang. Research shows that it comes in varying recipes, one recipe I found calling for 4 parts of resin, 1 of beeswax, and 1 of brick-dust; while a more complex mix called for 1 part pitch, 4 parts resin, 4 parts tallow, 2 parts brick-dust, 4 parts beeswax and 1 part hot whiting. It is meant to glue the Cutlery Hollow Shell Handle onto the knife tang, which it does to a fair degree except on hot days which may cause the handle to gap or pull out from its original seating with the guard. I am told that a hot water bath can liquefy the Cutler's Cement mixture enough to re-position said handle back on.

The first example I had bought was a WRAGG & SONS 38 FURNACE HILL Bowie because it had a blade etch that said CALIFORNIA BOWIE KNIFE and the Gold Rush aspect interested me. Tweedale's *Directory of Sheffield Cutlery Manufacturers 1740-2010* states that the Furnace Hill Wragg & Sons (not to be confused with the Solly Street Wragg & Sons, both named John by the way), were in business perhaps before 1845 to maybe as late as 1857, but most likely expiring around 1852. Its ornate "Hollow Handle" was typical as they do not weigh much and are light in the hand.

This is not always the case. Some have heavier handles which concerned me, but talking it over with some respected experts at OKCA events I found that while uncommon they are genuine. It was "speculated" that some are maybe lead filled; and in some cases they are solid brass, not hollow handled at all, just made in that style (speculation as I have no desire to cut them open and see).

Other examples of the light handled "Cutlery Style" that I have seen include James Westa, Slater Brothers, Venture (which is a Slater Brothers trademark starting 1863 by eldest son Herbert Slater per Tweedale or 1853 per Goins'), A Leon, Alexander, Barnes & Sons, J. Lingard, to name a few.



WRAGG & SONS 38 FURNACE HILL



Top: J. Nicholson & Sons Sheffield  
Bottom: Thomas Short Junior Sheffield

# Friedrich Karl Lippert Hunting Knife by Bernard Levine

Excerpt from *Knife World's What Izzit* column, July 2010.

Mr. Brad Wonnacott sent in photos of a big handsome sheath knife.



The knife is about 15-1/2 inches long overall, with a 9-1/4 inch sabre-ground blade. The blade has a distinctive leaf-shaped false edge running about 5 inches back from the point.

The guard and pommel are silver-plated, sculpted in a modern minimalist style, yet dramatic in form like the blade. The handle is stag. The sheath is leather, with leather (not metal) reinforcing throat and tip. A line of stitch holes on the front indicates that there was originally a long pocket attached there, now missing.

The obverse ricasso is stamped SCHERPING/ HANNOVER. The obverse flat is stamped HANDGESCHMIEDT (hand forged). The reverse flat is stamped with the initials F K L. Someone converted the L into an angular C.

Researching online, after several false starts, I learned that this particular Scherping was a sporting arms retailer in the city of Hannover, Germany. The founder of the firm was Heinrich Scherping (1831-1913).



Circa 1862 Herr Scherping became Hofbuechsenmacher (court gunsmith) to the royal court of Hannover. This was a good gig while it lasted, but it lasted only four years. The royal court went into exile in Austria in 1866, but Scherping stayed in Hannover.

In my online search I found references to a variety of late 19th and early 20th century sporting arms marked Scherping / Hannover. Some

of these expensive private branded arms were identified as to their actual manufacturers.

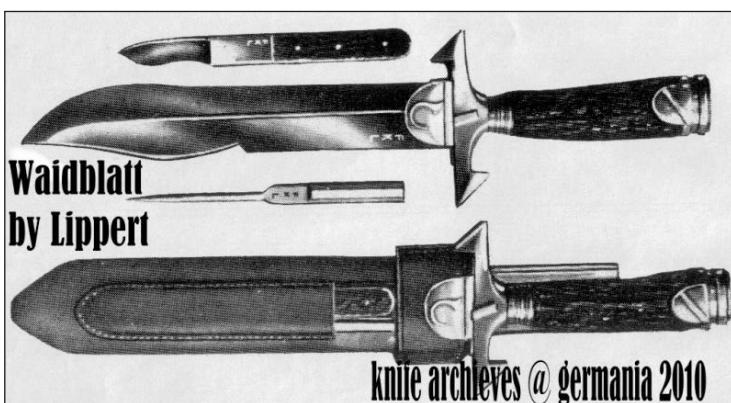
Evidently Scherping himself retired, because in 1897, the H. Scherping business in Hannover was owned by the brothers Heinrich (died 1929) and Johann (died 1928) Eckebrecht. The address was Grosse Wallstrasse 8. The company "H. Scherping, Hofbuechsenmacher, Hannover, Inh. (owner) Eckebrecht" still advertised in a 1937 Wild & Hund hunting journal. Evidently the firm did not survive World War II.

That was the background. The foreground came from a German web page dedicated to this very style of Waidblatt (hunter's blade), blankwaffen-ulrich.de/Hirschfanger\_Sabel/Page10308/Waidblatt1/waidblatt1.html and from Mr. Henning Ritter of Solingen.

F K L was Friedrich Karl Lippert (1894-1943), a native of Hannover. He was an artist, writer, and scientist, devoted to the appreciation and practice of hunting. He designed this knife, called the Lipper Ceechen Waidblatt, to be aesthetically pleasing, but above all to be effective at killing wild boar. He applied for a patent (DRGM) on the design, and received Patent No. 1393684, registered in Berlin March 12, 1936, for a term of three and a half years. Features protected by the patent included the distinctive S-style crossguard, called Wolfsangel (a traditional Hannover area heraldic mark), and the leaf style of blade. Also note the stylized hunting horn on the langet.

The knife was sold exclusively by Scherping of Hannover. That firm claimed to have manufactured it, as well, but I am skeptical of this claim, since Scherping was a retail store.

Mr. Ritter found a catalog illustration of the knife, showing the auxiliary tools that were included in the pocket. Note how the small knife's blade echoes the leaf shape of the large one.



Original Lippert/Scherping Waidblatts were only made briefly, in the late 1930s. Recently, Solingen bladesmith Willi Ulrich made two hundred tribute replicas. They differ in many small details from Lippert's design, so there is no chance of confusing a replica with an original.



# OKCA Knews and Musings

*ibdennis*

**The December Mini Show.....** Not long now. December 10. The number of tables requested is looking good and it appears to be an almost sold out Show. 7AM the doors open and the public is allowed in at 8AM. The show is open until 4PM. No one will leave or clear their table prior to that hour. I can recall many Mini December Shows that were great events, and I have reason to think that this one will be just as good. So come one, come all and share the day with some pretty sharp people and things.

**Toys-For-Tots...** For years and years our organization has supported the Toys-For-Tots program at our December Mini Shows. We are encouraging all to bring a new unwrapped toy for this program. When you enter the Show directly to your left you will find a table designated for these items. **Bryan Christensen** has led this event for many years and has put the call in for the Marines to come and pick them up during the Show. Show your support by bringing a toy to this event.

**Display award knives...** We have four knives in hand for the display awards. Thank you **Jeff Crowner, Jose' Diaz, David Kurt and Peter Pruyn** for your early completion. Go to the OKCA web site (Google OKCA for fast location) and go to the page linked in the left hand column to Award Knives. Black & White here but full colour there.

**Remember the label....** Your mailing label tells all in four little characters. 2011 means your dues are current until December 31, 2011. If you thought you had reserved a table for the April Show and the label shows 2011, then maybe you better double check to see that your reservations for the April Show have been made. The deadline for first right of refusal on tables is December 15.

**Club Knife... Roy Humenick** has come up with the final on the 2012 OKCA Club Knife. See elsewhere in this issue to get the details. We are hoping to have a facsimile knife at the December 10 Mini Show.

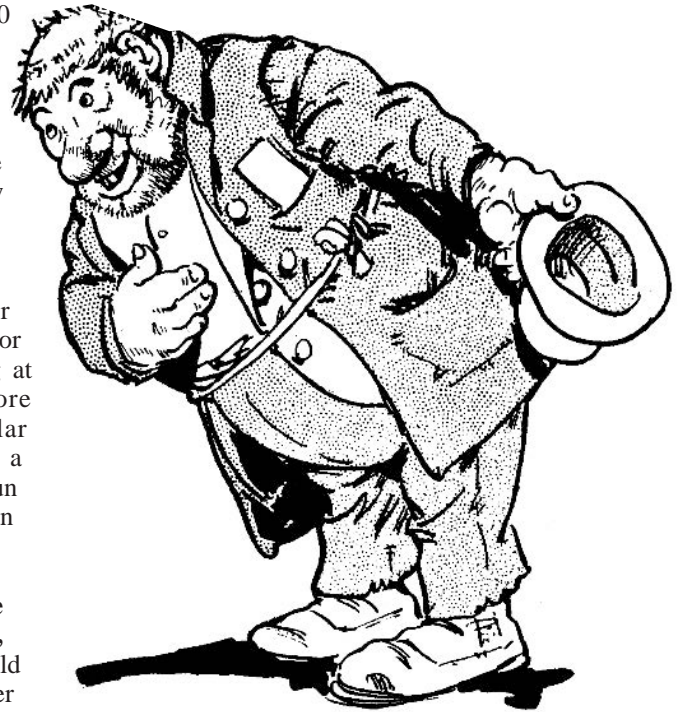
**The December Winter Mini Show -** We have for years wrestled with the name for the December Show. The first day of Winter is December 22. So it really is not a winter show. The term "mini" is relative. If you compare it to our 420 table April Show, then I suppose you could call it Mini. But then again there are many shows across the country that have big

shows which are around 100 tables. We are at this printing around 80 tables which is hardly "mini" in comparison. So I propose that we call this Show the December Winter Mini Show and forgive the 66% untruth.

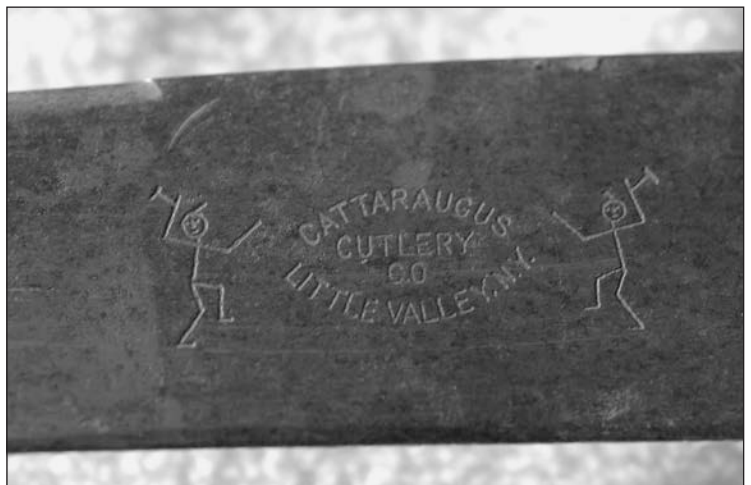
**December 21 dinner meeting** will at the Sizzler getting there twix 5 - 6 for dining and for our meeting at 7PM. This is just before Christmas but by popular demand we will have a meeting. These events are fun fun fun so "when" is not an issue.

**This month's Smile Knife.... Don Andringa**, recently purchased this old carving set knife and, after removing the many years of crud from the blade, was surprised to uncover the logo of a great old U.S. maker. He also got a good chuckle. **Mike Silvey** contributed this story.

**Our Website...** Have you let your fingers do the walking to our website of late? It is easy to find as our page comes up with a simple Google or



Bing search of "OKCA." Or if you enjoy typing "<http://www.oregonknifeclub.org/>" The site will tell you all aspects of our organization including Show information, applications, Knife Shows around the world, articles about knives, member links, things to do in Eugene and much more in the world of "cut."



## The Dinner Knife...(continued from page 1)

My first example of a heavy or perhaps even solid handle "Cutlery Style" is tang marked J. Nicholson & Sons Sheffield and measures a whopping 14 inches, the blade measuring 8-3/4 inches. What sets it apart is the design on the ornate, cutlery style, plated handle and the craftsmanship in its making. The handle has a very atmospheric fish or sea monster apparition on it, devouring another smaller fish in a lush growth of plants. Mark Zalesky (editor *Knife World*) advised me that it was a stylized 1850s representation of a dolphin eating a fish and noted such dolphins appeared on old maps at the time.

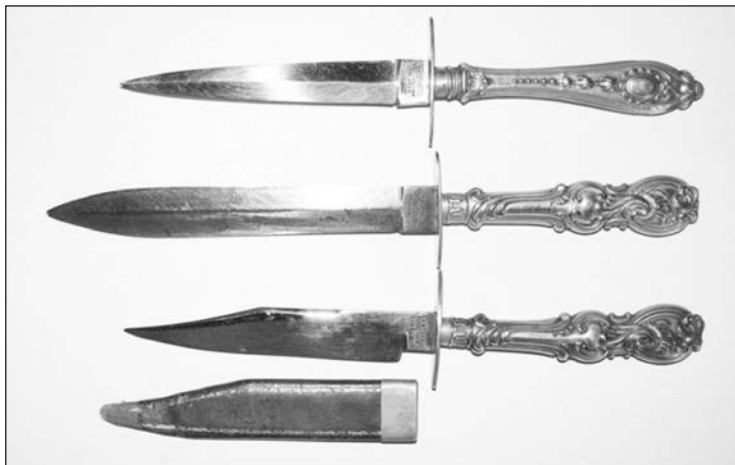
Tweeddale's *Directory of Sheffield Cutlery Manufacturers 1740-2010* noted this about J. Nicholson & Sons Sheffield. The company was first listed in 1849, made Bowie knives for the American market, including fine gold washed examples marked "Gold Finder" as well as "Good as Gold" and "XLENT." My knife has a faint blade acid etch that says: DRAW ME NOT IN HASTE. The J. Nicholson & Sons Company was dissolved in 1854 as a knifemaker.

I had never seen a similar dolphin handle despite reviewing my numerous Bowie books, collections and viewing websites. Then I stumbled on a highly similar knife being sold on eBay Australia described as a brass handled Bowie with a description "Chinese style dragon/seamonster devouring a fish (Golden Carp?)." Despite the

admonishments from some experts about beware the brass handled Bowies, I placed a bid and won.

I suspected upon receipt to see a worn handle with some signs of faded silver flecks from a plating process, but indeed it was brass handled as described. The blade had a faint acid etch: "A SURE DEFENCE" (no not defense). This etch jogged my memory and led me to Australian writer Kenneth J. Burton's book *A SURE DEFENCE*. The blade tang was stamped with the maker THOs SHORT JUNR which I determined through Burton's

book to be Thomas Short Junior of Sheffield who had manufactured Bowies with "FOR AUSTRALIA" acid etched on their blades. My Thomas Short Junior Bowie's clip blade was just shy of 8 inches and measured about 13-1/2 inches overall.



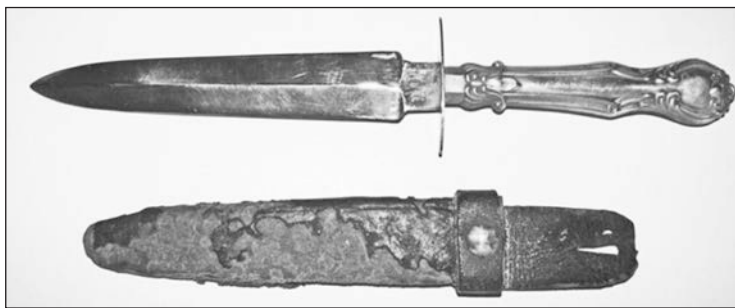
Top and Middle: VENTURE SLATER BROTHERS  
Bottom: A. LEON

At first appearance the handles seemed to be the same, but on close inspection there are many slight differences (note photos).

The THOs SHORT JUNR tang stamped knife handle is slightly shorter, has a hidden but rough seam down it compared to the Nicholson that is seamless, of better trim and more delicate fit. Differences in the plants and the fish being devoured are easily spotted. It became clear the handles were not from the same cast mold, one smaller than the other. There is no question it is most likely solid brass but in the cutlery or "Hollow Handle" style. I have been advised it has become evident that the Sheffield trim manufacturers copied each other all the time. An example being "Liberty & Union" guards, there are several different variations of them and often the differences are very subtle.

Which now leads us to the question of fakery of "Hollow Handle" knives. The copying of handles or guards may not be fake if done by the various Sheffield trim makers of the time, but surely the knife seller I met that had "Hollow Handles" taken from tableware with the intent to join them to knife blades of old or perhaps even new construction in order to pass such off as a "Civil War" knife is unquestionable deception of the worst order. *Levine's Guide to Knives and Their Values* has a section about fakes in his first chapter which I suggest any collector should read. Also I want to review a knife that I have that while maybe not a fake makes one scratch one's head. Carving knives have a distinct style and shape, but let's review the photo I have of a G. WOSTEMHOLM & SON cutlery knife I have. The blade is of classic clip blade Bowie style. The tang is marked IXL. Yet the guard is an obvious dinner serving pattern, and the handle does not engender what you typically see for "Civil War" hollow handle knives. The biggest clue is it is marked Sheffield England which puts it post 1890. While not necessarily a "fake" (reviewing its construction it appears not to have been a faker's marriage), it may have been the company putting these together in tough times as a dinner knife that looks deceptively close to what you are looking for.

Armed with knowledge and with an eye for detail, finding Cutlery or Hollow Handle style knives can be done without being burned. Keep to your instincts that everything fits, speaking of authenticity, while keeping your desire to get a nice looking example or a good deal in check. I have personally backed off purchasing one manufacturers marked beautifully delicate hollow handle Bowie based upon seeing too many perfect mint examples of the same knife at a large show at different dealer's tables. Go with your gut instincts and happy hunting for these pieces of history. 🗡️



James Westa DCL



G. WOSTEMHOLM & SON SHEFFIELD ENGLAND

# Oregon Knife Collectors Club Knife 2012



The Great Eastern Cutlery Whittler is this year's Oregon Knife Collectors' 2012 Club Knife. A picture of this knife is shown here but might be modified moderately. The knife will be in the style and fashion as all our Club knives.

The handles will be burnt stag with a one-of-a-kind beaver shield. The knife will be marked Northfield which is their premium line. The length is 3-1/2" and the three blades are 1095. The main blade will be a clip blade with a pen and a coping blade on the other end. The total of 50 knives will be serial numbered and will come in the Northfield cardboard roll so familiar with this company. Serial numbers will be randomly drawn, but you can request the same serial number you had for the 2011 knife. Membership in the OKCA required to purchase this knife.

Name \_\_\_\_\_

Address \_\_\_\_\_

City State Zip \_\_\_\_\_

Phone Number \_\_\_\_\_

Great Eastern OKCA Whittler @ \$145 \_\_\_\_\_

Serial number request if you purchased a 2011 knife. \_\_\_\_\_

Shipping, if needed, add \$20 \_\_\_\_\_

Total \_\_\_\_\_

Payment in full at time of order.

[www.oregonknifeclub.org](http://www.oregonknifeclub.org)

## 2012 Club Knife Characteristics

The knife is based on Great Eastern Cutlery's #57 pattern. It resembles a wharncliffe whittler, with a clip blade instead of the wharncliffe master blade.

The characteristics are:

- 1) #57 pattern which is about 3-1/2" closed.
- 2) Northfield brand
- 3) Whittler with a tapered spacer between the two backsprings.
- 4) Blades are made from 1095 carbon steel and polished.
- 5) The master blade is a clip blade.
- 6) The shield side smaller blade is a pen blade.
- 7) The other side smaller blade is a coping blade.
- 8) The master blade will have the OKCA Club etch on it.
- 9) The other side of the master blade will have a "1 of 50" etch on it.
- 10) The total quantity of knives is 52.
- 11) The bolsters are dimpled and lined – top and bottom.
- 12) The handles are to be burnt stag.
- 13) The shield is the beaver shield.
- 14) The knives are to be serial numbered, engraved on the top bolster.







# OREGON KNIFE COLLECTORS ASSOCIATION

BOX 2091 • EUGENE, OR 97402

MEMBERSHIP APPLICATION AND SHOW TABLE CONTRACT

**\*PLEASE RETURN THIS ENTIRE PAGE or a photocopy. DO NOT CUT IT UP!\***

Name(s) \_\_\_\_\_

Mailing Address \_\_\_\_\_

City \_\_\_\_\_ State \_\_\_\_\_ Zip \_\_\_\_\_

Phone: Eve ( \_\_\_\_\_ ) \_\_\_\_\_ Day ( \_\_\_\_\_ ) \_\_\_\_\_ Date \_\_\_\_\_

Collector  Knifemaker  Dealer  Mfr./Distrib.  Other \_\_\_\_\_ Email \_\_\_\_\_

OKCA membership includes knewsletter, dinner/swap meetings, free admission to OKCA shows.

\_\_\_\_ Start/ \_\_\_\_ Renew my/our OKCA membership (\$20 individual/\$23 family) \$ \_\_\_\_\_

## 37<sup>TH</sup> ANNUAL OREGON KNIFE SHOW • APRIL 14-15, 2012 425 — 8'x30" TABLES

Exhibit Hall, Lane Events Center and Fairgrounds, 796 West 13th Ave., Eugene, Oregon.

For Information Contact Show Chairman: Dennis Ellingsen, (541) 484-5564

**AUTOMATIC RESERVATIONS:** If you had a table at the 2011 Show, you have an automatic reservation for the same table in 2012, but THIS RESERVATION EXPIRES DECEMBER 15, 2011. You may still apply for a table after this date, but we cannot guarantee a table after December 15. NO RESERVATIONS HONORED OR APPLICATIONS ACCEPTED WITHOUT FULL PAYMENT! Note to NEW exhibitors: your table(s) will be assigned after 12/15/11.

**ALL TABLE HOLDERS AND VISITORS** agree to abide by the OKCA show rules, and to hold the OKCA, its officers, and the Lane Events Center harmless for any accident, loss, damage, theft, or injury.

**ANY QUESTION OR DISPUTE** arising during the show shall be resolved by the Show Chairman, whose decision shall be final.

**THIS IS A KNIFE SHOW.** All tables must be 90% knives or knife related items (e.g. swords, axes, edged tools, edged weapons, knife books, knifemaking supplies). If in doubt, check with the Show Chairman ahead of time. The OKCA reserves the right to bar any item from display or sale. No firearms made after 1898 may be sold or shown at this show.

**ALL EXHIBITORS are required to keep their tables set up throughout the public hours of the Show: 8 AM Saturday to 3 PM Sunday. ANY EXHIBITOR WHO LEAVES OR COVERS THEIR TABLE BEFORE 3 PM SUNDAY FORFEITS HIS FUTURE RESERVATIONS AND WILL BE DENIED TABLES AT FUTURE OREGON KNIFE SHOWS.**

**DISPLAY TABLES** will be around the perimeter of the room. All displays are eligible for display awards, which are handmade knives donated by members and supporters of OKCA. Display judging will be by rules established by OKCA. Special category awards may also be offered. **NOTHING MAY BE SOLD FROM DISPLAY TABLES.**

**SALE/TRADE TABLES** Sharing of tables will not be allowed. Exhibitors must comply with all applicable local, state, and federal laws. Oregon has NO SALES TAX.

**BADGES:** Each table holder is entitled to one additional show badge. **NO EXCEPTIONS.**

**KNIFEMAKERS** who are present and are table holders at this show may enter knives in the knifemaking award competition.

**FOR MORE INFORMATION** on categories and judging criteria in the display and handmade knife competitions, contact the Show Chairman.

**SHOW FACILITATORS** will be provided by OKCA from 10AM Friday until 4 PM Sunday. However, exhibitors are responsible for watching their own tables. Neither the OKCA nor the Lane Events Center will be responsible for any loss, theft, damage, or injury of any kind.

**CITY AND COUNTY REGULATIONS** require that there be:

- No Smoking within the Exhibit Hall at any time;
- No alcoholic beverages consumed within the Exhibit Hall during the public hours of the show;
- No loaded firearms worn or displayed at the show;
- No swords or knives brandished or displayed in a provocative manner.

Violators of these safety rules will be asked to leave.

**NOTE ON SWITCHBLADES AND DAGGERS:** In Oregon it is legal to make, sell, buy, or own switchblade knives. However, it is **ILLEGAL** to carry a switchblade knife, a gravity knife, a dagger, or a dirk concealed on one's person, or for a convicted felon to possess a switchblade or gravity knife. Most other states have banned switchblade knives. Under federal law, it is **ILLEGAL** to mail, carry, or ship a switchblade or gravity knife across state lines.

The Oregon Knife Collectors Association is not responsible for force majeure.

### SHOW SCHEDULE

**Friday, April 13, 2012.**

10am - 7pm set-up; open ONLY to table-holders and members of OKCA.

**Saturday, April 14, 2012.**

7am-8am set-up. 8am-5pm open to public.

**Sunday, April 15, 2012.**

8am-9am set-up. 9am-3pm open to public.

**Tables that are cancelled will revert back to the OKCA. Subcontracting tables is not permitted.**

**EXHIBITOR CONTRACT:** PLEASE ENCLOSE FULL PAYMENT WITH THIS FORM. Full refund granted if reservation canceled by February 15, 2012. **DON'T GET LEFT OUT!!! MAIL THIS PAGE AND YOUR CHECK TODAY.** A signature is required.

Type of knives on your tables \_\_\_\_\_

Name for second badge \_\_\_\_\_ (two badges per table holder)

Qty \_\_\_\_\_ Club Dues (Total from above)..... \$ \_\_\_\_\_ **NO EXCEPTIONS**

Qty \_\_\_\_\_ Sale/Trade table(s) @ \$95 each (members only) .. \$ \_\_\_\_\_

Qty \_\_\_\_\_ Collector Display table(s) **free with sale table:** .....# \_\_\_\_\_

Qty \_\_\_\_\_ Collector Display table(s) w/o trade table @ \$60 each \$ \_\_\_\_\_

TOTAL ENCLOSED (make check payable to O.K.C.A.) ..... \$ \_\_\_\_\_

I have read and agree to abide by the OKCA show rules as set forth in this contract, and to hold the OKCA, its officers, and the Lane Events Center harmless for any accident, damage, loss, theft, or injury. **Signature and date required.**

Signature \_\_\_\_\_ Date \_\_\_\_\_

**\* PLEASE RETURN THIS ENTIRE PAGE or a photocopy. DO NOT CUT IT UP!\***

www.oregonknifeclub.org

## Display Award Knives


**Peter Pruyn**, Grants Pass OR, was the winner of the 2011 grinding competition. His enhancement to the blank started with handles of desert ironwood. The bolsters are of 304 SS with brass pins. The mosaic pins are by Sally Martin. There are inlays of two Damascus steel Telecaster guitars in the wood. You can find Peter at table Q12 at the Oregon Knife Show April 2012. His website is [www.brothersvilleknife.com](http://www.brothersvilleknife.com)



**Jose' Diaz**, Ellensburg WA, has finished one of the knives in his functional rendition. Jose' enjoys the rope cutting exhibitions and competitions and in that spirit has finished this knife by heat treating it to RC 58-59 and has placed a functional handle material on this knife known as "Black Butyl Burl." It is a tough handle material with outstanding grip grabbing and environmental toughness. Visit his website at <http://www.diaztools.com>



**David Kurt**, Eugene OR, has enhanced his knife with a handle of verawood (Argentine Lignum Vitae) with stainless corby handle bolts. The bolsters are black G-10 with stainless corby bolts. David will have a table at the April 2012 Show at I07. Visit his website at <http://dkurtnives.com>

**Jeff Crowner**, Cottage Grove OR finished his version of the blade as a fighter. The 1095 blade was edge quenched and has a cold blue finish. The handle is multicolored G10 and the pins are 1/4" pin stock. Jeff favors the fighter pattern in his knife making. Jeff will have table N12 at the Oregon Knife Show. 



# The Seek-re-tary Report

by elayne

The November meeting was held November 18. We had 28 present. We have been receiving reservations for the December show. The show will be in the Wheeler Pavilion which is the round building at the north end of the parking area of the Lane Events Center. We almost have 80 tables reserved. The room can accommodate 100 so we still have room for more to reserve. Payment is \$20.00 prior to December 1, at the show payment is \$40.00. We will not have a food concession at the show, but there will be food at the Exhibit Hall (the building we usually reserve for the April Show). The hours are 7:00AM set up, 8:00AM public entry and 4:00PM shut down. There is no charge for entry to the show. The 2012 membership cards will be available for pick up. Thank you, **Larry Criteser**, for the work you have done laminating all of them.

Please remember to bring a new, unwrapped toy for our annual donation to Toys 4 Tots. **Bryan Christensen** has agreed to coordinate this event.

December 15 is the deadline for first right on your 2011 table location for the 2012 Show. Also you might check the label on your *Knewslettter* to determine that you are a 2012 member. Membership is a calendar year (January through December).

We had discussion re the changes to the format for the grinding competition at the Show. This year we will have three grinding demonstrations (two on Saturday, one on Sunday). The total of blades available for display award knives will still be twelve. We will again request volunteers to complete the remaining blades for the 2013 Display Award Winners. The 2012 grinding blades will be judged (therefore no changes to the blades will be allowed) at the 2013 Show. **Gene Martin** has volunteered to coordinate this event.

This year we will also have a Balisong Competition at the April Show. This will be coordinated by **Chuck Gollnick**.

There have been some tentative decisions regarding the 2012 Club knife from **Roy Humenick** who is coordinating this offering. His choice for the 2011 Club knife was very well received. The knife will be from Great Eastern Cutlery and a whittler pattern is under strong consideration. See this issue for details.

The following is a list of people who have volunteered to enhance the blades from the 2011 Grinding Competition for the 2012 Display Award Winners:

**Bruce Bump** - Walla Walla WA  
**Jeff Crowner** - Cottage Grove OR  
**Jose Diaz** - Ellensburg WA  
**Tedd Harris** - Springville UT  
**Keith Johnson** - Eugene OR  
**Geoff Keyes** - Duvall WA  
**Gene Martin** - Williams OR  
**David Kurt** - Eugene OR  
**Lynn Moore** - Fall Creek OR  
**Joel Purkerson** - Lebanon OR  
**Peter Pruyn** - Grants Pass OR  
**Mike Quesenberry** - Blairsden CA

We have received a number of the completed knives (see article) and these will be on display at the December show. These will then be transferred to **Excalibur Cutlery**, Valley River Center, Eugene OR, for display. Be sure to thank them for their efforts on behalf of our Show.

See you at the meeting Wednesday, December 21, at the Sizzler Restaurant, Gateway, Eugene/Springfield OR. 🐾



## A Smile Knife Martin R. Drivdahl

On our travels from Mesquite NV to the OKCA Knife Show last April, my wife and I planned a route to include visiting the beautiful little town of Bishop CA. I latched onto this little gem at an antique shop there. Both blades are stamped EMPIRE WINSTED CT. I think it's quite old and my "price" book shows a four star collectibility rating.

It certainly brought a smile to my face, though I might have witnessed a slight frown as my wife examined the fine artwork on the brass scales. That changed after visiting the world class bakery in Bishop. As we headed north toward Oregon, we were both wearing broad smiles. 🐾







# OKCA Free Classified Ads

Free classified ads will run up to three issues and then be dropped. Available only to paid members. Write your ad on anything you have handy (except dorkfingers) and email or snail mail to the **OKCA, PO Box 2091, Eugene OR 97402**. The number and size of ads submitted by a single member will be accepted, or excepted, dependent on available space and the mood of the editors.

**WANTED:** Outers style knives by any maker and any handle material. Will pay fair price and shipping. Please contact Richard Bruce, 13174 Surcease Mine Road, Oroville, CA 95965; (530)532-0880; email address: Richardkarenbruce@yahoo.com.

**For sale** - If you would like any of the following throwing knives personally delivered to you at the April OKCA Knife Show let me know ahead. Pierce-Arrow, Claw-Z, SlimJim Pro or the ever popular NEV-R-MIS throwing Bowie with sheath. Bob Patrick 816 Peace Portal Dr. Blaine, WA 98230 (604)538-6214 bob@knivesonnet.com

**WANTED--JAPANESE SAMURAI SWORDS:** Collector Buying Collections, Estates, & Individual Swords. Appraisals. (715)557-1688

**Wanted to Buy:** Buying knife collections and estates. One piece or entire collection. World War II, military, hunting, pocket, modern, vintage, tactical, custom. rilvervalleyknives@yahoo.com (715)557-1688.

**For Sale:** Military knives, WWII, Korean, Vietnam. Mark I's, Mark II's, Western 8 inch, M3, utility, survival, British, etc. Some mint, some not. Call Bob (541)968-6245

**Wanted** 1/2 inch x 1-1/2 inch x 12 inches [or close] nickel silver. Will pay top dollar. Contact Bill Herndon [bherndons1@roadrunner.com] or call (661)269-5860.

**Knifemakers Downsizing Sale** -Vises, electric motors, hammers, handle and blade materials. Small older table saw, two vacuum pumps suitable for a stabilizing outfit. Piles of interesting junk plus a large free pile. Call for an appointment, ask for Wayne (541)689-8098

**HOT OFF THE PRESS** - 2ND edition *The Wonder of Knifemaking* by Wayne Goddard, revised and in color! \$30. shipped by priority mail. Get your autographed copy now by calling Wayne at (541)689-8098

**For Sale older knives.** Please visit HHknives at www.allaboutpocketknives.com. Thanks for looking.

**For Sale** - Keen Kutter folding knives. Two diamond edge knives by Shapleigh Hdw Co. One E. C. Simmons Hardware Co St Louis MO straight razor in original box. Call Martin (406)442-2783 or cell (406)422-7490 for free photos and knife/items description and price list..

**For sale** - OKCA Club knives. Schrade Lake Walker 2002 - Harsey Air frame 2001 - Contact Maynard Meadows (541)935-3622.

**Ellis 12-VT Forge Body**, perfect, little used. Lined, ready to go. \$200.00. Bend OR. knives@threesistersforge.com (541)382-7388

**For Sale:** Item #1 WWII Case v 44 all original WWII. Blade is full and has some sharpening on the edge but lightly. Has lots of original polish, no rust stains or darkening. It comes with the original WWII leather sheath. no stains, still lite in color, lite tan, cross guard has nice dark brass color not polished, its black handle is exc., no chips, a very nice set. \$475.00 post pd.&ins. Item #2 WWII M 8 scabbard for U S M3 has short belt loop & no hanger hook has its original leather tie down lace. Over all very good plus condition \$100.00. MFerris P O Box 250 Clayton CA 94517 (925)672-4382 - email mdl1ferris@aol.com

**Knife Sheaths.....** Many, many different sizes and styles. If you need a new sheath for that favorite knife of yours, bring it to the Mini Show and find one at our table. If we don't have what you want, we can make it for you. Ray Simonson Wild Boar Blades P.O. Box 328 Toutle, WA 98649 (360)601-1927 www.wildboarleather.com - ray@wildboarleather.com

**Wanted**-Any information available relative to a soldier/sailor who scratched the following info onto his Kingstom military issue pocket knife "D. N. Hubbard OCT 3, 1945 - Lipa, Luzon - Phillipine Islands" I would like to locate this serviceman or his family and present this knife to them as a memorial to his service. Please respond by email to rabonpville@yahoo.com or by snail mail to Ray Roe, 1007 Pine Creek Dr., Pflugerville TX 78660. Call at (512)251-0805.

**Wanted** -Knives and also ephemera and information about Bruckmann knives. Bob Patrick 816 Peace Portal Dr., Blaine WA 98230 (604)538-6214 bob@knivesonnet.com

**For Sale**- Duplicates from my collection of wood handle Coke knives, small size (3-1/2"/+/-), large size (5-1/4"/+/-) or trade for ones I do not have. Only wood handle knives, please. Ron Edwards, email me @ ronjoyceedwards@comcast.net

**Mosaic pins and lanyard tubes** by Sally. See at www.customknife.com, email at sally@customknife.com. Phone (541)846-6755.

**Blades and knifemaker supplies.** All blades are ground by Gene Martin. I also do custom grinding. See at www.customknife.com, contact Gene at bladesmith@customknife.com, or call (541)846-6755.

**USEFUL REFERENCE BOOKS ON BLADES-**Collectible knives, custom knives and knife making, military knives, swords, tools, and anything else that has an edge. E-mail for a list. As our name implies, if we don't consider a book to useful and a good value we will not sell it. **QUALITY BLADE BOOKS**, C/O Rick Wagner, P.O. Box 41854, Eugene OR 97404 (541) 688-6899 or wagner\_r@pacinfo.com

**WANTED:** OKCA Club knives serial numbered "16." Need 1992 Gerber FS1—1989 Cripple Creek----1987 Al Mar Tanto—1983 Gerber Paul—1981 Gerber Gentleman Jack LST---will give \$100.00 for any 1980 Club Silver Knight. Fred Coleman (541)915-6241

**Wanted:** 1997, 1998, 1999 and 2000 OKCA silver medallions. Heceta Lighthouse, Oregon Beaver, Multnomah Falls and Mt. Hood. Call Jim (562)716-9857 or email:jpiitt306@earthlink.net.

**Knife Laws** on-line. Federal, state, local. Bernard Levine (541)484-0294 www.knife-expert.com.

**For Sale:** Made in France. Ready to blue or polish. Heavy 1095 French drop forge patch knife blades- 5 assorted- 2-1/2 to 3-3/4 plus strong rod tang. Pre hand shaped. You just sharpen and handle with stag or branch wood. Then sharpen as you will (5 blades) including shipping \$33.00. Visa/M/C/AMX. Sorry no pictures. 100% satisfaction. Club member Elliott-Hiltary Diamond 6060 E Thomas Rd Scottsdale AZ 85251 (480)945-0700 Fax (480)945-3333 usgrc@cox.net

**Wanted:** SEGUINE Knives - Please call Jack at: (805)431-2222 or (805)489-8702 -- email:jh5jh@aol.com

**Randall Made Knives.** Buy, Sell, Trade. Also a good selection of Case knives, and many custom knives for sale or trade. Jim Schick www.nifeboy.com (209)333-1155.

The views and opinions implied or expressed herein by authors and advertisers are not necessarily those of the Oregon Knife Collectors Association, its editors, or its officers; and no responsibility for such views will be assumed. The OKCA, its officers and its editors assume no responsibility for claims of advertisers for the quality of goods and services the advertiser provides. The act of mailing or delivering a manuscript or advertisement shall constitute an express warranty on the part of the contributor that the material is original and in no way an infringement upon the rights of others. The act of mailing or delivering a letter or question to the editor shall constitute permission to publish the letter or portion thereof unless the Oregon Knife Collectors Association is informed otherwise in that letter. This Knewsletter is devoted to the general interest of the knife community and does not include personal information such as births, deaths and illness. We also strive to use only material that is directed to the world of cut. Our charter mandates that our mailing list of the membership cannot be sold or used by other than the Oregon Knife Collectors Association.

**OKCA Club**  
**Whot-zits & Who's Zits**

<p><b>Darrold (Ole) Olson</b> <i>President (541) 285-1412</i></p> <p><b>John Priest</b> <i>Vice President (541) 517-2029</i></p> <p><b>Elayne Ellingsen</b> <i>Sec/Tres. (541) 484-5564</i></p>	<p><b>Craig Morgan</b> <i>Master at Arms (541) 345-0152</i></p> <p><b>Dennis Ellingsen</b> <i>Show Coordinator (541) 484-5564</i></p> <p><b>Knewsletter</b> by elayne &amp; dennis</p> <p><b>Web page</b> <a href="http://www.oregonknifeclub.org/">http://www.oregonknifeclub.org/</a></p> <p><b>Club email</b> <a href="mailto:okca@oregonknifeclub.org">okca@oregonknifeclub.org</a></p>	<p><b>OKCA</b> <b>PO BOX 2091</b> <b>EUGENE OR 97402</b> <b>(541) 484-5564</b></p> <p><small>Copyright (C) 2011 Oregon Knife Collectors Association. No part of this Knewsletter may be reproduced without permission of the OKCA. Email <a href="mailto:info@oregonknifeclub.org">info@oregonknifeclub.org</a>. Layout and printing by instaprint - 1208 W. 6th - Eugene, OR 97402 - Phone (541) 686-8591</small></p>
---	---	--



**The Knewsletter**  
 Oregon Knife Collectors Association  
 PO Box 2091  
 Eugene, OR 97402

## Cutlery Events Calendar

### December 2011

Dec 08-10 - Parker's Greatest Knife Show - Sevierville TN (KW-B)  
 Dec 10-10 - Oregon Knife Collectors - Eugene Oregon (KW-B)

### January 2012

Jan 06-07 - Helsinki Knife Show - Finland (KW-B)  
 Jan 20-22 - Antique Arms Show - Las Vegas NV (KW-B)  
 Jan 28-29 - Gateway Area Knife Club - St Louis MO (KW-B)  
 Jan 27-29 - ABS Knife Expo - San Antonio TX (TK)

### February 2012

Feb 03-05 - Gator Cutlery - Lakeland FL KW-(B-KI)  
 Feb 18-19 - Little Rock Arkansas Custom Show (KW-B-TK)

### March 2012

Mar 02-04 - East Coast Custom Show (KW-B)  
 Mar 03-04 - Western Reserve Show - Dover OH (KW)  
 Mar 09-11 - Dalton Georgia Knife Show (KW-B-KI)  
 Mar 10-11 - Lone Star Knife Expo - Fort Worth TX (KW-B)  
 Mar 23-25 - Knife Expo - Pasadena CA (KW-B-KI-TK)  
 Mar 23-25 - Badger Knife Show - Janesville WI (KW-B-TK)  
 Mar 23-25 - Salt Lake City UT Knife Show (KW-B-KI)  
 Mar 24-25 - Bunker Hill Show - Bethalto IL (KW)

### April 2012

Apr 14-15 - Oregon Knife Collectors Show - Eugene OR (KW-B-TK)  
 Apr 19-21 - Greater Cincinnati Knife Show (B)

Apr 27-28 - Northeast Cutlery - Mystic, MA (KW)  
 Apr 28-28 - Solvang California Custom Knife Show (B)  
 Apr 28-29 - Wolverine Knife Show - Novi MI (B-TK)

### June 2012

Jun 08-10 - Blade Show - Atlanta GA (B) Jun10-12-Blade Show - Atlanta GA (B)

## DINNER MEETING



*Wednesday Evening*

**December 21, 2011**  
 Third Wednesday  
 of the Month

**Sizzler Restaurant**  
 1010 Postal Way  
 Gateway Area  
*(Across from the  
 Post Office)*

6:00 PM Dinner  
 Followed by meeting

Come Knife with us!  
 Bring a  
 Show-N-Tell knife!

*Contact Dennis or Elayne (541)484-5564 for additional information on OKCA events. For non-OKCA events, contact the sponsoring organization. Additional info = (B)lade Mag. - (KW) Knife World - (TK) Tactical Knives (KI) Knives Illustrated*

