



OKCA 37th Annual • April 14-15

KNIFE SHOW

Lane Events Center & Fairgrounds • Eugene, Oregon

April 2012

Our international membership is happily involved with "Anything that goes 'cut'!"

YOU ARE INVITED TO THE OKCA 37th ANNUAL KNIFE SHOW & SALE

April 14 ~ 15 * Lane Events Center & Fairgrounds, Eugene, Oregon
In the super large EXHIBIT HALL. Now 425 Tables!



You Could Win...

a new Brand Name knife or other valuable prize, just for filling out a door prize coupon. Do it when you arrive so you won't forget!

You can also...

buy tickets in our Saturday (only) RAFFLE for chances to WIN even more fabulous knife prizes. Stop at the OKCA raffle table before 3:00 p.m Saturday -- tickets are only \$1 each, or 6 for \$5.

Join in the Silent Auction...

Saturday only we will have a display case filled with very special knives for bidding. Put in your bid and see if you will take home a very special prize.

Free Identification & Appraisal

Ask for Bernard Levine, author of *Levine's Guide to Knives and Their Values*, at Table N01.

WELCOME to the Oregon Knife Collectors Association Special Show *Newsletter*. On Saturday, April 14, and Sunday, April 15, we want to welcome you and your friends and family to the famous and spectacular OREGON KNIFE SHOW & SALE. Now the Largest Knife Show East & West of the Mississippi River.


The OREGON KNIFE SHOW happens just once a year, at the Lane Events Center & Fairgrounds EXHIBIT HALL, 796 West 13th Avenue in Eugene, Oregon. April 14 - 15. Saturday 8 am - 5 pm. Sunday 9 am - 3 pm.

At the Show, don't miss the special live demonstrations on Saturday and Sunday. This

year we have a Balisong/Butterfly knife Tournament, Blade Forging, Blade Grinding seminar, Engraving, Flint Knapping, Haganah Self Defense, quality Kitchen Cutlery seminar, Martial Arts, Scrimshaw, Sharpening Knives, Wood Carving and a special seminar on "what do you do with that kitchen knife you have." And don't miss the FREE knife identification and appraisal by knife author BERNARD LEVINE (Table N01).

PLUS, every hour we will be GIVING AWAY FREE knife and knife-related door prizes. Fill out a coupon when you enter and watch for your number to be posted near the prize showcases and on the Big Screen moving sign. We will have a raffle and a

silent auction Saturday only. Anyone can enter the raffle or silent auction. See the display cases at the Club table to make a bid and those by the exit to see the raffle items and purchase tickets so you could win.

Along the side walls, we will have twenty two MUSEUM QUALITY KNIFE AND CUTLERY COLLECTIONS ON DISPLAY for your enjoyment and education, in addition to our hundreds of tables of hand-made, factory and antique knives for sale. Now 425 tables! When you arrive you can get lots more information about the Knife Show and about the Oregon Knife Collectors Association (OKCA) at the Club table, to the left of the entrance. 

COME JOIN US AT THIS 37th YEARLY KNIFE SHOW!!!

Collins & Co. Animal Head Pommels B.K. Brooks

I have an extensive collection of Collins & Co. knives, machetes and swords. Collins & Co. is a true American knife and sword maker that produced cutlery for the Civil War, the Spanish American War on up to World War II spanning a time frame from 1826 to 1966. I did a prior



article in *Knife World* that covered the Collins & Co.. No.18 Gung Ho Bowie, or more correctly called machete. The funny thing is, after I show people my extremely rare numbered Carlson Raiders' knife, the ooing and aahing is for my Collins Animal Head Pommel collection. They are kind of cool and interesting so here is some information with some show and tell pictures.



Lobo or wolf model

one piece integral fancy guards, then nickel plated. Later they were cast in nickel silver (German silver). The Elephante model was always cast in aluminum. One must remember that back in those days aluminum was not considered a cheap metal, but a high end metal; since this was before it was produced extensively and became common place.

You should note in the attached pictures that the Elephante and Aguila have openings for leather wrist straps or sword



The Elephante model

The Lobo or wolf model was first produced by Collins & Co. in Hartford Connecticut and displayed at the 1876 Philadelphia Centennial Exhibition. They then produced the Aguila (eagle), Gallo (fighting cock) and finally the Elephante (elephant). The Animal Head Pommels were in Collins & Co. catalogs up to 1936. Their production ceased near the beginning of World War II. Some excess stock was sold in 1951 and was listed in *Catlogo M.*

Animal Head Pommels were first cast in brass with



Aguila (eagle)

knots. Mint, or as new animal head handles, will also have the original red felt washers around the blade and up against the handle. These rarely seen red felt washers increase the value tremendously as I saw an Elephante in very good condition with a genuine red washer exceed \$1000 in eBay bidding, while another Elephante which was in almost mint condition (better but sans red washer) only sold for \$550 on eBay during the same time frame. I have seen these Animal Head Pommels go for as low as \$225; but remember, it is

condition, condition, condition that command the best prices.

Typical condition issues are the handles which are very inclined to have insect damage or show signs of handle wear. The checked pattern handle is seen on most of the Collins & Co. Animal Head Pommels. There is a variation with the standard Aguila or eagle head pommel (not Spanish/Cuba specific export model) which sometimes comes with a smooth, highly polished horn handle. I have one smooth horn handle sword and also a bowie knife in the Aguila model. I remember being at an Oregon Knife Collectors event and being in a



Gallo (fighting cock)

discussion with a Mr. Mike Silvey who asked if I had ever seen an unchecked, smooth, horn handle before; as he had an Aguila and was afraid it was a re-handle job. I told him yes I have two, seen others; and we agreed that there are enough out there to suggest this was just a variation of factory-made handle material. Remember I have only seen smooth horn handle on the Aguila models which were most likely destined for the upper ranks of the Latin American Military.



Fireman's Sword

Another condition issue is the glass eyes which can be missing or cracked. The Elephante and the Aguila Spanish/Cuba production model did not have glass eyes. When I first started collecting, I did not notice that the glass eyes were missing; and this is a very common defect. They seem to be easily dislodged so care must be exercised in the handling of these items.

Animal Head Pommels came in many blade shapes and styles, as a knife, machete, sword and an up swept sword. Blade numbers included No. 17, No. 18, (most common in Elephante) No. 376 (Gallo and Lobo) and No. 86 and No. 87 machete. Most were sold in large quantities to Latin America with the tang normally showing the common Collins Logo Spanish marks which include lines such as ACERO FINO / CALIDAD / GARANTIZADA along with the normal Collins information and arm with hammer logo. A machete made for Cuba in the Aguila style (which copies the Spanish Military Eagle and differs from Collins & Co. first Aguila head) is the No. 86 machete. It will have specific Logo Spanish markings such as LA CATALANA / TENIENTE REY 26 / HABABA, then on the other side MACHETE REGLAMENTARIO. I have also seen some with unit numbers cold pressed on.



Eagle Spanish Cuban import

The Rarest Model

The Animal Head Pommel model which is hardest to find is not even commented on in D E Henry's book *Collins Machetes and Bowies 1845-1965*; but you can find it on page 216 in a picture of the Sample Board as Model 375 along with many other knives, tools and machetes which makes it hard to see. On page 192, under his model number lists,

What Can U Expect To See At A Knife Show?

A knife is man's earliest tool. It has evolved from a simple tool to a symbol for royalty and to an art form. It is used daily in all facets of our lives and has also become a protector of freedoms in our battles. The knife can be made of steel but also stone, bronze, ceramic or other exotic materials.

The knife at our Show takes on a new definition under the umbrella of "anything that goes cut." It can mean a corkscrew, a hat pin, a sword, a pocketknife, scissors, a hunting knife, a military knife, an art form, a kitchen knife or a butter knife.

Our once-a-year gathering brings in cutlery enthusiasts from around the world; and, with much excitement, we now rightfully claim to be the largest event like this in the world. All parts of the globe are represented at our Show with visitors from Europe, Africa, Asia and North America. You will also be hard pressed to find a state in our country that is not represented either by a table-holder or a visitor.

Interest in this cutlery world runs from the historical to the artistic. And in this realm you will see knifemakers displaying their products. You will also see suppliers of products that are used to make up the knives. This can be leather for sheaths, handle materials that are man made or natural, tools to make knives and art forms that are specialized to enhance the knife with exotic material like gold and silver. The knife also presents itself to the artist who will use their talents for scrimshaw and engraving to make knives with artful expression.



As in all collecting circles there are specialists that home in on special arenas of a subject. See the displays that adorn the walls on the perimeter of the room. These are truly museum quality displays. Enjoy and learn from them.

On Saturday and Sunday we have seminars and demonstrations that will show the making of stone knives, scrimshaw, culturally unique knives, skills at knife handling and the making of knives through forging. We will have it all at this year's spectacular 425 table all knife show.

As you wander the aisles of our Show, you can stop at any of the custom maker's tables and examine their skill and craft. You can stop at the tables where you will find knife collectors selling their knives and find out why that knife in your tackle box or the one in the drawer could be just like the one offered for \$100. Further exploring will find many commercial knives for sale that are from Al Mar, Buck, Case, Coast Cutlery, Gerber, Great Eastern, Kershaw, Queen, Spyderco and numerous other companies. You will also see the latest knives being

offered with new and innovative patterns and opening mechanisms.

Don't forget to bring grandma's or grandpa's old knife or the one you have no idea about and have it appraised for free at our Show. You never know what that knife you use to dig weeds might be worth. It might even stop you from digging weeds with it, as has happened in some cases. Or in some cases you might want to even upgrade your weed digger and attack those weeds with a little class.

This organization has encouraged donations which are used for three purposes. We have door prize drawings during the Show. There are some pretty spiffy knives given away to lucky winners. We also have a raffle on Saturday which anyone can enter. Most are choice items. And then we will have our silent auction on Saturday. These are the extra special knives that are donated to help fund our event and are sometimes one-of-a-kind knives or special collector's knives. Watch this auction carefully and get involved. It is located at the Club table, and anyone can get in on the bidding.

The idea for the Oregon Knife Show evolved some 38 plus years ago. The idea then was the same as it is today. This is a fun Show. It is designed to be educational, informative and a happy-face place. It is designed to show off the skills and craftsmanship that are so much a part of the "World that goes cut." It is a once-a-year museum. It is a once-a-year art show. It is a once-a-year show for people to share interests and get to see friends. We do not specialize in interest groups that are lumped together but instead, randomly, have all types of knife related merchandise on tables scattered throughout the building.

And just like Disneyland, all the food here has no calories.

If yours is an interest in pointy things or "things that go cut"..... Come join us...



Collins & Co. Animal Head Pommels *(continued from previous page)*

Henry calls it a cast Lions Head pommel. Henry probably only had the small picture on page 216 to look at and conjectured it was a lion's head. It is definitely a Lobo or wolf's head. I have only seen two for sale in my many years of collecting. Both were for sale out of Peru and



Collins saw tooth sword

described as a Fireman's Sword. My contact with the Collins Museum, that is located in the Canton Historical Museum: <http://www.cantonmuseum.org/>, confirmed that is what they are called and confirmed it looks like a wolf's head to them versus a lion's head. The Museum also has one example of this Fireman's Sword on display. It does not have glass eyes, and the blade has a saw feature versus a sharp edge. The tang marking is Collins & Co. / Hartford / Cast Steel / Warranted. These pictures are of the Fireman's Sword I got from Peru.

B.K. Brooks is a table-holder at the 2012 Show and his table number is N03.

Another Show...! Merle Spencer

Ah...another Show at Eugene. I used to be just like a kid at Christmas when a knife show was coming up. I still enjoy them very much.

Before we recently moved to Eugene, I used to anticipate the Show for weeks. I would plan what to take with me to show and what to pack for a three-day stay at a motel.

When we finally left on the drive to the Show, I could hardly wait to get there; and when Janie let me out in front of the building, I would wonder which old friends I was going to see first. It was just like it used to be when elk season came around, and I would climb up Bryson Ridge in the dark and look out over the Big Opening just at daylight and say to myself, "Finally!"

Now that I live here, all I need to do is have breakfast and head for the Show. Janie knows I'll be there all day, and we won't have to make plans to meet or when to register at the motel. We may or may not meet for lunch.



I park and go in and start my tour. I always make a big circle first, stopping to talk to old acquaintances, and mainly just make the round to see what is there. Some of them, naturally, are involved with prospective buyers, so I make a note to come back. Sometimes I see



something of particular interest, but usually I keep going, checking both sides of the aisle as I go.

This takes about an hour or so, depending on how many stops I make. Then when I get back to the entrance, I walk through the whole Show.

The main difference from the old days is there's more arthritis to contend with, and I do less walking. I need to take occasional coffee breaks in the lobby. Giving a table-holder a break by watching his table sometimes solves that. He usually has a chair that I can rest in.

Since I have a Show floor map, I keep checking to make sure I don't miss anybody I want to see, and especially what new stuff is available for sale. I look forward to seeing some makers whose work I like.

In my old way, by the time I had visited with some old friends and seen some things I wanted to look at again, it was usually noon, and time to meet my wife at the front to go to lunch.


Then after lunch, I picked up where I left off and went on enjoying myself. I never really bought anything on the first tour. It was kind of a look around, although I might select a couple mosaic rods of a pattern I like, and maybe a block of stabilized wood handle material. I left the serious stuff for later when I wasn't bothered with what may be on the tables I hadn't seen yet.

When I got all the way around, I checked my map and went back to the places I had selected as tables to re-visit. I might have seen a special knife I liked, or some pearl or other material that might look good on a knife.

I'm often surprised at what is for sale at knife shows – from engraving equipment to books and of course, knifemaking supplies. I've seen fine carvings, samples of scrimshaw, demonstrations of engraving and blade grinding, contests in rope cutting, and awards for the finest knives in various categories.

I have sometimes taken three days to actually decide to purchase a certain knife. That pays off, though, because I don't have a one I wouldn't buy again under the same circumstances. I spent the rest of the Show this way and was happy by the end that I was satisfied and pleased that I had come.

I still like to use the same method in visiting a show and I always have a good time and sometimes end up with a knife I like.

The Eugene Show date is not too far ahead now, and I already feel the anticipation building. I'll walk in the door and look to see whom I recognize. Then I'll make a big circle. I'll look for that special knife I can't live without. 



Hawk media
VIDEOGRAPHY / GRAPHIC DESIGN / PHOTOGRAPHY

PHOTOGRAPHY & PHOTO PRINTS

Join Hawk Media at the 2012 OKCA in Eugene, OR. We offer professional pictures and sameday printing at great prices.

Our booth will be located @ table# x12 Friday, Saturday, & Sunday.

Fighting Cancer with a Knife

Andrea Duvall

My full time veterinary career offers me a part in the health and joy, sickness and recovery, as well as the pain and death—of my beloved 4-legged friends. This work also brings me close to the relief, fear, hope, anxiety and grief of their 2-legged care givers. The cancers that attack our pets are cause for much animal and owner suffering. A family enters my practice with their adored dog, who has been “off” for few days. After a physical exam and diagnostic tests, BOOM, I have to tell them that their companion has cancer. Names like “hemangiosarcoma,” “lymphoma,” “osteosarcoma” and “metastatic” are the words I never want to speak; and my owners hope never to hear. When the diagnosis is clear, one feels a mule kick to the gut; and the world seems to stop.

Cera Reusser was a client at a practice I worked at whose black lab, Chase, died of an aggressive nasal



aggressive cancer had spread from Chase’s nasal cavity to her brain. Despite a rapid diagnosis and referral, even the veterinary oncologist couldn’t treat Chase—the cancer was too aggressive. Cera chose to convert her grief into action. She started the fund “Chase Away K9 Cancer” within the National Canine Cancer Foundation to raise money for research and to promote awareness of canine cancers. In a short five years, she has raised over \$500,000, every dollar of which is directly used for active canine cancer research in major veterinary universities across the nation. This research is doubly valuable as it benefits our canine friends and has important implications for human health as well.

I was delighted when Cera contacted **David Kurt Handmade Knives** to donate a knife for “Chase Away K9 Cancer.” David, inspired by Cera’s story, designed a handsome knife to honor Chase: a sleek, mirror finished



stainless blade with rope-file work. A polished black G-10 handle seems a fitting tribute to the black, master hunter Labrador known for her outstanding jumping ability in the “Dock Dog” competitions. I crafted a companion leather sheath, and David sent the blade and sheath for engraving. The original knife has been donated for fund raising, and we commit to donating a percentage of our profit from each subsequent “Chase” knife purchased this year. Each year, we plan to create a new Chase knife design and will be donating the original knife to this worthy cause, as well as donating a percentage of sales of subsequent knives of this design to the foundation.

stainless blade with rope-file work. A polished black G-10 handle seems a fitting tribute to the black, master hunter Labrador known for her outstanding jumping ability in the “Dock Dog” competitions. I crafted a companion leather sheath, and David sent the blade and sheath for engraving. The original knife has been donated for fund raising, and we commit to donating a percentage of our profit from each subsequent “Chase” knife purchased this year. Each year, we plan to create a new Chase knife design and will be donating the original knife to this worthy cause, as well as donating a percentage of sales of subsequent knives of this design to the foundation.

We are proud to be part of the “Chase Away K9 Cancer” campaign and encourage you to “Be your dog’s hero” and help find a cure for K9 cancer! (see www.chaseawayk9cancer.org/)

Butterfly (Balisong) Competition

For the first time ever, the OKCA will be taking their balisong demonstrations to a whole new level. Members will be traveling from all across the United States to participate in the first annual OKCA balisong flipping tournament. The tournament itself will be held at 12:00 PM on April 14th, and will last approximately 2 - 3 hours.




There will be two skill divisions: Novice and Experienced. Skill divisions will be chosen upon arrival with a quick performance test. Participation in the tournament is free, and beginner participants are encouraged! We just require that you sign a waiver of liability for any potential injuries.

The tournament will feature three rounds. The first round will be a simple freestyle - anything goes, The second will be aerals - anything that sends that knife flying, and round three is ambidexterity - transfer based moves or doubles. Each contestant will get three attempts per round to execute their combo. There is no time limit, but performance duration will be kept reasonable. In between each round there will be a 5 minute intermission before the next begins to allow for voting.

After each round every participant will cast a vote for each division based on who they thought had the best routine. After the tournament, the votes for each round will be added up and the winners will be chosen. In the event of a tie, a sudden death will take place.

Prizes include a Darrel Ralph “Holy Moly” custom balisong, a one of a kind Nathan Dewey Gremlin, a custom BBbarfly, apparel from Bladerunners Systems, Balibalistic and more! First, second, and third place in each division will receive a prize.

Don't miss out on meeting some of the best flippers in the world!

Andrea Duvall, DVM is a full-time veterinarian who has been practicing small animal medicine and surgery for over 12 years. Additionally she partners with David Kurt in David Kurt Handmade Knives, a knife design and handmade manufacturing business. She designs and crafts leather sheaths to accompany David’s knife designs as well as manages other aspects of the business. Andrea and David can be found at table I07 at the Oregon Knife Show. 

Eateries

A large percentage of our visitors are from out of area, coming from as far away as Japan and England. We list many places they can lodge in comfort, and at this point we felt we should name a few of the places to dine while here. Eateries is what I call them. Eugene has some of the best in dining. First on our list is **Sweet Waters** at the Valley River Inn. Because so many of our visitors stay at the VRI, they now open for breakfast at 6:30 in time to fuel up for a day at the Show. This is fine dining at its best. If you like sea food, we suggest **McGraths**; and also a little fish place close to the Show called the **Fisherman’s Market**. For Oriental cuisine try **Ocean Sky** or **Louies Village**. There are also numerous Sushi restaurants in the area. My favorite is **The Sushi Station** located on 5th street. Mongolian food is best at **Jungs**. Mexican is good at **Tio Pepe** and Italian can be found at **Mazzi’s**. Pizza is near the Show area at **Papas Pizza**. To get your day started, we like **G.J.’s** for breakfast along with **Ye Olde Pancake House**. If you are in a rush and just want that energy pill called a donut, we recommend **Bob’s Donuts** on Garfield. With all these good food choices, don’t forget to come to the Knife Show. Maps are available in the lobby or ask us, and we will be happy to tell you where to go (oh, sorry, how to get there).

Cutlery Superstitions

Larry Vickery

I was raised by my grandparents and was always interested in their superstitions. Many of these were based on safety, and I found were really an easier way to remember not to do something. Walk under a ladder, open an umbrella in the house, walk behind a horse etc, all seemed to make some sense. One of these superstitions was always interesting to me. My grandfather being from the "Old Country" had many superstitions but never handing a knife directly to someone always seemed a little strange to me. He would always put a knife down on the table or desk and allow me or others to take it from there. It wasn't until recently that I discovered that other than for safety reasons there were other superstitions out there relating to knives. This is a collection of some of the superstitions I've been able to find. The most common by far was exchanging a gift knife for a penny.

Giving a knife as a gift

- A knife as a gift from a lover means that the love will soon end.
- If a friend gives you a knife, you should give him a coin or your friendship will soon be broken.
- Never give a knife as a housewarming present, or your new neighbor will become an enemy.
- Never make a present of a knife or any other sharp instrument unless you receive something in exchange.
- Giving a knife as a gift you should tape a penny to it so as to not sever the relationship.
- Scotland: Knives, if requested as a wedding present, would always be given with a penny.
- In some cultures giving a knife as a gift is considered a sign of respect and trust. This is especially true in Finland where various non-governmental organizations, clubs and even government agencies traditionally give a *puukko* (a Finnish fixed-blade hunting/outdoor knife) as a gift to trusted employers or contacts. The *puukko* is always presented handle first as a sign of trust and friendly intentions.
- When someone gives you a knife as a gift, always give a penny for it or you will cut yourself badly.



Drop

- A friend of mine will not pick up a knife if she drops it and will only let someone else pick it up for her because it will cause bad luck!
- If you drop a knife both a man and woman are coming .
- A knife on the floor = stranger to the door...(cross your fingers when picking it back up to break the meeting).
- Knife falls, gentleman calls; Fork falls, lady calls; Spoon falls, baby calls.
- If you drop a knife on the kitchen floor, company will be arriving from whichever way it is pointing
- Icelandic: If someone drops a knife while cleaning fish and the knife points to the sea, that presages good fishing when next you go to sea.
- Russian: If a knife falls to the floor, it is a sign that someone male will come to visit. Drop a fork or a spoon and someone female will soon appear. "If you don't want them to come, you have to immediately knock three times with the utensil on the table and say 'stay at home.'"
- Whereas a knife dropped in both Bulgaria and Britain is presumed to forecast a male visitor to the house, in the British Isles the theme is extended two steps further: a dropped fork predicts the arrival of a woman, and a dropped carving knife means a policeman will be paying a visit.

Cooking/food

- Stirring liquids or powders with a knife is often considered unlucky. One rhyme says, "Stir with a knife, stir up strife".
- If you cut hot cornbread with a knife, you'll cut your luck
- Pennsylvania-Germans: It may cause pain or stitches in the side to stir anything with a knife.

- One may not pierce the bread of a pregnant woman with a knife or fork, or else the child's eyes will be poked out.



Table

- It will cause a quarrel if knives are crossed at the table.
- As early as 1646 reference is made to a superstition of laying a knife across another piece of cutlery.
- If you lay a fork flat on the table with the tines up, do not rest a knife on edge using the tines to support it. If you do, you and whoever you're eating with (or whoever you next eat with if you're alone) will quarrel.
- Crossing your knife and spoon on your plate after you have eaten is an indicator that the food tasted horrible and that you wish bad luck on the cook.

Household

- A knife placed under the bed during childbirth will ease the pain of labor.
- To guarantee a boy the husband was to stick a knife in his pregnant wife's mattress. For a girl put a skillet under the bed.
- Or a knife stuck into the headboard of a cradle to protect the baby-to-grave so the dead would not be defenseless in the next world.
- In Greece a black-handled knife placed under the pillow is used to keep away nightmares.
- In some zones of Southern Italy many people put a knife in the door frame, in order to keep bad spirits out from the house. (source: my wife - she comes from there!)
- To scare away evil sprits, Chinese women may sleep with knives under their bed. Often a piece of paper cut to resemble a pair of scissors is hung from bed curtains and tiger skins are hung over the bed.

Handling

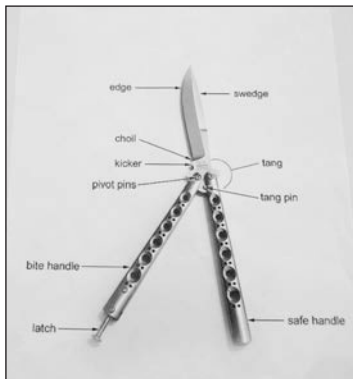
- It is bad luck to close a pocketknife unless you were the one who opened it.
- Always close any knife you open. Never close any knife someone else has opened.
- Supposedly the *Kukhuri* is supposed to draw blood before its put back in its sheath or all kinds of bad crap is to befall you...
- I was always told a knife isn't truly yours till you have drawn blood with it. Seeing as I used to be fairly accident-prone, I think that means I have a lot of knives floating around.
- This isn't a superstition or a myth, it's good knife handling practice, always hand a knife back to someone the same way they handed it to you. In other words, if they hand you a closed pocketknife so you can cut a string or whatever, don't hand them an OPEN knife, close the knife and give it to them. Countless times people have asked me to borrow my knife because they know I always carrying a pocketknife, they'll cut what they need and hand me an open knife, blade first! Not only bad manners, but dangerous as well.
- In some parts of America, it is considered bad luck to sharpen a knife, or any blade, after dark.
- "My grandmother would never say "thank you" when she was given a plant as a gift or handed a knife. She believed that the plant would die; and she would cut herself, respectively. She would also never point her finger at a plant because it would then begin to wither and die. Also, to this day, opening an umbrella indoors is a BIG no-no in my family.
- When handing a knife to someone, do not open it. This will lead to a quarrel of sharp words.
- If it is open, lay it down and let them pick it up. Do not hand it over.

OKCA 37th Annual KNIFE SHOW **Cutlery Displays**

April 14 - 15 • Lane Events Center • Eugene, Oregon

1. Ron and Justin Carriveau (A07) **Butterfly Knives (balisongs)** **from around the World**

This display will show butterfly knives (balisongs) from around the world primarily from the United States & Philippines.



2. Michael Kyle (A08) **Remington Bullet Knives and Posters**

Since 1982 Remington has offered a handsome series of sporting knives with "Bullet" shields, along with annual art posters promoting these knives (most of them painted by San Francisco artist Larry W. Duke). Mike Kyle will present his large display of both the knives and the posters along the north wall. Also included in his display will be the original Remington reproduction knives by Bowen, along with Candy-stripe handled Remingtons. The centerpiece of the display is a large-size Remington R1128 Bullet Trapper that is 8 feet long open.



3. Barbara Kyle (A11) **Legends in Steel**

Barb will be displaying her collection of custom-made miniature knives, including new knives added since last year. She has been collecting minis for nearly two decades.

Included are knives made by Wayne Goddard, Jim Whitehead, Al Barton, Paul Wardian, and many other OKCA member-knifemakers.

4. Phil Bailey (A13) **Gerber's MkII Combat / Survival Knife**

This year Phil will present a favorite of the Vietnam war, The Gerber Mark II. From the first canted-blade models to variations in blade and handle, along with prototypes, the Mk II's history will be well represented. As someone once noted "They all look the same... Only a lot different".

5. Ted Fitzwater (A15) **Military Kukris**

New this year, Ted's display will feature military kukris over the last 120 years. The kukri is a curved Nepalese knife used both as a tool and as a weapon.



6. Louis Chow (A16) **The Loveless Subhilt Fighter**

The evolution of the Loveless subhilt fighter from 1954 to the present. On exhibit: the first fighter Loveless made for sale in 1954, early Delaware period subhilts (the precursors to the Big Bear bowie), an unique, early fighter that saw service in the 12th Cavalry, a special-

order Lawndale subhilt with a Brazillian hardwood handle, the actual crown-stag handle "Big Bear" subhilt made in 1969 that was pictured in the 1970 catalog, and contemporary Big Bear subhilts to include a unique example that was made in 2011, at the old Loveless shop, by Jim Merritt, Loveless' business partner of 30-plus years.

7. Stanley Chan (A18) **Custom Push Daggers**

The collection features unique representations of push daggers by notable contemporary knifemakers including: Moran, Cronk, Lile, D'Holder, Hardenbrook, Cooper, Gault, Hibben, Dan-D, Chappel, Bourne, Cheatham, D. Zaccagnino and others.

8. Kenneth Clifford (A19) **American Swords**

A new display this year, consisting of 4 Display Cases, with 4 swords in each case: 4 Militia Officer swords, 4 Helmet Pommel swords, 4 Eagle Pommel swords, & 4 Indian Princess swords. All Officers swords and pre Civil War.

9. Chuck Gollnick (A24) **The Balisong Underground Presents**

A rare exhibit of fine and historic collectible balisong-style knives from some of the world's top collections.

10. Rick Wagner (X02) **United States Naval Cutlasses From the Civil War**

Fighting Naval cutlasses in use by the United States Navy during the Civil War, from the Model 1841 Cutlass to the French influenced Model 1861.

11. Jim Pitblado (X07) **Variations of the Remington official boy scout knife and its advertising from 1922-1939**

Display of over 45 Official Remington Boy Scout utility knives and Official Remington Boy scout fixed blade knives. Displayed are a number of new additions to the collection as well as newly acquired Remington Scout Knife advertising materials and Remington Scout Counter Displays. Display also includes historical information on various patterns from 1921 thru 1939 and updated display labels. Check out the new, stag handled 1934 four blade scout, the pearl handled four blade scout, and the great 1926 red white and blue.



12. Jack Birky (X08) **Factory Made Miniatures**

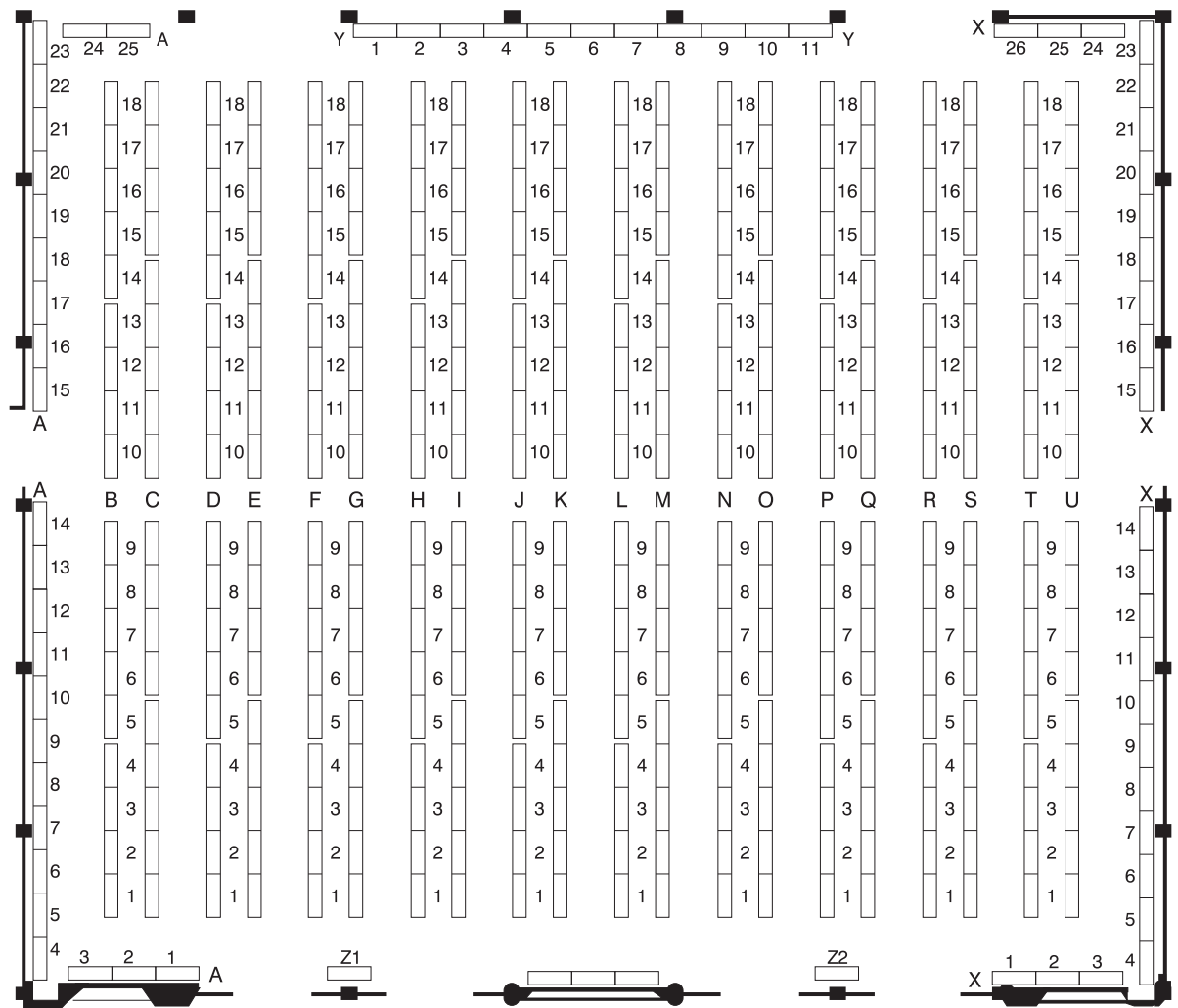
Miniatures of every sort, some very early, Every kind imaginable, some figurals, knives for all seasons! A nice small collection of small Scout knives with a nice selection of scales! Come to the Big Knife show and see them all... First time displayed !

Continued on Page 10



The 37th Annual Show

April 14-15, 2012
Lane Events Center



Company Table Holder Locations

5 ELEMENTS FORGE	T08	GIRAFFEBONE.COM	F10	ORIGINDIA	T15
AL MAR KNIVES	Y01	GLENDO CORPORATION	A21	PACIFIC RIM GALLERIES	D05
ALSTAR CUSTOM KNIVES	N18	GREAT EASTERN CUTLERY	M01	PHILLIPS ENTERPRISES	S13
BADGER BOOKS	N01	GRIFFIN MADE KNIVES	D04	PROVISION FORGE	Q10
BITTERROOT CUSTOM KNIFEWORKS	P03	HANDHELD STEEL	R14	QUALITY BLADE BOOKS	T01
BLUE RIDGE KNIVES	N09	HATT CUSTOM KNIVES	G05	QUALITY CUTLERY	P11
BRAD WATTS ENTERPRISES	E06	HAWTHORNE CUTLERY	F12	QUEEN CUTLERY CO	I01
BROTHERSVILLE KNIFE CO	Q12	HIGH PEAKS MARKETING	E16	RICK SORRELL CUSTOM KNIVES	G12
BRT BLADEWORKS	I13	HILARY INTERNATIONAL	E04	RIVER TRADERS	D18
BUCK COLLECTORS CLUB INC.	U13	HOG ABRASIVES	Y07	RIVER VALLEY KNIVES	S05
BUCK KNIVES	M04	IDAHO KNIFEWORKS	M17	RYAN W KNIVES	J16
CARTER CUTLERY COMPANY	P01	INHERIT TRADE LLC	Q15	S & B SUPPLY	F04
CENTRAL OREGON KNIVES	K11	IT'S A BURL	Y08	SCOUT KNIVES	D03
CHAI CUTLERY	T05	IVORY JACKS TRADING COMPANY	C06	SEVEY CUSTOM KNIFE	F07
CHRISTENSEN KNIFE & MFG LLC	H01	JANTZ SUPPLY	J18	SHADOW MOUNTAIN FORGE LLC	I06
COAST CUTLERY CO	A05	JONNY MAC KNIVES	J17	SHANDRAS BOOKS	D15
COMMON SENSE SELF DEFENSE	T04	K2A	K04	SHEPHERD HILLS CUTLERY	G10
CONKLIN MEADOWS FORGE	R05	KENCREST, USA	F17	SILVER CREEK OUTDOOR LLC	T14
CRESCENT KNIFE WORKS	U01	KNIFE WORLD	N02	SLIM'S CUSTOM KNIVES	N17
CUTCO CUTLERY	A01	M D CALDWELL & CO.	Q01	SPARTAN BLADES	I02
DAMASCUS KNIVES	R12	MCKENZIE RIVER DESIGN INC.	O17	SPYDERCO	F01
DAVID KURT HANDMADE KNIVES LLC.	I07	MUMBLY-PEG	L14	SWISS SHOP	A02
DER KNIVES	J02	nifeboy.com	I04	TACTICAL KNIVES MAGAZINE	C09
DOUBLE EAGLE KNIVES	O03	NOR CAL CUTLERY	E15	THREE SISTERS FORGE	J04
DRAGONFLY FORGE	M12	NORTH COAST KNIFE & FORGE SUPPLY	N14	TRIPLE "R" KNIVES	E09
EAGLE OUTFITTERS	K14	NORTHERN KNIVES	P12	TROY OZ	E10
EDGE-N-KNIFE	P17	NORTHWEST STABILIZED WOODS	G08	UNCLE PIMPYS AXE PALACE	J05
ELK CREEK CORPORATION	N05	NW KNIVES & COLLECTABLES	C11	VALLOTTON CUSTOM KNIVES	K09
ENTREK USA	J11	OCHS SHERWORX	D14	WALKER WAX	H16
EXCALIBUR CUTLERY	K03	OKUDEN	R07	WILD BOAR BLADES & LEATHER	R01
FINE TURNAGE PRODUCTIONS	F06	OLAMIC CUTLERY	Q16	WOODCRAFT FORGE	M11
GALLERY HARDWOODS	D07	OLDAWAN LLC	N16	WORKMAN OUTFITTERS	B13
GERRY'S KNIVES	O08	OREGON LEATHER COMPANY	Y03		



Individual Table Holder Locations

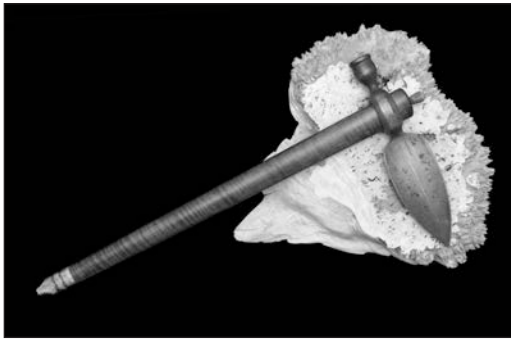
ADAMS, BILL K06	DAVIS, LARRY D07	KUNTZ, SCOTT Y07	RICHARDS, ALVIN (CHUCK) I09	TEMPLE, MIKE H13
ADAMS, WILLIAM C07	DAVIS, TERRY P09	KURT, DAVID I07	RIDER, DAVID O14	TENDICK, BEN I13
ADAMSON, MIKE U16	DEKORTE, GARY Q03	KYLE, MICHAEL B05	RIDGEWAY, RICH C15	THIBAUT, RAY P12
AGGERS, LARRY G13	DEWET, KOBUS D02	LAKE, RON D10	RIPPY, TERI E10	THOMAS, CARY H14
ALLEN, JAMES J04	DIAZ, JODY T05	LAMERRILL, DAVID N04	ROBINSON, ROY R14	THOMAS, GARETH Y03
ALVAREZ, JACK J10	DICK, STEVEN C09	LANDIS, MARK S14	ROCHA, GAY P04	THOMPSON, LEON K10
AMOUREUX, BILL N18	DOAN, FRANK Q06	LEE, SHERIDAN G04	RODENBERG, PHIL B01	TIPTON, RAYMOND G17
ANDERSON, DAVE U07	DODGE, DICK D05	LEVINE, BERNARD N01	ROTELLA, MARK F02	TOLLEFSON, RON S03
ANDRINGA, DONALD K13	DOERFLER, AMY K04	LISCH, DAVID G07	ROUSSEAU, JERRY S10	TOLMAN, HAL T17
BAILEY, PHIL B08	DOLLINGER, BRUCE U13	LITTLE, GARY R05	RUANA, DAVE J03	TOLSON, BEN G02
BAINBRIDGE, LYLE E16	DOUGE, STEPHEN R10	LITTMAN, GLORIA P05	RUANA, DONALD J02	TRIPP, KURT C06
BALL, MALCOLM I16	DOYLE, JOHN P03	LOY, MARV S08	RUIZ, TED P17	TURNAGE, CHARLES F06
BARNEY, TIM D13	DYSON, JOHN R09	LUFT, MICHAEL I14	SANDERS, LEO P13	TURNER, MIKE T09
BATEMAN, JAMES D15	DZIALO, TED L08	MAGRUDER, JASON J15	SAWYER, MICHAEL U10	TWITTY, JERRY B14
BAULDREE, TRAVIS Q08	ELLIS, DEAN H17	MANN, MIKE M17	SCHAECHNER, RICHARD D06	TYRE, MICHAEL K17
BEATY, ROBERT B18	ENGLERT, TODD L12	MANNING, AUDREY xx	SCHEMPP, ED T10	VALLOTTON, BUTCH K09
BELL, DON O12	ENNIS, RAY J11	MARTENSEN, BILL E15	SCHEMPP, MARTIN T11	VAUGHAN, DAN K12
BELL, MICHAEL M12	FADDIS, GARY Y01	MARTIN, GENE Q10	SCHICK, JIM I04	VINCENT, DALE O10
BERG, TONY H10	FARLEY, MARK Y08	MARTINDALE, JIM U06	SCHMIEDT, DAVE U18	WAGNER, BRIAN R07
BERGLAND, SALLY H09	FISHER, THEO J08	MARTINDALE, SR. GARY K08	SCHULTZ, DAVE B15	WAGNER, RICK T01
BERNING, RON Q07	FITZWATER, TED B10	MATHEWS, BRETT Q15	SETTANI, BOB Q09	WALKER, JAMES H16
BESS, MONTY P14	FRANK, BRAM T04	MATSKO, STEVE C14	SEVEY, JOHN F07	WARD, DAVID E14
BIRKY, JACK O01	FULLEN, JOHN B04	McCAFFERTY, DAN C18	SEYFERT, EMANUEL S06	WARREN, AL G15
BLOMBERG, JAMES I18	GAIL, R TERRY U09	MCCARGAR, JON J17	SILVEY, MIKE J14	WARREN, ALAN M18
BLOOM, KEN G08	GAMBLE, FRANK M10	McCLURE, JERRY F10	SIMONSON, RAY R01	WATTS, BRAD E06
BOEDCHER, BRUCE O15	GLASSER, ELLIOTT E04	MCDONALD, RON K11	SMITH, GREG J06	WEEKS, RYAN J16
BORACCA, BILL P07	GLESSER, SAL F01	MCKINNIS, RON xx	SMITH, ROD K15	WELLS, JIM E12
BOURLAND, SKIP C01	GODDARD, WAYNE N10	MILLER, PAUL L06	SMITH, RONALD O17	WHITMAN, HARLAN C04
BRAND, KEN G16	GOLDEN, ROBERT M13	MILLER, TODD S15	SOLOMONIK, EUGENE Q16	WILLIAMS, CHARLIE L17
BRANDT, MARTIN N14	GOLLNICK, CHUCK A24	MOELLER, HARALD F03	SONNTAG, CARL I08	WILSON, JIM L14
BRICE, MATTHEW S05	GOODMAN, JIM G01	MOORE, JENNIE I01	SORRELL, RICK G12	WILSON, PHIL L09
BROOKS, B.K. N03	GREEN, ARTHUR G03	MOORE, LYNN O13	SOUTHARD, MICHAEL A01	WILSON, R W R16
BROWN, JOHN T12	GRIFFIN, GARY D04	MOORE, SCOTT U03	SOUYER, MIKE R13	WOOD, BRYCE M11
BUCHANAN, THAD I03	GUINN, TOM U12	MORABITO, JOHN N06	STARR, GARY X04	WORLEY, ROGER F15
BUCHANAN, ZAC I03	HAILE, GREG P15	MURISON, JEFF S04	STEPHENS, CLAY Q05	YADAV, MANOJ T15
BUCK, CHUCK M04	HARSEY, BILL H03	MYERS, WAYNE O11	STRAUCH, STEPHEN L11	ZALESKY, MARK N02
BUCKNER, TOM D17	HATT, ROGER G05	NASH, BOB N16	STUCKY, DAN C03	ZIELINSKI, JAMES N07
BUDIL, BETTY O03	HAWK, GRANT N05	OCHS, ERIC D14	SWYHART, ART K16	ZVONEK, DANIEL L01
BUMP, BRUCE R12	HAWK, WALTER X12	OKAMURA, MIKE M08	TEETZ, WELDON B07	
BURTSCHER, BOB J12	HAYDEN, JIM M06	OLHAUSEN, STEVEN E02		
CALDWELL, MATTHEW Q01	HEIDLEBAUGH, JIM R15	OLIVER, DEAN D18		
CAMPAGNA, CHARLIE U02	HENDERSON, LARRY C17	OLSON, DARROLD "OLE" Q04		
CAREY, MARK I02	HENSON, SAM R06	OSTENSON, LON K02		
CARRIVEAU, RONALD B03	HERGERT, BOB X15	PAINE, CHARLIE R03		
CARTER, MURRAY P01	HERRINGTON, ARLEN H18	PALLAY, HAL U05		
CARTWRIGHT, JEFF H07	HILL, JOSH M09	PALMER, DENNIS N13		
CHAN, STANLEY A18	HILL, MIKE A05	PALUCH, MARK T03		
CHESTER, TERRY I17	HOLBROOK, ED X23	PANZER, DOUG G14		
CHICARILLI, LAURA O18	HOOVER, PHIL K18	PARMLEY, GERRY O08		
CHOW, LOUIS B11	HOSKINS, HOWARD L04	PATRICK, BOB U01		
CHRISTENSEN, BRYAN H01	HOUSE, CAMERON F09	PATTON, GORDON C10		
CLARK, ROGER D12	HUGHES, STEVE S12	PEERS, BUD S07		
CLARK, TOMMY N09	HUMENICK, ROY P09	PETTY, DAVID H15		
CLAUSSEN, WILLIAM C11	IRVIN, BILL T07	PFAHNING, DAN P11		
CLIFFORD, KENNETH B17	ISENBURG, HOLGER A02	PHILLIPS, KURT S13		
COCHRAN, FOY J07	ISOM, GUY I06	PITBLADO, JIM R02		
COLEMAN, FRED B06	IWAHARA, JEMMY F17	PLASS, GREG U08		
COLEMAN, JOHN A N17	JAMES, ROBERT Q14	PODMAJERSKY, DIETRICH P16		
CONOVER, JUANITA L10	JOHNSON, BARRY P08	PRIEST, JOHN J01		
COOK, CHARLES D03	JOHNSON, BILL F04	PRUYN, PETER Q12		
COOLEY, JOE D01	JOHNSON, HARRY E08	PURKERSON, JOEL G06		
COON, RAYMOND I12	JOHNSON, HERB F14	RAPPOPORT, DAVID F12		
COPE, DANNY H05	JOHNSON, KEITH R08	RAYNOR, DICK E13		
CRAIN, STEVEN F08	JOST, JOHN K03	READY, MICHAEL K14		
CRISWELL, ROB O07	KELLEY, GARY K01	REED, JESSE J05		
CROWNER, JEFF N12	KEMP, SHANNA J18	REID, ROD G10		
DANIELS, RYAN M01	KEYES, GEOFF T08	REINDEL, PAT T16		
DAVIDSON, CHARLIE B13	KLECKER, GLENN T14	REMER, LEROY E09		
DAVIS, JOHN E01	KNUTSON, LEROY A R04	RICHARD, RAYMOND H08		



13. Jordan Pallay (X09)

American Indian Tomahawks

This favorite display of the past returns under the supervision of Jordan Pallay. It features authentic Indian weapons owned and used by the original people inhabiting our country, before being overrun by land-hungry settlers. Visual history to be shared with the public.



14. R.Terry Gail (X13)

Case Stag Pocket Knives

Knives by W. R. Case & Sons of Bradford, Pennsylvania, have long topped the list of collector favorites. And the prettiest of all are the Case genuine

stags. Terry presents a dazzling display of these great looking knives, built up over the course of four decades. He points out that stag handled pocketknives are less common than bone or synthetics. Stag is a natural material, used only on premium examples of the cutler's art.

15. R.Terry Gail (X14)

Benchmade Knives

Technically advanced folding knives made by Oregon's own Benchmade knife company, using the most advanced state-of-the-art metal-working technology. Examples of current production knives, including pre-production examples and first-production marked knives. Benchmade's motto is "Held to a Higher Standard."

16. Tom & Gwen Guinn (X16)

Miniatures

Tom and Gwen will share their collection of hand-made miniature knives with us again this year. They have been collecting minis for twenty plus years now. They have functional miniature versions of full-sized knives, as well as original fantasy creations by some of the country's most recognized makers. Most of their knives are one of a kind, all are fully functional, and many have won awards for their makers. Most unusual are two miniature knife-pistols and a miniature sword-pistol--all being black powder guns. Two new displays have been added on either side of the center display in the last two years. The center display is changed routinely for every show, while the side displays grow, as new Yvon Vachon and Jim Whitehead pieces or antique miniatures are acquired. Makers take note: the Guinns are always interested in adding fine miniatures to their collection.



17. Bruce Dollinger (X17)

Buck Collectors Club

Bruce will display some of the original Handmade Knives from the Buck Custom Shop

18. Bill Feeny (X17)

Buck Collectors Club

Bill will display Buck Model 401's (Kalinga) and Model 402's (Akanoua).



19. Bill Willis (X17)

Buck Collectors Club

Bill will display his collection of Buck Model 186's - the Original Titanium Handled Knife. They will be selling Buck Knives and Buck Collectors Club Items, and signing up New Club Members at their Club table.

20. Mike Adamson (X19)

Kutmaster displays and ephemra - heyday of Kutmaster

Examples - Feed & Seed - Girl scout - Whittlers kit - Display catalog - Copper hand engraved printing blocks.

21. Dave & Lonna Schmiedt (X20)

Indonesian & Philippine Swords

David and Lonna will exhibit their collection of swords from Malaysia, Indonesia and the Philippines, including Moro swords, Nias Island swords and Borneo headhunter swords. These are some of the finest and most beautifully crafted edged weapons ever made. The forge work, the Damascus steel, the carving -- all are superb. The closer you look, the more amazed you will be.



22. Ed Holbrook (X23)

Scout Knives

Ed "wrote the book" on Scout knives, and he published an updated edition of *Official Scout Blades* in 2009. His display completely fills four tables and

includes excellent examples of just about all of the Official Scout knives ever made. Ed has been actively involved with the Boy Scouts of America since 1948; and he has collected Official Scout knives (Boy Scout, Girl Scout, and Campfire) since 1982. The rarest knives in his display are the Official knives from the 1910s through 1930s, including those by New York Knife Co., Remington, Ulster, L. F. & C., and Cattaraugus.

2010 was the 100th anniversary of the Boy Scouts. Ed's Display will include a Bowie Knife with all the scout founding fathers etched on the blade. Also a complete set of Old Timer and Uncle Henry knives by Schrade commemorating the 100th anniversary. For 2011 Ed added three display cases of Official Scout Case Knives.

Demonstrations, gatherings & educational seminars at the Show

The demonstrations on Saturday and Sunday will feature various aspects of the cutlery world. The seminars or demonstrations will vary from the educational to the entertaining.

Metallurgy is the heartbeat of the knifemaking world. This year we will have a presentation starting **Friday at 9 AM in meeting room #3.** This event is being prepared by **Bill Harsey (H03)** and will have the title "Steels of the Zombie Apocalypse." It will start with reference to the first known stone tools in North America (20,000 years before present), progressing to how many steels which weren't supposed to make knives but have made knives. It will finish with the state of the craft in steelmaking today. Bill will have backup from **Frank Cox** and his associate from Niagara Specialty Tools Steels. They are working on the middle part of this historical journey. Everyone is invited for this metallurgy journey. Entry is on the southwest corner of the building.



Murray Carter, Vernonia OR. "What North American customers are looking for in Japanese cutlery." Murray will give a detailed look into what has caused the massive trend towards fine Japanese cutlery for the Pros and home chefs over the past fifteen years. This comparison between Western and Eastern cutlery manufacturing approaches will educate and equip the audience to make informed decisions on their next kitchen cutlery purchase. **Saturday 10:00 AM. & Sunday 11:00 A.M. (Table P01)**

Lynn Moore - Fall Creek OR. Sharpening Of Knives. Lynn is passionate about knives. To be passionate about something is to know it, and therefore Lynn can share his sharpening skills for those who actually want to cut with your knives. When you are done with this seminar, you will understand how to sharpen a knife and what sharp is all about. Start time **Saturday 11:00 AM. (Table O13)**



David Rider will be heading up presentations on **Forging Knives.** **Martin Brandt** will also be in attendance. The actual forging will involve basic forging and the making of a steel knife, using the anvil. The hammer on the anvil is a great sound that will educate and mesmerize. It doesn't get better than this as far as demonstrating this art form. This event is so popular, we will be holding it twice. **12 NOON** on both **Saturday and Sunday.** Entry to this demonstration is through the doors at the southeast corner of the building. **David is at**

table O14 and Martin is at table N14.

George Snodgrass and Kerry Clark from RMA Martial Arts & Fitness. **Haganah Self-Defense System.** Israeli combatants will show their perspective on how to negate a knife attack with an edged weapon. The reason for their art and why many in Israel practice it is due to the

real world threat the small state faces every day around hostile neighbors. While walking on the streets of Israel, an attack can come from a make-shift edged weapon, not just a gun. This demonstration should prove most interesting. **Saturday 12 NOON and Sunday 1:00 PM.**

Butterfly/Balisong Tournament/Competition - For the first time ever, the OKCA will be taking their



balisong demonstrations to a whole new level. Members will be traveling from all across the United States to participate in the first annual OKCA balisong flipping tournament. The tournament will be held at **12:00 PM** on Saturday April 14 and will last approximately 2 - 3 hours.



Bram Frank, Ft Lauderdale FL, is a Grand Master in martial arts. His seminar will be an active demonstration using **Non-lethal Response with an Edged Tool and CRMPT tool** using his own system of martial arts as taught to Police and Military. **Ms. Sonia M Waring** will accompany Bram in this educational presentation. That presentation starts **Saturday at 1:00 PM.** While in Eugene, Bram will be putting on classes at a Best martial arts dojo: including a Friday Knife Show special. Talk to him to gain more information on this happening. **(Table T04)**

Edge-U-Cation on Kitchen Cutlery - Joshua Hill - Did you ever wonder what the proper use was for one of those knives in your kitchen? Joshua will teach you about kitchen cutlery and the correct knife for the correct job. There is nothing to sell here save for the education on something everyone has in their home. If there is a knife you have in the kitchen and you have curiosity about its form and function, bring it to Joshua. This seminar starts on **Saturday at 2 PM** and can be seen again on **Sunday at 12 noon. (Table M09)**

Martin Schempp, Ephrata WA, has been giving presentations on **Flint Knapping** at our Show for many years. He started demonstrating at our Show in 1998 at a very young age and has continued each year to share his talents on this 10,000 year old craft. His presentation begins at **3:00 PM. (Table T11)**



This year we will be having **blade grinding demonstrations/seminars** in lieu of the competitive grinding we have done in the past. **Gene Martin (Q10)** has put this event together. There will be three presentations which will be Saturday morning, Saturday afternoon and one presentation on Sunday. The presentations will be done by **Mike Turner (T09), Peter Pruyn (Q12) and Dave Lisch (G07).** Mike is a

farrier/bladesmith/knifemaker, Peter Pruyn, a bladesmith/knifemaker and Dave Lisch, an artist blacksmith/bladesmith/knifemaker. All three are noted for their quality and execution in knifemaking.

We will again have presentations on the very popular subjects of scrimshaw, wood carving and engraving.

Bob Hergert, Port Orford OR, is an artist who enjoys sharing his art skills with interested persons. He will be demonstrating his craft during the whole Show from his **Table at X15.**

We also will call your attention to **Dory Silva, Glide OR,** who will demonstrate her wood carving skills at **Table P04.**

Glendo Corporation will be showing engraving at **table A21.**

There are many people who come from far away but want to start their Sunday at a worship service. We have brought the Chapel to our knife show at **8:05 AM Sunday morning** in the meeting room at the south end of the building. **Howard Hoskins, Culdesac ID,** presides over this chapel service.



Display Award Knives

The blades that were ground at the April 2011 grinding competition were used to make up the awards for the displays for the April 2012 Show. The following are those that who have graciously finished these blanks to make the award knives.

- Bruce Bump - Walla Walla WA (R12)*
- Jeff Crowner - Cottage Grove OR (N12)*
- Jose Diaz - Ellensburg WA*
- Tedd Harris - Springville UT*
- Keith Johnson - Springfield OR (R08)*
- Geoff Keyes - Duvall WA (T08)*
- David Kurt - Eugene OR (I07)*
- Gene Martin - Williams OR (Q10)*
- Lynn Moore - Fall Creek OR (O13)*
- Peter Pruyn - Grants Pass OR (Q12)*
- Joel Purkerson - Lebanon OR (G06)*
- Mike Quesenberry - Blairsden CA*

- Jerry Whitmore - Yoncalla OR - engraving*
- Larry Criteser - Eugene OR - Event coordinator*



Jeff Crowner



José Diaz



Tedd Harris



David Kurt



Geoff Keyes



Peter Pruyn



Gene Martin

Switchblades and Daggers

State - Federal - Postal Knife Laws

STATE of OREGON KNIFE LAWS (part)

Oregon's state knife laws were revised in 1999. Here are key sections of the current laws. For links to the complete text, and for other U.S. state knife laws, visit www.knife-expert.com

166.240 Carrying of concealed weapons. (1) Except as provided in subsection (2) of this section, any person who carries concealed upon the person any knife having a blade that projects or swings into position by force of a spring or by centrifugal force, any dirk, dagger, ice pick, slungshot, metal knuckles, or any similar instrument by the use of which injury could be inflicted upon the person or property of any other person, commits a Class B misdemeanor.

(2) Nothing in subsection (1) of this section applies to any peace officer as defined in ORS 133.005, whose duty it is to serve process or make arrests. Justice courts have concurrent jurisdiction to try any person charged with violating any of the provisions of subsection (1) of this section. [Amended by 1977 c.454 s.1; 1985 c.543 s.2; 1989 c.839 s.21; 1999 c.1040 s.15]

[Note: The phrasing "swings into position... by centrifugal force" is often interpreted by judges to apply to any folding knife of which the blade can be "thrown" open while holding on to the handle, for example a balisong or butterfly knife, or a liner-lock knife with a loosely pivoted blade. In Multnomah County (Portland) and vicinity, this phrase is now often held to apply to ANY knife with a blade that folds, whether or not it can be opened quickly. Because the language of the statute is ambiguous, there is potential for similar interpretations anywhere in Oregon.]

166.270 Possession of weapons by certain felons. (1)... firearm... (2) Any person who has been convicted of a felony under the law of this state or any other state, or... under the laws of the Government of the United States, who owns or has in the person's possession or under the person's custody or control any instrument or weapon having a blade that projects or swings into position by force of a spring or by centrifugal force or any blackjack, slungshot, sandclub, sandbag, sap glove or metal knuckles, or who carries a dirk, dagger or stiletto, commits the crime of felon in possession of a restricted weapon...

Public Buildings, Including School Buildings [excerpts]

166.360 (5) "Weapon" means: (b) Any dirk, dagger, ice pick, slingshot, metal knuckles or any similar instrument or a knife other than an ordinary pocket knife, the use of which could inflict injury upon a person or property...

166.370 (1) Any person who intentionally possesses a loaded or unloaded firearm or any other instrument used as a dangerous weapon, while in or on a public building, shall upon conviction be guilty of a Class C felony.

FEDERAL KNIFE LAWS (part)

Federal - United States Code, TITLE 15 - COMMERCE AND TRADE, CHAPTER 29, Section 1242. Whoever knowingly introduces, or manufactures for introduction, into interstate commerce, or transports or distributes in interstate commerce, any switchblade knife, shall be fined not more than \$2,000 or imprisoned not more than five years, or both.

As used in this chapter -

(a) The term "interstate commerce" means commerce between any State, Territory, possession of the United States, or the District of Columbia, and any place outside thereof.

(b) The term "switchblade knife" means any knife having a blade which opens automatically -

(1) by hand pressure applied to a button or other device in the handle of the knife, or

(2) by operation of inertia, gravity, or both.

Exceptions... (3) the Armed Forces or any member or employee thereof acting in the performance of his duty... [Note: this exception does NOT exempt sales to members of the armed forces. It only exempts carry of issued or authorized knives across state lines by Armed Forces personnel while on active duty.]

Postal - United States Code, TITLE 18, PART I - CRIMES, CHAPTER 83, Section 1716. Injurious articles as nonmailable... [including] (g) All knives having a blade which opens automatically (1) by hand pressure applied to a button or other device in the handle of the knife, or (2) by operation of inertia, gravity, or both... (h) Any advertising, promotional, or sales matter which solicits or induces the mailing of anything declared nonmailable...

Show Schedule

The Oregon Knife Collectors

37th Annual Knife Show will be held at the Lane Events Center and Fairgrounds EXHIBIT HALL, 796 West 13th Avenue in Eugene Oregon.

This is the same location as the 2011 Show, 425 TABLES,

the Largest Knife Show in the World!!!

Friday, April 13, 10:00 AM - 7:00 PM: Exhibitor set up and members-only day. No exceptions. **AFTER 2:00 PM** new members may sign up at the door (\$20 individual, \$23 family). Membership renewals **AFTER 2:00PM**.

Saturday April 14, 8:00 AM - 5:00 PM: Open to the public. \$6.00 admission. Special two day pass also available. **9:30 AM** new member sign up at the Show. This year we will be having a special opening ceremonies presentation at 8 am. Demonstrations throughout the day.

5:00 PM Saturday Night Social - Awards Presentations and recognitions.

Sunday April 15, 9:00 AM - 3:00 PM: Open to the public. Forging demonstration 12:00 noon. Other demonstrations throughout the day. The Show is open until 3pm, and all tables will be full until this time.

City and County Regulations require that there be:

- ✓ No smoking within the Exhibit Hall at any time.
- ✓ No alcoholic beverages consumed within the Exhibit Hall during the public hours of the Show.

CONTRIBUTIONS

Many companies and individuals contribute knife-related items and financial support to the Oregon Knife Collectors Association Annual Show.

Raffle and door prize items are displayed prominently during the course of the Show. Door prizes are awarded by random drawing to the public who have paid Show admission. Tickets for the raffle are sold both to the public and to table-holders. Proceeds of the raffle help to underwrite the costs of the Show. Hundreds of prizes will be given out at the Show.

See the up-to-the minute list of raffle and door-prize contributors at: <http://www.oregonknifeclub.org>

The following is a list of the people and companies who have contributed to the OKCA.

**Donald Andringa • BBarfly bottle openers • Jerry Bodner
Boker USA • Browning • Bob Burtscher
Matthew CaldwellCarpenter Technology • Cas Hanwei
Bob Cassidy • Coast Cutlery • Fred Coleman
Columbia River Knife & Tool • Council Tool
Country Knives Inc - Brian Huegel • Crazy Crow
Rob Criswell • Terry Davis • Nathan Dewey
Diamond Machining Technolgy • Flexcut Carving Tools
Glass Fuzion • Grand Forest • Bob Hergert - Scrimshaw
Ka-Bar Knives • Kershaw • Knife World Publications
Kycocera • Leatherman Tool Group • Pro Tool Industries
Darrel Ralph • Ed Schempp • Seber Design Group
Sentry Solutions • Mike Silvey
Smoky Mountain Knife Works • SOG Specialty Knives
Spydercos • Tactical Knives
T Shirt Philosopher Jerry & Kay Whitmore
William Henry Studio • W.R. Case & Sons • Xikar**



OREGON KNIFE COLLECTORS ASSOCIATION

BOX 2091 • EUGENE, OR 97402

MEMBERSHIP APPLICATION

Name(s) _____

Mailing Address _____

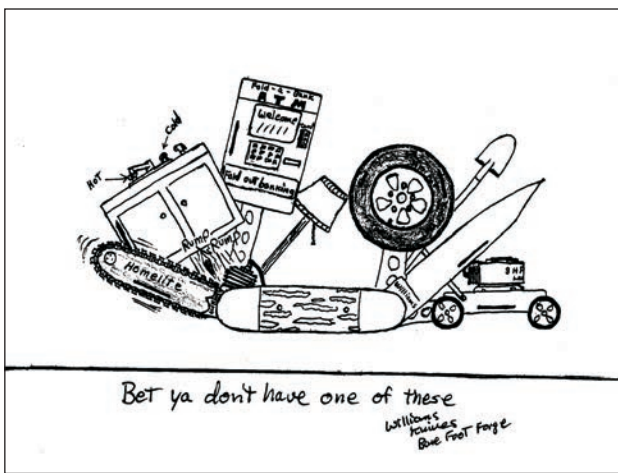
City _____ State _____ Zip _____

Phone: Eve (_____) _____ Day (_____) _____ Date _____

Collector Knifemaker Dealer Mfr./Distrib. Other _____ Email _____

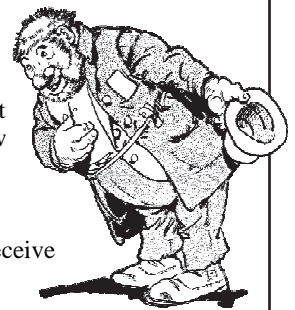
OKCA membership includes Knewsletter, dinner/swap meetings, free admission to OKCA shows, right to buy OKCA Club knife.

__ Start/__ Renew my/our OKCA membership (\$20 individual/\$23 family) \$ _____



About the OKCA

The Oregon Knife Collectors Association (organized in 1976) is a non-profit organization, happily involved with "Anything that goes Cut!" The OKCA Oregon Knife Show, with 425 8-foot exhibitor tables, is the largest all-knife organizational show east and west of the Mississippi River.



OKCA current members receive admission to the Friday "set-up" day at the Knife Show, nine *Knewsletters* per year, invitations to our popular no-host dinner meetings, right to have tables at our Winter Show in December and a chance to buy our annual limited-edition Club knives. Membership is open to all.

Dues are \$20/year (individual) or \$23/year (family under one roof). Come to the Club Table by the Show entrance after 2:00 PM Friday, or after 9:30 AM Saturday or Sunday, to sign up and get your membership card or mail your check to: OKCA, PO BOX 2091, EUGENE OR 97402.



Knife Show Etiquette

Knife Shows are a lot of fun. They are best, however, when visitors follow a few basic rules of courtesy. These are:

- ✓ Do not handle knives without permission.
- ✓ Do not touch the blade or the edge of any knife offered or displayed as a collector's item.
- ✓ Do not wipe off the blade of a knife. Let the exhibitor do it.
- ✓ Do not open more than one blade of a folding knife at a time.
- ✓ Do not block a sale table if you are only "window shopping."
- ✓ If you have brought knives to trade or sell, obtain permission before displaying them at or in front of someone's table.
- ✓ Please do not interrupt or comment on any transaction.



OKCA Club Whot-zits & Whos Zits

Darrold (Ole) Olson
President

John Priest
Vice President

Elayne Ellingsen
Sec/Tres.

Craig Morgan
Master at Arms

Dennis Ellingsen
Show Coordinator

Knewsletter by elayne & dennis

Web page --- <http://www.oregonknifeclub.org/>

Club email --- okca@oregonknifeclub.org

OKCA
PO BOX 2091
EUGENE OR 97402



Copyright (C) 2012 Oregon Knife Collectors Association. No part of this Knewsletter may be reproduced without permission of the OKCA. Email info@oregonknifeclub.org. Layout and printing by instaprint - 1208 W. 6th - Eugene, OR 97402

Hand-Made Knives

Knifemakers from all over the U.S., and from several foreign lands, come to the Oregon Knife Show. You can meet well-known makers and perhaps order that special custom-made knife you have always wanted. Prominent knife dealers are offering everything from classic knives by makers long gone, to the latest in high-tech and high-art cutlery from the U.S.A., Europe, Asia, Africa and Australia.

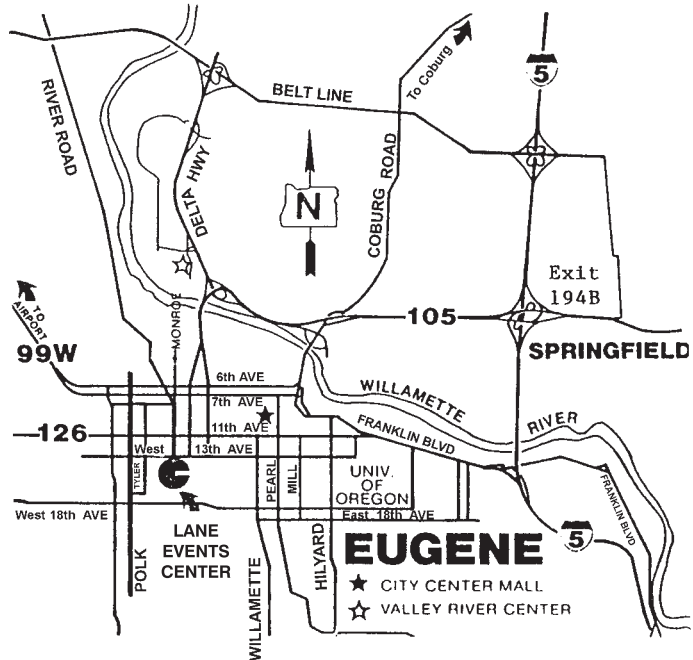


Hand-made knives range from solid practical hunting, fishing, kitchen and utility knives that are priced competitively with good factory knives--though with that one-of-a-kind hand-made touch--on up to exquisite, investment-grade, fine-art pieces suitable for the most discriminating collector.

The Northwest is an important center of bladesmithing, so be sure to note the wide variety of hand-forged cutlery offered here. Each forged blade was individually hammered-to-shape red hot by its smith or maker. Many have Damascus blades, built up of layered or braided steels of varying composition, then etched or specially polished to reveal the resulting pattern.

Another regional knifemaking specialty is traditional obsidian knapping, as practiced in Oregon in the Stone Age. Some modern obsidian knives are made for use, and they work as well as similar knives did 10,000 years ago. Others are fine art display pieces.

For the do-it-yourself knifemaker, don't miss the wide assortment of knifemaking supplies and guidebooks offered by several of our exhibitors.



DIRECTIONS TO THE LANE EVENTS CENTER

From I-5 take exit 194B. Stay on I-105 west until the end (it crosses over the Willamette River and then curves to the left). I-105 ends at 7th and Jefferson (when I-105 widens to three lanes, stay in the center lane to avoid being forced to turn). Proceed straight ahead, south on Jefferson, straight through the intersection at 13th & Jefferson, where you will enter the Lane Events Center and Fairgrounds: 796 W 13th Ave., Eugene, OR 97402, (541) 682-4292. The EXHIBIT HALL is at the south end of the large building on your right. The entrance is around on the west side. Parking is available on both sides. Check out our website for a Google map of our location.

Website

<http://www.oregonknifeclub.org>

Our website will surprise you with all the aspects of cutlery we have to show. We have included links to our members and the special articles from our *Knewslettter* that are educational and informative. All our *Knewslettters* are posted dating to April, 2001; and that is a pile of reading if you like knives. Questions about our Show can also be found on the FAQ page. The library of all our Club sponsored knives can be found here in addition to all the people who contribute to our Show; and when available, we provide links for these contributors. Want to know what the demonstrations will be at our Show? Go to our web page. Do a Google search on "OKCA," and our site should be the first one on the list. Let your fingers do the walking to our web page.



Non-Denominational Chapel Service

Sunday morning 8:05 AM
Meeting Room #4

Chaplain Howard Hoskins conducting
Welcome all friends to come and worship with fellow knife collectors. For information - Table L04.



The Knewslettter
Oregon Knife Collectors Association
PO Box 2091
Eugene, OR 97402

OKCA Cutlery Demonstrations

37th Annual Show - April 14 - 15, 2012

All the demonstrations will take place in Meeting Room #3 or #4 which are located to the right (South) of the Show Entrance. Demonstrations will start promptly at the specified times. These demonstrations are designed to be highly educational and entertaining and are presented to show the many facets of our interest in cutlery and cutting tools.

Friday

Metallurgy Seminar	9:00AM
--------------------	--------

Saturday

What's in a Kitchen Knife - Murray Carter (P01)	10:00
Sharpening of knives by Lynn Moore (O13)	11:00
Blade Grinding demonstration - Mike Turner (T09)	11:00
Forging a Knife - Dave Rider (O14) & Martin Brandt (N14) - Outside SE corner	12:00
Haganah Self Defense System - Israeli knife combat	12:00
Butterfly/Balisong tournament - Ethan Simpson	12:00
Non-lethal Response With an Edged Tool - Bram Frank (T04)	1:00
Edge-U-Cation on Kitchen Cutlery - Joshua Hill (M09)	2:00
Flint Knapping - Making Stone Tools - Martin Schempp (T11)	3:00
Blade Grinding demonstration - Peter Pruy (Q12)	3:00
The Art of Scrimshaw - Bob Hergert (At table X15)	All Day
Wood Carving - Dory Silva (At table P04)	All Day
Engraving by Glendo (At table A21)	All Day

Sunday

Sunday Morning Chapel Service - Howard Hoskins (L04)	8:05
What's in a Kitchen Knife - Murray Carter (P01)	11:00
Blade Grinding demonstration - David Lisch (G07)	11:00
Edge-U-Cation on Kitchen Cutlery - Joshua Hill (M09)	12:00
Forging a Knife - Dave Rider (O14) & Martin Brandt (N14) - Outside SE corner	12:00
Haganah Self Defense System - Israeli knife combat	1:00
The Art of Scrimshaw - Bob Hergert (At table X15)	All Day
Wood Carving - Dory Silva (At table P04)	All Day
Engraving by Glendo (At table A21)	All Day

The number & letter following each name is the Show table location.

